



Powering Aspirational India



Vision

At Reliance Foundation, our vision is to build an inclusive India by advancing a holistic model that addresses the country's diverse development challenges while contributing to its shared aspirations. At the heart of our philosophy lies a deep commitment to improving the quality of life for marginalised and vulnerable communities by empowering them and driving change through innovative, sustainable solutions. Through these efforts, we are turning grassroots aspirations into action — transforming hope into opportunity and potential into tangible progress.

Our unwavering focus is on developing replicable and scalable models of development through an integrated approach, in the true Reliance spirit of maximising societal value for all and transforming our work into a movement.



Isha Ambani



Dr. Tarang Gianchandani



Dhanraj Nathwani



B. Srinivasan

Driven by the core 'We Care' philosophy, Reliance Foundation is dedicated to creating transformative change across India through initiatives focused on a range of themes, from enhancing rural livelihoods and supporting lifelong education, from enabling women to empowering the aspirations of youth, strengthening India's sports presence and spotlighting our nation's rich arts and culture, caring for animals and stepping up for people during disasters.

9.69 Crore+
People reached cumulatively

769
Districts

98,000+
Villages

Introduction

Reliance continues to advance inclusive development through purpose-led CSR initiatives designed to address India's evolving social priorities. During the year, the Company's programmes created impact across multiple dimensions — from enabling sustainable rural livelihoods and expanding educational access, to nurturing sporting talent and elevating India's arts and cultural presence globally.

Implemented through Reliance Foundation, these initiatives are delivered in partnership with government institutions, technical agencies, knowledge partners, and non-profit organisations to ensure scale, depth, and long-term sustainability. To deepen impact and execution capability, the Foundation has

also built strategic alliances with specialised organisations possessing domain expertise and programme implementation experience across its priority areas.

Reliance Foundation's work spans key focus areas, including Rural Transformation, Health, Education, Sports for Development, Disaster Management, Women Empowerment, Arts, Culture & Heritage, Environment and Animal Welfare, and Urban Renewal, supported by strategic collaborations that strengthen execution.

The CSR efforts of the Company through Reliance Foundation have touched the lives of over 9.69 Crore people across India in more than 98,000 villages and several urban locations.

Partnerships Driving Collective Impact

Reliance Foundation's work is strengthened by a diverse network of over 930+ partners who bring local insight, technical expertise, and shared commitment to social change. These collaborations span key development areas including rural transformation (442 partners), education (299), health (95), and disaster management (36), alongside initiatives in art and culture, environment, sports, and women's empowerment. Built on trust, shared ownership, and a united vision for inclusive progress, this partnership ecosystem enables knowledge exchange, innovation, and collective action — helping extend the reach and impact of programmes across communities nationwide.

As of March 2026, the total number of people reached through various CSR programmes is as follows:

RURAL TRANSFORMATION

2.33 Crore+

HEALTH

1.61 Crore+

WOMEN EMPOWERED THROUGH LIVELIHOOD AND ENTREPRENEURIAL INITIATIVES

53.76 Lakh+

EDUCATION

58.25 Lakh+

OTHER INITIATIVES

59.30 Lakh+

SPORTS FOR DEVELOPMENT

2.33 Crore+

DISASTER MANAGEMENT*

2.08 Crore+

* This includes response towards Nepal Earthquake in 2015 (i.e. = 41,800)

Table of Contents

Rural Transformation

Enabling resilient rural communities through integrated livelihood programmes, digital access, and participatory development models that place local ownership at the centre of progress.

PG 4



Health

Expanding equitable healthcare delivery through strengthened medical infrastructure, telemedicine, mobile healthcare units, and focused preventive and primary health interventions.

PG 12



Education

Reimagining learning ecosystems through digital innovation, quality schooling, and inclusive education pathways for children and youth from rural and underserved communities.

PG 22



Disaster Management

Building preparedness and response capabilities through community training, rapid relief mobilisation, and long-term rehabilitation for disaster-affected populations.

PG 42



Women Empowerment

Fostering women's agency and financial independence through skilling initiatives, entrepreneurial training, and sustainable livelihood opportunities across rural and tribal geographies.

PG 47



Sports for Development

Leveraging sport as a vehicle for youth development by investing in coaching, infrastructure, and access platforms that nurture talent and promote life skills.

PG 53



Environment and Animal Welfare

Advancing animal care and environmental stewardship through rescue operations, rehabilitation services, livestock health support, and emergency response for animals during natural calamities.

PG 62



Arts, Culture and Heritage

Safeguarding India's cultural legacy by revitalising traditional art forms, supporting artisan communities, and creating sustainable pathways for craft preservation and global recognition.

PG 66



Other Initiatives

Driving collective impact through diverse social interventions — from education and inclusion to sustainability and humanitarian outreach — supported by widespread employee volunteering and national-scale relief efforts.

PG 72



Awards and Recognitions

Honouring initiatives that exemplify scale, innovation, and impact.

PG 76



Reporting Suite

Integrated Annual Report FY 2025-26

Business Responsibility & Sustainability Report FY 2025-26

Rural Transformation

Since its inception in 2010, Reliance Foundation's Rural Transformation Programme has been driving large-scale rural change through proven, demonstration-led solutions that help build resilient, self-reliant communities. The programme adopts an integrated approach to address climate and economic challenges by combining on-ground interventions with digital outreach to improve livelihoods.

UN SDGs



2.33 crore+

Lives touched in rural India**

** Since inception



The programme supports climate-resilient villages (CR4SD), enhancing incomes through better productivity, technology and value chain integration (IVCD), and promoting diversified livelihoods and women entrepreneurship (DRIWE). Working along with 34 field implementation partners and over 430 knowledge partners – including government and research institutions such as agricultural universities, Indian National Centre for Ocean Information Services (INCOIS), International Rice Research Institute (IRRI), National Bank for Agriculture and Rural Development (NABARD), Indian Council of Agricultural Research (ICAR), ICAR–Central Institute for Research on Goats (ICAR-CIRG), ICAR–Central Sheep and Wool Research Institute (ICAR-CSWRI) – the programme engages farmers, fisherfolk, livestock owners, women and youth, contributing to a Viksit, Aatmanirbhar Bharat.

Current Operational Geographical Coverage

155

Districts

15

States

1

Union Territory

62K+

Villages

Highlights of FY 2025-26

Digital & Advisory Outreach

- Over **27 Lakh** reached through single-screen WhatsApp creatives, delivering rapid, inclusive, low-data and locally relevant advisories

- **20** new WhatsApp advisory channels launched to expand reach and visibility of advisories among rural users
- **275** Digital Farm Schools continued across 15 states for 12 Kharif and Rabi crops
- Over **87,000** reached through 135 live YouTube sessions on farming practices, livestock management and schemes

44 Lakh+

Farmers reached through crop, weather, climate smart agriculture and risk advisories

Climate Resilience for Sustainable Development (CR4SD)

The Village Climate Resilience Index (VCRI) developed by Reliance Foundation was refined, externally validated by Dr. Rajendra Prasad Central Agricultural University, Pusa, Samastipur, Bihar confirming its robustness, reliability, and validity for pan-India applicability.

- **1,000+** activities across six states engaged 36,800 participants to prepare Village Climate Resilience Plans through a participatory planning process, adopting GIS-based resource mapping aligned with Gram Panchayat Development Plan (GPDP) priorities

- Over **149 Lakh** CuM additional water storage potential created through check dams, *holiya* structures, farm ponds, trenches, and desilting
- **2.3 Lakh+** saplings planted across 50+ villages in five states through plantation drives, complemented by initiatives like '*Ek Ped Maa Ke Naam*' and the Narmada scheme to improve soil health and land productivity
- **57** events organised on World Environment Day and World Ocean Day 2025 across 85 villages in eight states engaging **2,800+** people on afforestation, land restoration, and local action awareness
- **350+** Poshan Utsav activities organised across 10 states with Integrated Child Development Services Scheme, Gram Panchayats, and National Rural Livelihoods Mission, reaching **11.7K+** participants through awareness, demonstrations, traditional recipes, and recognition activities
- **15.2 Lakh** farmers and fishermen across 16 states received advisories on nutritious food choices

29 Lakh+

Reached through 190 climate adaptation actionable advisories

2,500+

Climate Champions skilled and nurtured to lead climate resilience action in their villages





Diversifying Rural Incomes and Women Entrepreneurship (DRIWE)

- Nearly **4,100+** SHGs, Producer Groups, and Village Organisations strengthened in alignment with the Government initiatives like Lakhpati Didi, mobilising ₹74 Crore+ from government and financial institutions for enterprise-led income growth
- 57,000+** individuals enabled to access essential services and entitlements through targeted last-mile delivery camps
- 31 Lakh+** users reached through digital literacy advisory and **32 Lakh+** reached through financial literacy advisories
- 120 Gram Panchayats** saw intensive interventions which strengthened Maharashtra State Government's Mukhyamantri Samruddha Panchayat Raj Abhiyan, resulting in economic resilience and improved service delivery
- 89,000+** animals treated through 306 livestock health camps across 13 states, strengthening smallholder livestock systems
- 12,000+** fisherfolk engaged through 440 capacity-building sessions across 43 districts in 10 states, focusing on safe fishing, seaweed cultivation, and fish pond management
- ₹77.24 Lakh** generated through fish sales from 222 community and individual ponds in Odisha and Madhya Pradesh, showcasing the impact of women-led scientific aquaculture

52,000+

Women and youth supported to diversify incomes through farm and non-farm activities and through entrepreneurship

70,500+

Women equipped with digital and financial literacy skills

Integrated Value Chain Development (IVCD)

- 1,000+** farmers adopted technologies introduced by Reliance Foundation – such as mechanised paddy transplanting in Odisha and the Dada Lad cotton technique in Maharashtra – improving yields while reducing costs and drudgery
- ₹67.5 Lakh** grant secured by Narmada FPC, Mandla with the support of the Foundation from the International Fund for Agricultural Development to strengthen the millets value chain, including marketing and seed systems
- 3,000+** cotton farmers benefitted from High Density cotton plantation practices promoted by Reliance Foundation; farmer Shri Boya Pedda Anjinaiah felicitated by Central

Institute of Cotton Research (CICR) for achieving the highest yield

- Reliance Foundation-mentored FPO — Amrutalayam FPC, Nanded — received Millionaire Farmer of India (MFOI) Award for its innovative localised seed production model
- 4 FPOs** – mentored by the Foundation – from Maharashtra, Odisha, Rajasthan, and Madhya Pradesh showcased nationally at the CII FPO Summit 2025 in Delhi, engaging with senior Ministry of Agriculture leadership

3,000+

Cotton farmers benefitted from high-density cotton plantation practices promoted by the Reliance Foundation



CASE STUDY

Women-led Livestock Enterprise in Odisha

In **Mayurbhanj, Odisha**, women farmers are strengthening rural livelihoods through the **Chheli Shakti Mahasangh**, a collective of **189 goat producer groups**. With improved livestock management and veterinary support, average herd sizes have grown to nine goats per household, significantly higher than the state average of five and national average of four.

To improve incomes, the collective also established a weekly point-of-sale-outlet, enabling producers to sell directly to buyers and secure better prices. The initiative highlights how women-led institutions, combined with market access and livestock development, can strengthen household incomes and rural economic resilience.

Key Updates of FY 2025-26

During FY 2025-26, the Rural Transformation (RT) Programme strengthened its **integrated approach to rural development**, aligning core thematic areas — Diversifying Rural Income and Women Entrepreneurship (DRIWE), Climate Resilience, Integrated Value Chain Development (IVCD), and Digital Engagement. By converging on-ground interventions with digital platforms and community institutions, the programme has enabled rural communities to access timely information, services, and livelihood opportunities in a more coordinated and effective manner.

A significant milestone was the **development and validation of the Village Climate Resilience Index (VCRI)**, a multi-dimensional framework assessing village-level climate readiness. Validated with **Dr. Rajendra Prasad Central Agricultural University, Pusa, Samastipur, Bihar**, and piloted across multiple states, the VCRI is facilitating **data-driven village climate planning**. It has guided the preparation of **Village Climate Resilience Plans aligned with Gram Panchayat Development Plans**,

while a network of **2,500+ Climate Champions** is leading grassroots adaptation in water, agriculture, and natural resource management.

Water remained a critical pillar of climate resilience. Investments in **water harvesting structures, groundwater recharge systems, and efficient irrigation practices** enhanced water security across villages, created decentralised storage capacity, and contributed to measurable groundwater recovery in several locations.

The programme also focused on **scaling grassroots innovations through end-to-end models**. Initiatives such as **high-density cotton cultivation, AI-enabled goatery livelihoods, and ethno-veterinary practices** strengthened climate-smart agriculture and livestock systems. **Women-led community nutrition models ensuring year-round household nutrition through diversified food sources**, alongside **non-farm enterprises such as artificial jewellery making**, expanded livelihood opportunities and strengthened household resilience.

On the digital front, **single-screen WhatsApp rich-text advisories** were introduced, designed for speed, low

data usage, and inclusivity. These locally contextualised advisories now reach **27 Lakh users across 15 states and 1 Union Territory**, reinforcing last-mile knowledge delivery.

The programme's impact received **institutional and community recognition**, including the **CII Award**, the Millionaire Farmer of India Award (Amrutalayam FPC, Nanded, Maharashtra), and acknowledgements from ICAR, Krishi Jagran, and partner institutions, affirming its role in building **resilient, self-reliant rural communities**.

Across the value chain, technologies introduced by the Foundation, mentoring by Farmer Producer Organisations, and policy engagement helped scale grassroots innovation beyond local pilots into models for nationwide adoption — reinforcing the catalytic role of the programme in rural transformation for a self-reliant India.

CASE STUDY

Poshan in Practice: A Community-led Nutrition Model in West Bengal

In Cyclone Amphan-affected villages of South 24 Parganas, West Bengal, nutrition is now embedded in daily life as a practice in self-reliance. Led by women, and supported by Reliance Foundation and Ramakrishna Mission Krishi Vigyan Kendra, communities in Kirorimohanpur, Baikanthapur, and Mathurapur village have revived bund vegetable cultivation, sharing the

know-how among neighbours, and crafting their path to food security.

Women like Pallirani have transformed their backyards into scientifically designed kitchen gardens, built seed banks, compost pits, and are using ICT-enabled QR guides for learning tools to strengthen local knowledge sharing. Over 100 women now grow diverse vegetables, ensuring year-round access to nutritious food and income from surplus produce. Protein access has expanded through mushroom cultivation and resilient poultry, enabled by community-built incubators and barter systems. Green gram farming

has also scaled from a pilot into a women-led seed enterprise generating ₹8 Lakh in sales.

Through peer learning and a community resource centre, this integrated model demonstrates how nutrition, livelihoods, and knowledge can be sustained by the community itself.

100+

Women cultivate green gram, mushrooms, poultry, and vegetables in their backyards, securing year-round nutritional diversity for their families

CASE STUDIES

Proof of Possibility: How a Kharif Watermelon Pilot Rewired Farming in Sindurmunda

In Sindurmunda village of **Balangir district, Odisha**, cotton had long been the dominant crop despite low and risky returns and a six-month lock-in period. When Reliance Foundation proposed Kharif watermelon, farmers were sceptical. They believed watermelon could not be grown in the Kharif season — perception, not agronomy, was the real barrier.

A structured pilot was launched with facilitation support from **Mahashakti Foundation, the implementation partner of Reliance Foundation** and market linkages through **Green Gudvella Farmers Producers Organisation**. Eighteen farmers cultivated watermelon across 10 acres.

The pilot delivered an average yield of 3.5 tonnes per acre, sold at ₹14 per kg, generating an average of **₹48,000 net income per acre within just three months** — offering faster and higher returns than cotton.

Farmers reinvested profits, reduced informal borrowing, and Sindurmunda

emerged as a model for crop diversification — demonstrating strong potential for replication across similar agro-climatic regions.

₹ 48,000

Net income per acre in just 3 months through Kharif watermelon in the Odisha village



Reliance Foundation's 'Water4Life' Campaign

Over 33,000 enthusiastic volunteers from across India, united by a common cause joined #Water4Life – a nationwide campaign initiated by Reliance Foundation in connection with World Water Day.

Aimed to be a continuous effort, the campaign will protect, restore, and sustain India's water ecosystems. Leading community volunteering efforts in over 1,400 waterbody locations across **912** villages, Reliance Foundation combined on-ground clean-up actions with long-term water governance and community ownership, engaging farmers, women's groups, youth, local institutions, Reliance employee volunteers, healthcare providers and more.

The #Water4Life campaign builds on years of Reliance Foundation's Rural Transformation work across 91,000+ villages, where water has long supported rural livelihoods. Till date, Reliance Foundation's water conservation has resulted in harvesting 2,000+ Lakh cubic metres of water, enriching millions of lives in rural India. The campaign aims to be a long-term, participatory movement contributing to national water security.

#Water4Life included pre-Water Day awareness actions with participatory engagement of government structures and local institutions with an easy to replicate approach, including community mobilisation, volunteerism, awareness on waste reduction and water literacy.

Over the past few days, volunteers have removed plastic and solid waste, with segregation and safe disposal, restoring inlet and outlet channels to improve water flow. They also enabled collective action for soil and water conservation in collaboration with local institutions and government.

Across **108** districts in **15 states and 1 Union Territory**, over 85,000 kg of waste was collected. Some prominent locations that were part of the efforts over the past few days include the Narmada river ghats, Dipeswar Talab in the heart of Pratapgarh, Kulbehra tributary of the Godavari basin, the Kochi Beach, Rankala Lake and more.

People from all walks of life came together. In southern Kerala, for instance, fishing communities and municipal sanitation workers helped clean the historic Kochi Beach in Ernakulam district. In Belagavi, Karnataka, school children came together to demonstrate early

ownership of water conservation while, in Sangli, Maharashtra, health workers initiated cleaning the ghats of the Swami Samarth stream, a tributary of the Krishna River.

A key role is being played by 2,500 Village Climate Champions, trained by Reliance Foundation to spread awareness and encourage local action on water and waste management. Moving ahead, this community-driven movement aims to ensure that water bodies are cared for, protected and restored in the long term.

33,000+

Community volunteers clean 1,400+ waterbodies since launch



Technology and Innovation Impact

Genetic Improvement of Farm Animals

The **Sex-Sorted Semen Artificial Insemination (SSS-AI)** initiative, promoted by Reliance Foundation, is aimed at the genetic improvement of dairy animals, boosting female calf births, milk productivity, and farmer incomes. Since 2023, 2,415 SSS-AI initiatives have been conducted across Gujarat and Rajasthan, demonstrating rapid adoption, scaling, and support for sustainable, dairy-based livelihoods.

Reviving Traditional Knowledge in Veterinary Care

The **Ethno-Veterinary Community Outreach** initiative is aimed at institutionalising traditional livestock care practices across Odisha, Maharashtra, and Gujarat. Through trained community cadres, the initiative has reached 6,160 goat-rearing stakeholders, strengthening last-mile animal healthcare. By leveraging ethnoveterinary knowledge, the programme promotes low-cost, locally relevant preventive and curative practices, enhancing community capacity and supporting sustainable, climate-resilient livestock management.



Reliance Foundation Platforms & Apps (Information Services)

A Unified Digital Public Infrastructure for Inclusive Development
Reliance Foundation Platforms & Applications (Information Services) operate as a scalable digital public

infrastructure anchored in the Web Knowledge Management System Plus (**WebKMS+**). This governed backbone integrates Information and Communication Technology (ICT) platforms, Geographic Information Systems (GIS), Geo-Artificial Intelligence (Geo-AI), remote sensing, multilingual outreach channels and structured feedback systems within one operational architecture.

Inclusive last-mile communication is delivered through Interactive Voice Response System (**IVRS**), **WhatsApp**, **SMS**, Voice Message Service (**VMS**), Low-Code No-Code (**LCNC**) workflows, **Internet Radio**, and mobile applications. This integrated system supports agriculture, livestock, fisheries, climate resilience and disaster response within a single accountable framework.

Operational scale is demonstrated through high-volume, multi-state WhatsApp and voice outreach, supported by standardised reporting and server-side call logs to ensure measurable reach and accountability. Reliance Foundation Information Services YouTube channels across 10 languages have crossed **39 Lakh+ views**, while outbound call systems have engaged **42.5 Lakh+ individuals**, reflecting data-driven development outreach.

Real-time dashboards track disaster response, population projections, and Anganwadi vulnerability layers while the **Pan-India Livestock Disease Risk Mapping platform** strengthens early preparedness. The **Machli app** integrates Indian National Centre for Ocean Information Services (INCOIS) advisories with navigation and safety features, supporting secure and informed marine livelihoods.

AI-enabled Knowledge and Predictive Intelligence

The advisory ecosystem converts scientific datasets, hazard indices, satellite imagery and field insights into localised, decision-ready guidance through governed workflows within WebKMS+. Secure **Application Programming Interfaces (APIs)** from the India Meteorological

Department (IMD) and INCOIS integrate time-stamped and geo-tagged data directly into dissemination systems, ensuring validated and synchronised advisories. AI-enabled tools process queries received through voice bots and WhatsApp, escalate complex cases to human experts, and support multilingual communication and computer vision-driven crop diagnostics.

The system operates as a closed intelligence loop linking dissemination, feedback and analytics. **Event-triggered Rapid Assessments** capture post-event farmer actions, while structured pilots track shifts in sowing, irrigation and crop protection practices. Automated multilingual web intelligence, **Natural Language Processing (NLP)-based geo-location extraction**, and **Microsoft Power BI dashboards** transform response patterns into institutional learning.

AI-enabled foresight and geo-intelligence together strengthen anticipatory development systems, shifting programmes from reactive delivery towards early action, risk preparedness and resilience-led planning. The **IMD Tech Survey Pilot** further strengthened institutional collaboration by generating structured behavioural evidence on advisory adoption across regions, reinforcing co-created, data-backed weather intelligence for anticipatory action.

Climate, Marine and Disaster Intelligence for Early Action

Reliance Foundation strengthened operational geo-intelligence and early warning systems through integrated dashboards, structured geodatabases and continuous data validation across response states. Real-time flood dashboards aligned to revenue-village boundaries, multi-hazard portals and **Index for Risk Management-based risk layers** combine hazard, exposure and coping capacity into live decision-support tools. Long-term rainfall analysis, return period modelling, and rainfall threshold-based landslide prediction

further support anticipatory governance by integrating with hazard zone datasets.

Marine intelligence integrates INCOIS Potential Fishing Zone (PFZ) and Ocean State Forecast (OSF) feeds within the Machli app and WebKMS+, supported by field validation and feedback. Ten-language access, **GPS-based landing centre mapping, tide intelligence** and **safety alerts** provide fisherfolk with a combined risk-plus-livelihood navigation interface. Automated disaster intelligence repositories track crop pests, livestock diseases and rural shocks, enabling faster preparedness and coordinated institutional response.

Inclusive Multichannel Access and Community-centred Learning

Reliance Foundation strengthened inclusive, voice-first communication through an integrated audio-video-chat continuum spanning IVRS, WhatsApp, VMS, SMS, Internet Radio, mobile applications and live video platforms. Designed for low-connectivity environments and diverse literacy levels, these channels deliver multilingual, region-specific advisories and alerts on cyclones, floods and livelihoods alerts across states with measurable reach discipline. A **WebKMS+-integrated WhatsApp chatbot** and low-bandwidth **multilingual platforms** ensure personalised, household-level guidance for farmers, women, youth and frontline workers.

Community learning was further strengthened through the modernisation of **Community Radio** in collaboration with the Commonwealth Educational Media Centre for Asia (CEMCA) and the Community Radio Association. Smartphone-based recording, secure cloud archiving, AI-assisted transcription, Internet Radio streaming and IVRS-based listener engagement enhanced accessibility and reach. Feedback from field teams, fisherfolk and farmers through Focus Group Discussions (FGDs) helped refine content, usability, and safety features, ensuring the system remained responsive, trusted and community-driven.



Strategic Forums and Ecosystem Engagement

Strategic forums and academic engagements strengthened the positioning of **Platforms & Applications (Information Services)** as a globally relevant **Digital Public Infrastructure** delivering predictive intelligence and inclusive support at scale. **Digital Inclusion Summits** presented the architecture as decision-grade intelligence, enhancing livelihood safety and resilience, while reinforcing IVRS, WhatsApp and Internet Radio as scalable pathways for digital inclusion. Partnership with **Jio Institute** advanced knowledge graph thinking, AI workflow design and domain-aligned predictive intelligence models within the Tech for Social Good ecosystem.

Global partnerships also deepened knowledge exchange and learning. **The Commonwealth of Learning (COL)** and **CEMCA Lifelong Learning for Farmers blueprint** advanced credit-linked, practice-based learning supported by structured feedback systems. Engagements at the **Sustainable Trade Summit (SUTRA)** and **Singapore University of Social Sciences (SUSS)** highlighted the Four-Linkage Method and demonstrated the platforms as **Digital Public Goods in action**. These collaborations strengthened rule-based advisory discipline and human-in-the-loop validation across the ecosystem.

Other Rural Transformation Initiatives Across Locations

Reliance CBM's CSR initiatives in Shahdol focus on strengthening rural livelihoods by enhancing farm incomes, advancing sustainable practices,

and empowering local communities. Through improved farming methods, input assistance, and diversified income avenues, the programmes have driven higher productivity, optimised costs, and fostered long-term economic resilience among farmers.

Shahdol Transforming Agriculture through Innovation

Comprehensive farm-based interventions strengthened livelihood resilience across the project region (Shahdol, Kotma, SHPPL), with more than 12,000 farming households receiving integrated agricultural support, resulting in sustained income growth for over 8,500 households. Productivity gains were driven through the adoption of improved cultivation practices, such as the System of Rice Intensification (SRI) by 2,056 farmers across 1,990+ acres in Shahdol and Kotma, leading to improved paddy yields and water-use efficiency. Additionally, 194 farmers adopted the System of Pulse Intensification (SPI) across 75+ acres, enhancing pulse productivity and profitability.

70% Farming households saw sustained income growth from the adoption of improved agricultural practices from Reliance CBM CSR



Enhancing Water Access and Irrigation Sustainability

Reliance CBM CSR continues to strengthen water security by improving access to clean drinking water while ensuring sustainable irrigation and groundwater availability. Households in 98 villages associated with the CSR Shahdol team are benefitting from various water security initiatives. Repair and installation of 113 hand pumps and submersible pumps benefitted over 1,678 households.

Community-led water harvesting initiatives resulted in the construction of 149 low-cost Bori Bandhan structures, creating a water harvesting capacity of 8.64 Lakh CuM. These structures support irrigation of 556 acres, benefitting 1,492 farmers and ensuring water availability for livestock during dry periods. Additional storage capacity of 6.57 Lakh CuM was created through pond deepening and revival of traditional water structures, benefitting 817 acres of farmland.

98 Villages in Shahdol are benefitting from various water security initiatives

Diversifying Income through Agroforestry & Horticulture

To promote income diversification and environmental sustainability, 22,907 saplings were planted on private and community lands, benefitting 1,478 households. A total of 43 orchards were developed on the land of select farmers, serving as long-term income-generation models. Household nutrition and food security were strengthened through the establishment of 6,214 nutrition gardens, providing year-round access to fresh vegetables for marginalised families.

Promoting Organic Farming & Soil Health

Sustainable agricultural practices were further promoted through the establishment of 4,483 bio-compost units, reducing dependency on chemical inputs while improving soil health and crop productivity. In collaboration with Krishi Vigyan Kendra and the Department of Agriculture, demonstration farms were established across 180+ acres to showcase improved inputs and advanced farming techniques.

Expanding Livelihood Opportunities Beyond Farming

Livelihood diversification initiatives strengthened allied farm sectors across project locations – for example, veterinary health camps supported 1,500+ households, treating and vaccinating 10,459 animals. Fisheries interventions enabled 663 households to adopt fish



rearing following the distribution of fish fingerlings.

Small ruminant livelihoods were strengthened through vaccination and de-worming of 10,500+ goats across 46 villages, benefitting 1,533 rearers. Capacity building efforts reached 3,374 farmers and CSR field cadres through training and agricultural fairs conducted in collaboration with Krishi Vigyan Kendras (KVKs) and Agricultural Technology Management Agency (ATMA), focusing on crop management, natural farming, and organic practices.

1,500+ Households in Shahdol supported through veterinary health camps

1,533 Goat-rearers in Shahdol supported in 46 villages through vaccination and de-worming

Nagothane

- A community water source cleaning and conservation drive conducted across **10 villages**, engaged 98 women and local residents. The programme focused on cleaning wells, tanks, and streams while building awareness on sustainable water use through collective action
- A one-day Water Conservation Awareness Programme under 'Let Us Celebrate Water Fortnight' engaged **687** participants (656 students, 31 teachers & staff) at a Zilla Parishad School and **15** surrounding schools, promoting responsible water use through pledge-taking and sensitisation activities, and encouraging students to act as

conservation champions within their communities

- World Environment Day 2025 activities across **13 villages** included tree plantation, kitchen garden seed distribution, cleanliness drives, and SHG-led awareness sessions under the Unnati Mahila Evam Vikas Abhiyan (Maharashtra State Rural Livelihoods Mission) initiative, engaging 122 participants and reaching **672 women** through digital outreach, strengthening environmental responsibility and sustainable practices

Jhajjar (MET City)

- On World Environment Day, 3,000 saplings were planted across Dadri Toye and Sondhi with community participation, complementing the Oxygen Park at Dadri Toye — enhancing air quality, biodiversity, climate resilience, and community recreation while promoting environmental awareness
- Community engagement initiatives under the relationship-building theme were conducted across MET villages, with 3,000 residents participating in CSR programmes

Barabanki

- A community-led initiative was undertaken to promote sustainable water management through pond cleaning, awareness sessions on water conservation, and collective participation with the Gram Panchayat, leading to improved hygiene of local water sources and strengthened community ownership
- In partnership with the Gram Panchayat, a village pond was formally adopted in alignment with Uttar Pradesh Ground Water Department (UPGWD) guidelines to support natural groundwater recharge, resulting in enhanced groundwater levels and encouragement of responsible water-use practices

3,000 Saplings planted across Dadri Toye and Sondhi in Jhajjar (MET), Haryana with the participation of villagers

Health

Across India, Reliance Foundation advances a comprehensive approach to healthcare that places communities and equity at the centre. Guided by the vision of 'Health for All' and Reliance's 'We Care' philosophy, its initiatives focus on expanding access to quality care, strengthening health systems and supporting healthier lives. From last-mile outreach and community health programmes to improved medical infrastructure and advanced tertiary care, these efforts contribute to a stronger and more inclusive healthcare landscape for the nation.

UN SDGs



1.61 crore+

Individuals reached since inception

4.22 Lakh

Families and 16.44 Lakh individuals reached through Sir H.N. Reliance Foundation Hospital over 11 years



Sir H.N. Reliance Foundation Hospital: Elevating Healthcare through Innovation and Compassion

The Sir H.N. Reliance Foundation Hospital's Health Outreach Programme delivers equitable primary and preventive healthcare to underserved urban communities across Mumbai and Navi Mumbai. Operating across 165 locations, the programme provides free screenings, consultations, medicines, telemedicine, health education, and referrals. Over 13 years, the programme has reached 4.22 Lakh families, integrating technology, community partnerships, and specialist care to strengthen early detection, disease management, and social protection.

Between April and December 2025, the hospital's Health Outreach team helped reduce the financial burden for underserved urban communities, enabling ~₹5.58 Crore in financial relief for patients and families. Support was delivered through teleconsultations, specialist consultations, referrals, and surgeries, along with assistance in diagnostics and investigations. This included ₹81.75 Lakh in treatment-related support along with ₹73.42 Lakh in diagnostics and investigation assistance. The lung cancer referral programme alone contributed ₹63 Lakh in financial relief, ensuring patients could access specialised care without delaying treatment due to financial challenges.

Under the Reliance Foundation Charity Cell, 484 patients received treatment support during FY 2025-26 (up to January 2026), reaffirming our commitment to making advanced healthcare accessible to all. This included 254 indigent patients who received critical treatment support amounting to ₹6.80 Crore, and 230 patients from economically weaker sections who accessed concessional

care valued at ₹5.50 Crore, amounting to a total of over ₹12.30 Crore in charitable financial relief.

Beyond monetary assistance, the programme enabled access to complex tertiary care. A total of 276 major surgeries were performed under charitable care, including 104 paediatric heart surgeries, 12 cochlear implants, 14 knee replacements, 21 medical oncology treatments, 68 surgical oncology procedures, and 13 spine surgeries. Furthermore, the hospital successfully completed 7 transplant procedures comprising 3 liver transplants, 1 renal transplant, 2 heart transplants and 1 bone marrow transplant, each offering patients a renewed chance at life.

₹ 5.58 crore

Financial relief provided by the Hospital Outreach team in FY 2025-26

₹ 12.30 crore+

Charitable financial relief made accessible to 484 patients under Reliance Foundation Charity Cell (till January 2026)

104

Paediatric surgeries conducted

276

Major surgeries performed under charitable care during FY 2025-26



Highlights of FY 2025-26

The Health Outreach Programme achieved significant impact across multiple areas of healthcare. Over 1.12 Lakh individuals were screened, with 60,000+ newly registered families. Anaemia screening was carried out for over 1.1 Lakh people, mainly women and children, while over 1 Lakh individuals were screened for non-communicable diseases such as diabetes and hypertension.

Trend Observations (Planned Surveillance vs Actual Trends)

- Hypertensive treatment coverage increased from 11% (2017) to 16% (2025-26), reflecting improved access to care; 18% of individuals tested for blood pressure for the first time were found to be hypertensive, significantly lower than 34% prevalence reported in India's urban population (NFHS-V)
- Coverage for diabetes patients rose from 6% (2017) to 13% (2025-26); 14% of individuals tested for blood sugar for the first time were found to be in the diabetic range comparable to the prevalence reported in urban India (14%, NFHS-V)

During the year, maternal and child health services supported over 59,000 women of reproductive age and more than 24,950 children.

Geriatric care reached 36,420+ elderly individuals with continuous support. The geriatric cataract programme restored vision for over 400 elderly individuals through successful surgeries, thus greatly improving their quality of life.

Cancer screening was strengthened through AI-enabled tools, covering over 65,000 people. As part of this effort, more than 24,000 women underwent breast and cervical cancer screening, with more than 60 high-risk cases receiving diagnostic support, and over 1,100 individuals screened for lung cancer.

In non-communicable disease management, more than 1.34 Lakh people were screened for diabetes and 1.48+ Lakh for hypertension, with 22,953+ diabetic and 17,760+ hypertensive patients receiving treatment. Control rates were encouraging, with 67% of diabetic and 56% of hypertensive patients achieving stability, surpassing national averages.

Anaemia screening was conducted for 1.10 Lakh individuals, with 49% found to be anaemic, 54% receiving treatment, and 32% achieving cure.

Child nutrition screening covered more than 5,272 children, of whom 577 were found to be malnourished; 11% of them recovered through follow-up care.

1.12 Lakh

Individuals screened through the Health Outreach Programme

1.34 Lakh

Individuals screened for diabetes

10 Year Health Seva Plan

The 10-Year Health Seva Plan, launched in October 2025 to mark a decade of Sir H. N. Reliance Foundation Hospital, reflects a strong commitment to women's and children's health. The plan set ambitious targets, including cancer screening for over 50,000 women aged 16-60 years, HPV vaccination for more than 10,000 adolescent girls, and paediatric cardiac care for 50,000+ children with congenital heart disease.

By mid-February 2026, more than 37,915 women had been screened for cancer, reaching about 76% of the target, with 60 high-risk women identified and provided free advanced care at the hospital. The HPV vaccination programme also met its goal, with over 10,000 girls fully vaccinated in Mumbai and Jamnagar. Paediatric cardiac screening also met its target, with more than 50,000 children screened, 56 high-risk cases being diagnosed and treated at the hospital.

Under the second phase of the plan, 601 patients were supported through comprehensive medical and surgical interventions, with an overall financial assistance of ₹11.82 Crore, easing treatment cost for families. The support enabled 99 chemotherapy sessions, 46 joint replacement surgeries, 39 Orthopaedic Arthroscopy procedures addressing complex joint conditions. Additionally, 29 Endovenous Laser Ablation procedures were performed to treat vascular disorders, and 287 patients benefitted from Cataract camps, helping restore clear vision and improve quality of life.

The initiative also supported 45 other major surgical procedures across specialties and facilitated 56 paediatric cardiac surgeries and procedures (10-year-old), offering children with congenital heart conditions a better future. Collectively, these efforts under the Health Seva Plan reflect a sustained commitment to delivering accessible, high-quality healthcare while providing meaningful financial relief to those in need.

₹ 11.82 Crore

Financial assistance provided to 601 patients through 10 Year Health Seva Plan

37,915

Women screened for cancer

50,000

Children underwent cardiac screening

Key Updates of FY 2025-26

During FY 2025-26, the Sir H. N. Reliance Foundation Hospital Health Outreach Programme accelerated efforts to strengthen preventive, primary, and specialist healthcare for low income communities. The programme expanded community engagement through national and global health observances such as World Health Day, World Hypertension Day, Poshan Maah, World Diabetes Day, and World Cancer Day.

During the year, large scale **AI-enabled community cancer screening** was conducted in partnership with Karkinos Healthcare, followed by screening for cervical and breast cancer. Over the past three years, the programme has reached **4.05 Lakh+ individuals**, enabling early identification of breast, cervical, oral, lung, prostate, and colorectal cancers. Enhanced capacity building partnerships with Tata Institute of Social Sciences (TISS), Indian Institute of Public Health, Gandhinagar (IIPHG), National Institute

of Public Health Training and Research (NIPHTR), Manipal Academy of Higher Education (MAHE), and international universities strengthened public health leadership among students and community workers.

Data-driven interventions were deepened through new research studies focusing on HPV vaccination, menopause, anaemia, and treatment adherence. A research paper evaluating quality of life among beneficiaries has been submitted for publication, reflecting the programme's evolving contribution to public health evidence.

Telemedicine continued to bridge access gaps for patients facing mobility or financial constraints. With **1,483 teleconsultations**, beneficiaries accessed specialist care remotely, reducing delays and unnecessary out of pocket expenditure. The programme facilitated **2,716 PMJAY registrations**, linking vulnerable families to cashless tertiary treatment.

9,000+

Individuals reached with awareness, behaviour counselling and targeted screenings

2,716

Registrations enabled under PMJAY

Healthcare Awards & Achievements in 2025

- IHW Council CSR Health Impact Awards – Gold Award for CSR Women & Child Health Project
- IHW Council CSR Health Impact Awards – Gold Award for CSR Primary Healthcare Project of the Year

CASE STUDIES

A Second Chance through Timely Care

At 26, Aniruddha Chandravanshi faced a life-threatening battle with Budd-Chiari Syndrome, a rare liver disorder that left him struggling with persistent jaundice, abdominal swelling and repeated hospitalisations. Despite undergoing a complex shunt procedure in 2024, his condition worsened when the shunt failed, leading to liver failure.

A living donor liver transplant became his only hope of survival.

For Aniruddha and his family, the cost of transplantation was overwhelming. At this critical moment, the Sir H.N. Reliance Foundation Hospital Charity Cell stepped in with timely financial support, ensuring treatment could proceed without delay.

On October 31, 2025, Aniruddha underwent a successful liver transplant

performed by Dr. Gaurav Gupta and his team. In a remarkable act of love, his sister donated a portion of her liver. Following careful recovery and monitoring, Aniruddha was discharged in stable condition. Today, he continues regular follow-ups — his journey standing as a powerful testament to compassionate care, medical expertise and the life-saving impact of charitable support.

A Little Heart's Big Challenge

Tabassum Bano Sheikh, a 1.3-year-old from Chembur, Mumbai, had been struggling since birth — persistent pneumonia, breathlessness, and repeated infections that left her family worried and exhausted. Her parents travelled across cities, from Lucknow to Mumbai, searching for answers, but each visit ended with more uncertainty and fear.

During a cardiac screening camp conducted by the Health Outreach team, early signs of congenital heart disease were detected. Tabassum was immediately referred to Sir H. N. Reliance Foundation Hospital, where Dr. Shivaprakash Krishnanaik confirmed the diagnosis. Within a month, a life-saving surgery was performed — giving young Tabassum the chance to breathe easier and begin healing.

For her parents, the change has meant more than recovery; it has brought

deep relief after a year of sleepless nights and unanswered questions.

Today, Tabassum is doing well and continues to thrive under regular follow-up, careful medical supervision, and compassionate care. Her story reflects the impact of the **New Health Seva Plan**, under which **35,000+ children have been screened** and **25 life-saving surgeries** completed — ensuring timely diagnosis and advanced care for children who need it most.



CASE STUDY

From Hesitation to Hope

Ayesha (name changed), a 44-year-old woman from Kamathipura in South Mumbai, had never undergone any medical screening. Years of stigma, fear, and widespread misinformation had held her back from medical consultation. During a community mobilisation drive, she gathered the courage to attend her first-ever cervical cancer camp under the New Health Seva Plan.

Her PAP smear showed atypical cells, and she was promptly referred to Sir H.N. Reliance Foundation Hospital for further evaluation. A biopsy was advised, and to ensure that cost would never become a barrier at such a critical moment, her investigations and follow-up care were fully supported through the programme — so she could focus on her health, not the expenses.

While awaiting her final results, Ayesha spoke about the reassurance the Outreach Team gave her — support that helped her feel seen, respected,

and less alone through an anxious time. Her story reflects the very real barriers many vulnerable women face in accessing care and the difference community-led healthcare can make when it reaches people with empathy and trust.

So far, the programme has screened **19,000 women**, with a commitment that every high-risk case receives continued management with dignity, sensitivity, and compassion.

Strengthening Access to Healthcare through Strategic Grants

Through **93 partner organisations**, health grants reached **13.28 Lakh people across 16 states**, strengthening access to specialised and affordable healthcare. Support for upgraded diagnostics, medical equipment and hospital infrastructure improved clinical decision-making, enhanced treatment capacity and brought complex care closer to underserved communities.

Complementing these interventions, **Anna Seva and nutrition support programmes** provided **over 99,800 meals**, benefitting **22,000+ students**, **72,000 community members**, and **1,500 children in shelter homes**. These efforts helped improve wellbeing, support treatment adherence, strengthen learning readiness and reduce the daily food burden for vulnerable families.



93
Total number of partners (implementation + technical) in Health

Promoting Integrated Social Care

Many vulnerable families face interconnected challenges such as elderly care needs, childcare responsibilities, and food insecurity. To address these gaps, Reliance Foundation supported the development of an integrated social care model at Yanam Old Age Home, providing residential care for seniors, childcare services for working families, and daily nutritious meals.

This holistic approach improved well-being across generations. Seniors experienced greater dignity, companionship, and emotional stability, while parents gained reliable childcare that enabled them to sustain livelihoods.

Free meals helped reduce food insecurity, allowing households to redirect limited resources toward essential needs such as medicines and education. By addressing multiple vulnerabilities through a single platform, the initiative strengthened family resilience and community stability.

CASE STUDY

Advancing Affordable Cancer Care

Access to specialised oncology care often requires patients to travel long distances and incur significant diagnostic and treatment expenses. To improve access to affordable cancer care, Reliance Foundation strengthened infrastructure at the **National Cancer Institute, Nagpur**, through the installation of bedside diagnostic systems and high-dependency wards.

These upgrades enabled faster diagnosis, timely treatment, and safer recovery for cancer patients. Families saved an average of ₹53,000 by

avoiding private diagnostic services and travel, while over 80% of patients accessed treatment free of cost, preventing distress financing.

Caregivers also reported reduced anxiety and a better ward experience. By decentralising specialised oncology services to Nagpur, the initiative improved treatment adherence and strengthened the institute as a regional centre for accessible cancer care.

80%
Patients serviced at National Cancer Institute in Nagpur availed services free of cost

SPOTLIGHT STORY

Technology Enabling Community Health at Scale

Technology has become a cornerstone of the Health Outreach Programme's mission to deliver accessible and high impact healthcare to underserved communities. A standout innovation this year was the **AI-enabled community cancer risk assessment model**, implemented in partnership with Karkinos Healthcare. Using a predictive questionnaire administered during door-to-door surveys, the model identified **65,000+ at risk individuals**, enabling early detection of multiple cancers, including breast,

cervical, oral, lung, and colorectal. This represents one of India's largest community level, AI driven screening initiatives.

Telemedicine further expanded access to specialist care for those facing mobility or economic barriers. With **1,483** remote consultations this year, patients received timely clinical advice, follow up care, and referrals without the need for travel or loss of income.

The integration of telehealth into routine outreach has strengthened continuity of care for chronic

diseases, geriatric patients, and cancer survivors. The programme also strengthened its data backbone through digitised health records, mobile-based tracking and analytics dashboards, enabling better monitoring of anaemia, non-communicable diseases, HPV vaccination and treatment adherence.

Together, these innovations are shaping a data-driven, inclusive model of preventive healthcare that can scale effectively to reach vulnerable communities.

CASE STUDIES

Strengthening Public Tertiary Care

Limited tertiary healthcare infrastructure delays access to specialised treatment, particularly for patients who cannot afford private care. To address this gap, Reliance Foundation supported the expansion of operating theatres and advanced

diagnostic facilities at **Sri Venkateswara Institute of Medical Sciences (SVIMS)**.

The upgraded infrastructure enabled timely cardiac, oncology, and gastroenterology care — often within 30 minutes of patient arrival. Many patients accessed specialised treatment for the first time, avoiding private-sector

costs exceeding ₹80,000. Same-day diagnostics reduced treatment delays and patient anxiety, while improved clinical workflows increased hospital efficiency. The initiative strengthened SVIMS as a sustainable regional referral centre, expanding access to affordable tertiary healthcare for underserved populations.

Emphasising Nutrition as a Health Enabler

Unhindered access to nutritious meals is essential for both health recovery and effective learning, yet many vulnerable families struggle to meet this basic need. To address this need, Reliance Foundation supported a large-scale daily nutritious meal programme

implemented by **Akshaya Chaitanya** for hospital caregivers and municipal schoolchildren.

Reliable access to meals improved energy levels, classroom engagement, and emotional well-being among students. Caregivers experienced reduced stress during hospital stays. Families saved approximately ₹125 per meal, enabling them to redirect

limited resources toward medicines and other essential needs. Teachers observed improved attendance and concentration, while hospitals reported calmer wards. The initiative highlights how consistent nutrition can strengthen health recovery, support learning readiness, and enhance household resilience.

Healthcare Initiatives across Different Locations

Shahdol

Strengthening Community Healthcare Access

CBM CSR Shahdol continued to strengthen community health systems by expanding access to primary and preventive care across project villages. Through mobile healthcare services, targeted nutrition interventions, and specialised camps, the programme brought essential medical support closer to underserved communities.

- **10,20,907 consultations** delivered through the Mobile Medical Unit (MMU), covering 150 villages across Shahdol, Kotma and SHPPL, ensuring last-mile access to primary healthcare

- **35 children** with severe acute malnutrition (SAM) and moderate acute malnutrition (MAM) and 88 antenatal care (ANC) and postnatal care (PNC) beneficiaries supported across 16 Anganwadis under the Malnutrition Control Programme; **122 children** recovered, helping transform these centres into malnutrition-free zones
- **5,297 adolescent girls** screened and sensitised on hygiene, nutrition and anaemia in residential schools; identified anaemic students received nutritional supplementation and follow-up care

Naroda

During FY 2025-26, the Naroda Textile Division advanced community wellbeing through preventive healthcare outreach and employee-led social initiatives.



- General health screening camps organised in **Muthiya Village**, benefitting **116 community members** with basic health check-ups, early detection support and medical guidance

- **152 units of blood** collected through blood donation camps organised on Shri Dhirubhai Ambani's Birth Anniversary, with strong participation from employees and volunteers, supporting local healthcare and emergency needs
- Founder's Day outreach with visually impaired students in Gandhinagar, where employees donated clothes, toys, shoes, books and chocolates collected during a Christmas Week drive, bringing joy and essential supplies to children at a blind school

Awareness sessions conducted through the Mobile Medical Van helped villagers understand government health schemes and digital health platforms. The initiative simplified enrolment procedures and guided families on accessing health insurance and welfare benefits; **326 individuals** were reached, improving health literacy and readiness to utilise public healthcare services.

Emergency Ambulance & Medical Referral Service

A 24x7 ambulance service supported surrounding villages with rapid response during medical emergencies. Patients received stabilisation at the Family Welfare Centre and were referred to nearby government hospitals when required.

Malnutrition Screening & Child Health Intervention

Under the **Zero Mission programme**, children at risk of malnutrition were identified and screened through dedicated health camps. Paediatric consultations, nutrition assessments, and follow-up plans helped strengthen child health monitoring. The programme enabled early detection and timely medical guidance for vulnerable children.

Cervical Cancer Prevention for Adolescent Girls

An HPV vaccination camp was organised in collaboration with the Sir H. N. Reliance Foundation Hospital medical team for cervical cancer prevention. The programme ensured safe administration of vaccine doses under medical supervision, along with counselling for parents and adolescents. A total of **198 girls** received vaccinations, strengthening preventive healthcare coverage.

Diabetes Prevention & Early Detection

Blood sugar screening camps were conducted across **11 villages** on the occasion of World Health Day. Random and fasting blood sugar tests helped identify high-risk individuals and facilitated timely referrals for treatment. The initiative screened

298 individuals, raising awareness on lifestyle-related diseases and preventive health practices.

Community Wellness & Preventive Health

Yoga sessions were organised in collaboration with schools and women's self-help groups to promote physical fitness and stress management. Guided demonstrations highlighted the role of yoga in preventive healthcare and holistic well-being. The programme engaged **361 participants**, with additional digital outreach reaching **672 women**.

Menstrual Hygiene Support for Schoolgirls

Sanitary Pad Banks were installed in **eight Zilla Parishad schools** to ensure girls had access to pads during emergencies. Regular stock monitoring ensured uninterrupted availability, supporting menstrual hygiene and reducing school absenteeism. The initiative benefitted **73 girl students**, reinforcing dignity and health awareness in schools.

Student Safety Education Programme

Road safety awareness sessions were conducted in secondary schools to educate students on responsible behaviour and accident prevention. Demonstrations on helmet use, pedestrian safety, and traffic discipline helped translate learning into practice. The programme reached **101 students**, encouraging safer habits among young road users.

Sanitation & Hygiene Behaviour Change Initiative

World Toilet Day activities were conducted across **16 villages** under the theme Sanitation in a Changing World. Community sessions, handwashing demonstrations, and school cleanliness drives reinforced safe sanitation practices and hygiene behaviour. The initiative reached **541 participants**, with additional reinforcement through SHG meetings, strengthening community-led sanitation efforts.



Jhajjar – MET

- The health programmes at this location include a total of **over 55,000 consultations** (MMU – 42,729; Aarogya Clinic – 9,312; Outreach Health Camps – 3,335), addressing a wide range of health concerns among underprivileged populations. Outreach health camps organised in collaboration with government health departments and private health institutions, strengthened healthcare access and expanded the reach and impact of the health interventions.
- Under the Primary Health Care initiative, MET has implemented a Mobile Medical Unit (MMU) to deliver essential health services directly to the doorsteps of communities in MET villages; currently, the MMU covers 24 MET villages and 6 construction sites, benefitting thousands of villagers.
- Through the Reliance Aarogya Clinic, **9,000+ clinical consultations** and **4,520 diagnostic consultations** have been conducted for construction labourers and villagers.
- As part of its eye care initiatives, MET distributed **over 400 spectacles** to improve vision and supported 23

individuals in undergoing cataract surgery at the district hospital, significantly enhancing their quality of life.

- On World Blood Donors' Day and Shri Dhirubhai Ambani's 93rd birth anniversary, Reliance organised blood donation camps, collecting **222 units** and reinforcing compassion, community collaboration, and commitment to social responsibility
- Through initiatives related to hygiene, Reliance supported 3 Gram Panchayats, promoting cleanliness and waste management through community participation; 4 tractors and trolleys were provided for garbage collection and disposal. To date, **29 tractors and trolleys** have been supplied to **28 Gram Panchayats**, contributing to healthier and more sustainable rural communities
- On World AIDS Day, Reliance conducted an awareness session for construction workers at Svam Toyal Packaging Ltd., Sector-10 under the leadership of Dr. Garima from Aarogya Clinic; the session promoted prevention, early diagnosis, and safe health practices.

KGD6

Support to Primary Health Centre

Reliance supported the Primary Health Centre (PHC) at Gadimoga to strengthen access to basic healthcare and emergency first-aid services for surrounding rural communities. The centre provided free consultations and treatment to villagers, improving access to essential healthcare.

Early Intervention & Rehabilitation Centre

The Reliance Dhirubhai Ambani Early Intervention Centre at Tallarevu provided care and special education services to 65 children with disabilities. The centre also delivered physiotherapy services to **5,777 adults** and **3,958 children**, supporting rehabilitation and improving quality of life.

Mega Medical Camp

A Mega Medical Camp was organised at PHC Gadimoga on October 31, 2025 to expand access to specialised healthcare services. A total of **350 villagers** received consultations from doctors in gynaecology, dermatology and general medicine, along with free medicines.

Mega Eye Camp

In collaboration with Dhrusti Eye Hospital, Kakinada, a Mega Eye Camp was conducted on 13 July 2025 to strengthen community eye care; **432 patients** were screened, **375 individuals** received spectacles, and **57 cataract surgeries** were facilitated to restore vision.

Swachhata Programme

The Swachhata Programme focused on adolescent health education, covering menstrual hygiene, nutrition, reproductive health and personal well-being; **180 adolescent girls** from schools in Gadimoga and Bhairavapalem participated and received health and hygiene kits.

Health Awareness for Pregnant & Lactating Women

A health awareness programme and Healthy Baby Show was organised in collaboration with the ICDS Department for rural women with limited access to health information and services; **120 pregnant and lactating mothers** received guidance on prenatal and postnatal care, early childhood development and disease prevention, along with nutrition kits.

Medical Assistance for Economically Vulnerable Families

Reliance provided medical financial assistance to individuals from economically constrained households in Gadimoga Gram Panchayat facing health emergencies. During the financial year, **92 patients** received support to help manage medical expenses and access necessary treatment.

Barabanki (BMD)



Blood Sugar Screening Camp

A blood sugar screening camp was organised on November 19, 2025 for casual workers on the occasion of **World Diabetes Day** to promote early detection of diabetes and related lifestyle diseases. **41 individuals were screened**, and those identified as high-risk were counselled and referred for follow-up care and medical management.

BMD & Physiotherapy Camp

A Bone Mineral Density (BMD) and physiotherapy camp was conducted on October 15, 2025 to promote early detection of bone health issues among casual workers; **36 participants** underwent BMD testing and orthopaedic assessment, with physiotherapy guidance provided for posture correction, strengthening exercises, and management of osteopenia cases.

Hypertension & Diabetes Awareness

A health camp held on November 24, 2025 focused on awareness and early detection of **hypertension and diabetes** among casual workers. **159 participants** received health check-ups, medicines, and counselling on lifestyle modifications, including guidance on the **DASH diet** for better disease management.

Community Wellness Programme

On June 21, 2025, a yoga session was organised at the BMD administrative hall to promote physical fitness, stress management, and preventive healthcare among employees; **40 employees** participated in guided sessions led by a government yoga instructor, encouraging regular adoption of healthy lifestyle practices.

Jamnagar

2,00,228 consultations delivered through integrated healthcare services, including 20,348 via Mobile Medical Units, 92,675 at Static Medical Units, and 87,205 through health camps, ensuring last-mile access to quality care.

Eye care services supported 5,756 patients, with 520 cataract surgeries conducted to restore vision. Preventive health interventions, including anaemia screening among women, strengthened early diagnosis and care.

Additionally, 22,111 new individuals accessed healthcare services for the first time, expanding outreach to underserved communities.

CASE STUDY

A Safety Net at a Time of Distress

In Mubarikpur village, Gurugram, 27-year-old Kanta lived with her husband Sandeep and their young daughter, relying on daily wage labour to sustain the family. Like many rural households, they had little awareness of government welfare schemes and had no financial safety net.

During a household survey, the Mission Sahyog team — implemented by MET and supported by Reliance Foundation — identified the family's vulnerability. The team helped them create Ayushman Bharat cards, open bank

accounts, and enrol in the Pradhan Mantri Jeevan Jyoti Bima Yojana (PM-JJBY), securing life insurance coverage of ₹2 Lakh at a minimal premium.

Tragically, Sandeep passed away in May 2025 after battling tuberculosis. With support from the Saaras Team, Kanta completed the insurance claim process and received ₹2 Lakh in financial assistance. The support helped her clear medical debts and secure her daughter's future — demonstrating how last-mile facilitation can transform government schemes into real protection for vulnerable families.



Education

Reliance Foundation works across the life cycle, from early childhood to higher education and lifelong skilling. With education at the core of its work, and the belief that this is a catalyst for national advancement, it creates pathways to enable opportunities for children and young people realise their aspirations, and contribute meaningfully to society. The efforts focus on expanding access, strengthening learning ecosystems, and nurturing future-ready capabilities that support inclusive and sustained development.

UN SDGs



58.25 Lakh+

Children, students, youth and teachers reached through various education initiatives since inception



Early Childhood Care and Education (ECCE)

Recognising the importance of early childhood as a formative phase for cognitive, social, emotional, and physical development, Reliance Foundation aims to help establish a model for transforming early childhood care and education (ECCE) through Anganwadis, to prepare children aged 3-6 years for school readiness and foundational learning. Reliance Foundation believes that building strong foundations in early childhood, enables a flourishing future for all individuals.

Implemented across multiple locations, Reliance Foundation's ECCE programme is underpinned by focused partnerships – particularly in Maharashtra and Telangana – with the Departments of Women and Child Development to strengthen Anganwadi centres through play-based learning, capacity building of ICDS functionaries, and active parent-community engagement. By integrating enriched learning environments, technology-enabled tools, and continuous training, the ECCE programme is strengthening foundations for lifelong learning among young children.

The programme adopts a holistic ecosystem approach spanning the Anganwadi centre, home, and community. Reliance Foundation has established model Anganwadi Learning Labs (AWLLs) and State ECCE Resource Labs (SERLs) equipped with digital tools, play-based learning materials, solar power, WASH facilities, and culturally contextual, vibrant BaLA (Building as Learning Aid) art and murals to create enriched early learning environments.

Capacity building of ICDS functionaries remains central, with structured in-person training and on-site support through classroom observations and discussions. Regular training for Child Development Project Officers (CDPOs), supervisors, Anganwadi workers and helpers strengthen play-based pedagogy, parent engagement, and child assessment practices.



Reliance Foundation promotes parent and community participation through parent groups, monthly engagement sessions, bite-sized engagement videos, and events such as ECCE Day and School Readiness Melas – extending early learning into home environments.

Technology serves as a key enabler across each of these functions, linking AWLLs with the State Resource Lab. Tech-powered data collection and monitoring tools enable access to real-time data and data driven decision making. Digital communities of practice help knowledge sharing among Anganwadi teachers, caregivers and other stakeholders for use in children's learning.

Key Updates of FY 2025-26

In FY 2025-26, the programme demonstrated strong systemic impact and measurable improvements in both states.

- The Government of Telangana adopted Reliance Foundation's ECCE Day activity an initiative to boost parental engagement, training teachers in creating Learning Corners, and strengthening school readiness statewide across 35,000+ Anganwadi centres, reflecting institutional confidence in the programme's design and implementation
- External evaluations indicate significantly higher confidence among Anganwadi teachers and parents in engaging children in

- meaningful early learning activities due to programme support
- In sector meetings in Telangana and Maharashtra, time allocation was increased for early childhood education signalling stronger system-level prioritisation of ECCE
- These collective efforts contributed to improved child attendance post-intervention, underscoring the programme's effectiveness in strengthening engagement, learning environments, and overall participation

24

Anganwadi Learning Labs set up

1,115

Anganwadi centres in Maharashtra and Telangana set up

2,210

ICDS functionaries trained (includes AWT, AWH, and Supervisors)

5,300+

Parent groups

~27,000

Mothers engaged across Maharashtra and Telangana

32,614

Children cumulatively reach since inception



CASE STUDY

From Classroom to Conference

Reliance Foundation, in partnership with the Women Development and Child Welfare (WDCW) Department, Telangana, and ICDS Maharashtra organised a first-of-its-kind Anganwadi Teachers' Seminar – creating an empowering space for teachers to share lived experiences and celebrate their contributions to early childhood learning. Anganwadi teachers were

invited to submit articles across three themes: play-based pedagogy, learning environments, and community engagement. A total of 368 teachers' submissions captured field innovations and lived classroom experiences. For many, it was their opportunity to present publicly – a big moment of pride and professional affirmation.

"This is the first time I stood on such a big stage and spoke about my work. I feel proud and emotionally fulfilled," said Aruna* from Siddipet.

Maithili, an Anganwadi teacher from Thane said, "Walking on the stage to receive my certificate while fellow teachers clapped for me, is a moment I will cherish forever."

Moderated by CDPOs, many former Anganwadi teachers themselves – the seminar reinforced affirmed teachers as emerging confident knowledge leaders within the ECCE ecosystem.

*Name changed due to privacy reasons

LiftEd – Promoting Foundational Literacy and Numeracy

Reliance Foundation is a founding member of LiftEd, a multi-stakeholder initiative aligned with the Government of India's NIPUN Bharat Mission, to strengthen Foundational Literacy and Numeracy (FLN) – the bedrock of a child's learning journey. LiftEd brings together philanthropic and civil society partners to scale FLN impact across India. As part of LiftEd, Reliance Foundation is working together with founding partners Michael and Susan Dell Foundation, Bridges Outcomes Partnerships and others partners such as British Asian Trust and Central Square Foundation to impact 65 Lakh children over six years.

The programme combines on-ground with at-home interventions. Through a Development Impact Bond (DIB), on-ground partners – Kaivalya Education Foundation, Language Learning Foundation, Peepul and Pratham Education Foundation – are collaborating with state governments in Himachal Pradesh, Haryana, Uttar Pradesh and Bihar to build system

capacity and improve FLN delivery for school children in grades 1-3. Meanwhile, implementing partners are helping build capacity of stakeholders across the government cascade while fostering community engagement to improve FLN outcomes.

While each implementing partner has a distinct approach, the three common intervention pathways anchor the programme:

- Data-driven governance, enabling block and zonal review meetings to use FLN data for informed decision-making and action
- Shifting the mindset and capability of teacher mentors – repositioning them as instructional leaders (mentor cadre are known by different names across states) to build the capacity of teachers instead of being administrative functionaries
- Strengthening teacher practices and community engagement to improve teaching and learning practices in classrooms to drive better FLN outcomes among children

LiftEd also includes an **EdTech Accelerator** designed to scale innovative at-home and community-based FLN solutions for low-income families. Operating across 15+ states,

it has reached over 31 Lakh children in two years, advancing tech-based home-learning while building evidence on what works. Non-profit education partners of the initiative include Chimple, Ei Mindspark, Pratham Education Foundation, Rocket Learning, Sesame Workshop India, ThinkZone, and Top Parent.

Learnings from LiftEd are expected to generate valuable insights into the design and application of blended finance and outcomes-based models for education in India, laying the groundwork for more accountable, scalable, and impact-driven financing approaches in India.

41 Lakh

Children benefitted so far from LiftEd across 15+ states in India



CASE STUDY

Classroom Innovation in Rehra

In Rehra block of Balrampur district, Uttar Pradesh, rising absenteeism and uneven teaching practices were hindering Foundational Literacy and Numeracy (FLN) levels. Teachers had no benchmarks for effective instruction, while community engagement with schools remained limited. As children dropped out of school, the block struggled to meet its targets under the NIPUN Bharat Mission.

Through LiftEd's interventions, Kaivalya Education Foundation, alongside the district's Block Education Officer and Academic Resource Persons (ARPs) began to drive change. Simplified, FLN-aligned teaching practices were introduced, supported by regular review meetings and teacher recognition for better mentorship and motivation. Community-led campaigns, such as Bal Sansad and Bulawa Toli helped bring children back to classrooms, while parent-teacher meetings strengthened trust in schooling.

The shift was visible: attendance improved, collaboration among teachers and stakeholders deepened and classrooms became more structured and joyful learning spaces. Rehra's transformation journey demonstrates how block-level leadership, mentoring, and community mobilisation can translate intent into measurable learning gains.





Building Futures through Holistic Learning and Educational Excellence

Dhirubhai Ambani International School (DAIS) and **Nita Mukesh Ambani Junior School (NMAJS)** are world-class institutions dedicated to academic excellence and holistic development. While DAIS offers globally recognised IGCSE and IB Diploma programmes, NMAJS provides inquiry-driven learning through the IB Primary and Middle Years Programmes, integrating conceptual understanding with technology-enabled education.

The academic year 2025-26 strengthened an inclusive, innovation-led learning ecosystem across DAIS, NMAJS, and NMAJS Early Years Centre (EYC). Guided by the Reliance spirit of 'We Care', the schools expanded equitable access to global academic pathways, STEM learning and student well-being, ensuring that excellence and empathy shaped every learner's journey.

Key Updates of FY 2025-26

Sustained Academic Excellence

Students achieved exceptional academic outcomes across IB, IGCSE and ICSE programmes, significantly exceeding global benchmarks. DAIS was Top 15 in the world in the IB Diploma results. The IB cohort recorded an average score of **39.7 compared with the global average of ~30**, with several students achieving the maximum score and **more than half scoring above 40**. Strong performances were also reflected in the IGCSE and ICSE examinations, with a large majority of students securing top grades and very high overall averages.

These results translated into strong higher education outcomes; **all applicants** secured admission to universities of their choice, receiving **392 offers from 116**

universities across seven countries. **50% of the class got into QS Top 30 and US News Top 30 and UK Russel Group universities**, while nearly half the cohort was admitted to their first-choice university and 70% to one of their top two choices. In addition, 34% of students secured scholarships worth US\$ 3.6 million over four years, reflecting the global competitiveness of the graduating class.

Innovation & STEM

- **Strong results achieved in international STEM Olympiads**, reflecting high levels of academic and technical proficiency
- **Increased female participation in robotics and coding programmes**, strengthening gender inclusion in STEM pathways

Equity, Well-being & Care

Student support systems were strengthened through an expanded integrated Student Care Department and the introduction of a Sensory Room for neurodiverse learners. A structured DAIS-NMAJS Pastoral Programme was implemented across campuses, alongside **65+ parent engagement initiatives** and weekly educator development.

Highlights of FY 2025-26

The year marked institutional consolidation with a sharper equity and impact lens.

At **NMAJS-EYC**, a **Reggio-inspired open learning environment** strengthened children's agency, voice, and belonging. Intentionally designed flexible spaces nurtured collaboration, co-regulation, and creativity. In parallel, the EYC developed an **emergent Digital Literacy Framework** in collaboration with internal and external experts to guide early engagement with technology through cyber safety, digital awareness, and responsible habits — ensuring early exposure remains developmentally appropriate, equitable, and grounded in well-being.

At **NMAJS (Primary Years Programme & Middle Years Programme)**, interdisciplinary inquiry deepened conceptual understanding. The inaugural Class 8 cohort completed MYP Community Projects on sustainability, health equity and social entrepreneurship. Structured debates and global collaborations enhanced articulation and ethical reasoning.

Across **DAIS Secondary**, academic excellence was complemented by robotics, advanced research pathways and international competitions, with AI tools thoughtfully integrated to support differentiated learning.

The **DAIS-NMAJS Pastoral Programme** evolved into a coherent architecture of care. Anchored in advisory systems, house structures, restorative practices, and technology-enabled well-being monitoring, the programme ensures every learner is known, supported, and guided. Integrated counselling and learning support systems enable early intervention, reinforcing dignity and resilience among students.



A defining milestone was the unveiling of a **two-storied Tree House at Nita Mukesh Ambani Junior School**, a birthday gift from Founder & Chairperson Mrs. Nita M. Ambani. Designed as an immersive space with a Maker Space, critical thinking area, performance corner, puzzle zone, free play area and library nook, it embodies experiential, nature-connected learning from an early age.

Innovation across campuses was consistently guided by compassion — ensuring access, belonging, and long-term transformation.

Robotics World Champions – STEM Access at Scale

Two student teams from DAIS represented India at the FTC World Championship. Team Matrix emerged as World Champions, recording an unprecedented achievement. What began as a modest robotics programme in 2018 is now a globally competitive innovation pipeline. Through structured mentorship, equitable access to high-level coaching, and applied engineering integration, students are developing resilience, collaboration and advanced problem-solving skills. This success reflects not only competitive excellence but the democratisation of access to world-class STEM platforms.

Digital Literacy with Care

Recognising that digital exposure begins early, the EYC designed a developmentally aligned **Digital Literacy Framework** focusing on cyber safety, responsible exploration, and foundational digital skills. Through guided engagement and explicit digital citizenship conversations, young learners build positive technology habits alongside creativity and curiosity. By embedding digital awareness within a nurturing environment, the programme ensures that innovation strengthens rather than disrupts well-being — laying foundations for lifelong responsible engagement.

Pastoral Care in Action – Support for Every Learner

The DAIS-NMAJS pastoral system ensures each student is connected to a trusted adult advocate. Structured advisory time, well-being surveys, restorative conversations, and integrated counselling create a proactive care framework. Technology-enabled dashboards support early identification of academic, emotional, or social needs. This preventative model shifts pastoral care from reactive response to systemic support — building resilience, belonging, and character development across age groups.

Alumni Impact and Career Discovery

The **Alumni Impact Programme** at DAIS now connects 1,800+ alumni across 18 countries. Through Career Discovery Day, mentorship platforms, and DAISpora sessions, students accessed global career pathways and higher education insights. Technology-enabled engagement ensure equitable access to mentorship regardless of geography, strengthening aspiration and preparedness.

SPOTLIGHT STORY

Technology as a Catalyst of Learning and Student Well-being

Across DAIS and NMAJS, technology integration has moved beyond infrastructure to intentional impact. As a **Microsoft Showcase School**, digital fluency is embedded across stages — enhancing research literacy, collaboration, and real-time formative feedback. Robotics platforms, such as **FTC and FRC** bring applied STEM integration to life, where coding, engineering, and design thinking converge with teamwork and problem-solving.

Artificial Intelligence tools are introduced through faculty

training and ethical frameworks, supporting differentiated instruction and personalised learning while safeguarding academic integrity. Technology also strengthens pastoral care through data-informed monitoring that supports early identification of student needs, and thus early intervention. In EYC, digital literacy begins with guided exploration and cyber safety, ensuring innovation supports student well-being. Hybrid engagement platforms deepen parent partnership and student voice.

Leadership restructuring under the **Head of Learning and Head of Student Life** model reflects systemic innovation, aligning governance, flexible scheduling, and interdisciplinary collaboration with personalised student support. Across the ecosystem, technology functions not as a substitute but as a catalyst — reducing barriers, strengthening inclusion, and expanding access to global opportunities while keeping compassion central to every decision.

Reliance Foundation Schools (RFS)

The 12 Reliance Foundation Schools (RFS) located in Jamnagar, Surat, Vadodara, Dahej, Koparkhairane, Lodhivali, Nagothane, and Mouda, educate around 14,407 students each year from Nursery to Class 12. These schools have 767 teachers and 158 non-academic staff. Six of the schools are affiliated with the Central Board of Secondary Education (CBSE); four of them with the Gujarat State Education Board, and two with the Maharashtra State Education Board. Reliance Foundation Schools are committed to providing high-quality education with a focus on academic excellence and holistic development – developing each school as a happy school.

Highlights of FY 2025-26

Board Results 2025

Across Reliance Foundation Schools, academic outcomes remained strong across boards. CBSE schools recorded a 99.75% pass rate in Class 10 and 100% in Class 12 across all streams, while Gujarat Board schools achieved 99.48% in Class 10 and 100% in Class 12 (Commerce). Maharashtra Board schools reported a 100% pass rate in both Class 10 and Class 12, reflecting consistent academic performance across the network.

Microsoft Showcase Schools

Reliance Foundation Schools teachers continue to advance digital pedagogy through global certifications, including Microsoft Advanced Educator (MAE), Microsoft Innovative Education Expert (MIEE), and Microsoft Certified Educator (MCE), with many preparing for higher certifications. A total of 645 Reliance Foundation teachers are now certified Microsoft Educators; 389 Reliance Foundation Schools teachers are recognised as Microsoft Innovative Educator Experts (MIEE). In 2025, 10 Reliance Foundation Schools secured renewal as Microsoft Showcase Schools for the fourth consecutive year – placing them among the 72 such schools in India and 904 schools globally.

Sports & Co-Curricular Achievements

During the year, students from Reliance Foundation Schools excelled in co-scholastic, sports and co-curricular activities. They secured 37 international awards, 406 national awards, and 741 awards at the zonal, state, and district level, showcasing Reliance Foundation Schools' dedication to providing a well-rounded education.

Key Updates of FY 2025-26

School Innovation Council

Through School Innovation Councils (SICs) – a joint collaborative effort of the Ministry of Education's Innovation Cell and the All-India Council for Technical Education (AICTE) – 140 certified School Innovation Ambassadors mentor students from Classes 6-12. At the annual School Innovation Contest, which Reliance Foundation Schools take part in every year, KDARFS Jamnagar's 'Anti Sleep Glass' project was selected for presentation at the National Level Exhibition held at Galgotias University.

Reading Programme

A structured Reading Programme was introduced across all Reliance Foundation Schools in 2025 to enhance students' reading and writing competencies. As part of it, seven teachers enrolled for pedagogy courses offered by the Regional Institute of Education, Bhopal, while students were encouraged to engage in structured newspaper reading and critical thinking, so that they become informed and responsible lifelong learners.

STEM Education in RF Schools

RF Schools strengthen real-world STEM learning through lab visits, national competitions, and advanced research exposure. This year, more than 350 students participated in the National STEM Quiz 4.0, with 12 students being selected for the national finals. KDARFS Jamnagar established

a Robotics Lab for students of Classes 5-12. A Class 12 student of RFS Koparkhairane earned the prestigious Research Science Initiative India (RSI) 2025 Internship at IISc Bangalore. Also, students visited CSIR Labs in Gujarat and Maharashtra, gaining hands-on experience.



Student Care Services

The year saw 31 special educators and counsellors providing targeted academic, social-emotional, and mental health support to students and teachers. Awareness sessions fostered empathy, acceptance, and inclusion across school communities. Implementation of the 'Handbook on Special Education Services' marked a major milestone in 2025. Developed by the RFS Academic Council with counsellors and special educators, it standardised processes, strengthening coordination and enabling focused, timely, and effective student support.

Child Safety and Well-being

The year saw the implementation of a comprehensive Child Safety framework through continuous sensitisation programmes for leadership, teachers, and parents. Child Safeguarding and Protection Policies and Procedures were updated and codified by Reliance Foundation School Academic Council.

Project CACA

Social Axiom Foundation (SAF) is running Project CACA – Children Against Child Abuse – a safety and well-being programme across RF Schools, with pilots in Jamnagar, Surat, and Koparkhairane.

Capacity-building sessions on the POCSO Act were conducted for school leadership teams. The programme also delivered stakeholder-focused webinars and specialised sessions on child safety and mental well-being for both students and parents.

EdTech platform Pilot in RF Schools

Superr, an EdTech platform developed by Jio Digital Platforms in collaboration with Superr, is being piloted for Class 6 across five CBSE Reliance Foundation Schools (Jamnagar, Surat, Koparkhairane, Lodhivali, Nagothane). The cloud-based ecosystem integrates school and home learning through Superrboards and SuperBooks. The Superrboards have been installed in all Grade 6 classrooms, and digital SuperrBooks have been distributed in three schools so far. Teacher and student orientations were conducted to enable personalised, engaging digital learning experiences. In February 2026, four students and one teacher from KDARFS Jamnagar showcased the AI-powered Jio Classroom to Hon'ble Prime Minister Shri Narendra Modi at the 'India - AI Impact Summit 2026' held at New Delhi, highlighting the ongoing pilot of the Superr EdTech platform across five RF Schools.

Digitalisation & AI Literacy

Across the schools a major digitalisation project was implemented through an integrated ERP suite covering academic administration and school operations. Among other initiatives were the piloting of Superr EdTech, deploying a digital Staff Profiling Module through ERP and enhancing cybersecurity through Multi-Factor Authentication (MFA) for staff and students accessing RF School domain IDs.

Career & College Counselling

Career guidance was promoted through participation in professional forums such as IC3 (International Career & College Counselling Conference), university fairs, and structured career awareness sessions for students and parents. Around 125 staff members across RF Schools were trained under the IIT Madras Pravartak Career Guidance Programme. Psychometric assessments were also organised for students of Classes 8-12, enabling aptitude mapping.

Alumni Engagement

Reliance Foundation Schools maintained active connections with former students. Alumni contributed through career talks, mentoring interactions, and experience-sharing sessions. At RFS Surat school, alumni were invited to serve as jury members for Talentia 2025-26 competitions, while Vadodara (GM) organised an alumni athletic meet.

Research and Publication Assistance

Promoting academic thought leadership, RFS academic staff published 17 research papers and research articles in national journals, magazines, seminars and conferences, covering classroom best practices, pedagogical best practices, art education, and curriculum development in the school.

Cultural Exposure

Students across Reliance Foundation Schools engaged with leading artists and institutions; 637 students explored the Light Atelier Exhibition at NMACC, while some students got the opportunity to perform alongside Shankar Mahadevan at Reliance Corporate Park Navi Mumbai. Students from Vadodara schools also visited the Performing Arts facility at MS University.

Professional Development (PD)

This year, a total of 5,508 training hours were delivered, including a mandatory one-week annual PD, benefitting 924 teachers and staff across schools. The PD initiatives focused on pedagogical innovation, curriculum implementation, student engagement strategies, assessment practices, inclusive education, AI and technology integration. Programmes were organised in collaboration with IIT Madras, NCERT-affiliated institutions, Society of Parents of Children with Autistic Disorders (SOPAN) and SNDT Women's University, thereby deepening instructional expertise and strengthening teaching and learning.

Leadership Development

This year, RFS Academic Council dedicated significant attention to the leadership development of Reliance Foundation Schools. Key initiatives included a comprehensive 'Safety and Compliance' summit for Principals, Vice-Principals and Heads of Administration. The **ECIS Middle Leader Programme** upskilled 44 RFS leaders across multiple residential editions at Jio Institute, focusing on leadership culture, conflict resolution, AI and digital fluency, and instructional design. Furthermore, RFS leaders engaged in forward-looking pedagogical workshops, including the 'Learning to Learn' masterclass on student neuroplasticity and the regional School Leaders Conclave.

Institutional Collaborations

To provide a varied range of learning experiences to students, collaborations were undertaken with IIT Mumbai, NCERT, National Environmental Engineering Research Institute (NEERI), Nagpur, Council of Scientific & Industrial Research (CSIR), Nehru Science Centre, Azim Premji University, Bengaluru, Raman Science Centre, Gujarat Council of Science City, and a host of regional institutions.



Technology and Innovation in RF Schools

AI Classroom Foundation Course

Aligned with the National Education Policy (NEP) 2020 and the upcoming CBSE AI curriculum, a four-week 'AI Classroom Foundation Course' was rolled out across all RF schools in collaboration with Reliance Jio and the Jio Institute. Designed for students of Classes 6-10, the course offers exposure to cutting-edge Gen AI tools, digital ethics and online safety. A total of 2,913 registrations (2,383 students and 530 teachers) from RF Schools, with 77% of teachers already completing the course. Engagement and learning outcomes are being monitored through dashboards for the school leadership.

2,913+

Registered at RF Schools for AI Classroom Foundation Course



Reliance Foundation Scholarships

The Reliance Foundation Scholarships programme one of India's largest and most transformative private-sector educational initiatives, is built on the vision of Reliance Founder-Chairman Shri Dhirubhai Ambani, to empower youth and enhance opportunities to help them achieve their potential. Till date, the over **33,000 scholarships have been awarded through the Dhirubhai Ambani Scholarships and the Reliance Foundation Scholarships.**

In 2022, Mrs. Nita Ambani, Founder and Chairperson of Reliance Foundation, announced a landmark commitment to award **50,000 scholarships over 10 years** to provide meritorious students with the financial freedom, mentorship, and digital tools necessary to become the leaders of tomorrow.

The Reliance Foundation Scholarships programme currently supports **20,000+ undergraduate and postgraduate scholars**, including 5,100 scholars onboarded in the past year, across **1,700+ institutes** in India. Through holistic financial support, mentorship, and technology-enabled access, the programme empowers meritorious students from underserved backgrounds to become future-ready professionals and leaders.

The Reliance Foundation Scholarships has become a much sought-after offering for students pursuing their higher education, with over 1.25 Lakh

applications received in the past year for 5,100 scholarships. The results were declared on the birth anniversary of Shri Dhirubhai Ambani, as a mark of continuing his vision for the empowerment of youth.

Through this scholarship, 5,000 UG students in their first year, pursuing any branch of study in India, are awarded ₹2 Lakh financial grants through the course of their study while 100 PG scholars among the brightest in specific technology-related fields are awarded ₹6 Lakh grants through the course of their study. Both scholarships are accompanied by a strong mentoring and networking programme, supporting the students through their educational journey, to become leaders in their respective fields.

Key updates of FY 2025-26

- **Indicating the diversity of the programme, the applicants were from 27 states and 7 Union Territories, 500+ districts** nationwide
- From over 1.25 Lakh applications, **5,100 scholars** were awarded this year in a highly competitive selection, including **850+ scholars** from prestigious institutions like the **IITs and NITs**
- **1,350+ institutes represented this year**, reflecting a broad and inclusive academic footprint

The Reliance Foundation Scholarships marked a milestone in the past year, with a focused effort to enhance the

scale, diversity and engagement to ensure that the most meritorious scholars are identified, no matter which part of the country or what background they came from.

The Reliance Foundation Undergraduate Scholarship outreach expanded significantly over the past year, ensuring diversity with **48%** of selected scholars being female, **125+** students with disabilities, and 82% of scholars being drawn from lower-income households (less than ₹2.5 Lakh annual income).

The postgraduate cohort identifies India's future leaders and students of excellence in specific fields, including **51% scholars from IITs and IISc and other prestigious institutions**, and strong academic benchmarks, with **28% of scholars securing GATE scores above 700**. Scholar engagement also deepened through **regional meets**. **The first regional meet** in Bengaluru that brought together **150+ scholars** for the first time, creating opportunities for peer learning and collaboration. This ecosystem is further enriched by alumni-led platforms, where former scholars share practical insights to mentor the current cohort, collectively advancing the programme's reach and commitment to nurturing India's future leaders.

Overall, the programme advanced reach, diversity, and scholar engagement during the year to reinforce its position as one of the foremost scholarships in the country.



CASE STUDIES

Turning Observation into Impact

For Pranjal Pandey, a Class 10 student of RFS Nagothane EM, innovation began with a simple observation — plastic waste piling up along Nagothane's riverbanks during his daily commute. The concern was shaped into a structured project through

the school's innovation council and prototyping workshops. The process culminated in the development of the 'E-Cover', an eco-friendly alternative to conventional mobile phone covers aimed at reducing plastic pollution.

Pranjal presented his solution at the School Youth Ideathon (SYI) 2025 at IIT Delhi on January 18, 2026. Competing among 125 of India's top young

innovators under the theme 'Make for the Planet', he earned a gold medal and Certificate of Excellence. Supported by mentors Dr. Pragati Kolhe, Mr. Kaitan D'souza, and Mr. Shuvabrata Singha, Pranjal's journey reflects how Reliance Foundation Schools nurture curiosity, structured thinking, and real-world problem solving.

Young Innovators Earn National Research Recognition

Four Class 9 students from Reliance Foundation School, Lohivali (MM & EM), secured the NCERT PRAYAAS 2025 Research Grant for two innovative projects — 'Agri Crawl Drone: An AI-Based Precision Spraying System

for Sustainable Farming' and 'Fungal Innovations for Climate Action – Eco-Friendly Paper, Glue, and Bioplastics from Mushrooms'. Selected through a rigorous two-tier process, they emerged among 38 projects nationwide, with both entries awarded ₹50,000 each for further research.

Shamika Gore and Aaradya Dhawade (guided by Ms. Vaishnavi Modak)

and Tanish Patil and Varad Jadhav (guided by Ms. Yamita Chaumal) will now dedicate 5-7 hours weekly to advance their research under NCERT mentorship until December 2026. This continued national recognition — following selections in previous editions — reflects RFS's strong culture of scientific inquiry and innovation.

CASE STUDIES

Rebuilding Dreams through Education

Mirthiga's journey from a small village near Kumbakonam to a professional career is marked by resilience and quiet strength. After losing both parents during her school years, financial uncertainty threatened her higher education. While pursuing

B.Sc. Computer Science at SASTRA University, she applied for the Reliance Foundation Scholarship Programme and was selected — support that proved to be a turning point in her life.

The scholarship enabled her to complete her degree independently, without burdening her extended family, and restored confidence and stability.

Soon after graduating, she secured campus placement at Zoho Corporation as a Payments Analyst. Today, Mirthiga supports her grandparents and funds her younger brother's education, while guiding peers toward scholarship opportunities — demonstrating how sustained scholarship support can translate into resilience, stability, and long-term socio-economic mobility.

Sowing the Seeds of Determination

Hiten Paswan grew up in Jorhat, Assam. The passing of his father when he was still in school led to both emotional turmoil and financial adversity as his mother struggled to run the household on a meagre pension. When Hiten sought to pursue his Masters in **Agricultural Science**

at **Assam Agricultural University following his graduation**, affordability became a serious concern.

His selection for the Reliance Foundation Postgraduate Scholarship Programme brought timely financial assistance, enabling him to continue his higher education without taking an education loan, easing pressure on his family. The scholarship also provided

essential tools and resources for his research. During his Masters, Hiten also prepared for the Assam Public Service Commission examination and successfully secured a position as an **Agriculture Development Officer** under the Government of Assam. Today, he mentors students facing similar constraints — extending the same opportunity that supported his own journey.

Jio Institute

Jio Institute is a multidisciplinary higher education institution committed to excellence in teaching, research, innovation, and sport. Bringing together global scholars and industry experts, it offers students a transformative experience through full-time postgraduate programmes, executive and continuing education, research platforms, and high performance sporting infrastructure.

The Institute offers three one-year, full-time, residential PGPs in Artificial Intelligence & Data Science, Management (specialisation in Marketing & Finance), and Sports Management that combine deep domain expertise with hands-on skill development, leadership training, and global exposure. Complementing these are Executive Education programmes AI & Digital Transformation, Strategy & Leadership, Retail Management and Women Leadership, designed to support continuous upskilling of professionals.

The Institute also runs Continuing Education programmes tailored for diverse age groups and disciplines. These include summer and winter school programmes for high-school and undergraduate students, K-12 teacher training programmes and 'India Immersion' programmes for students at universities in Singapore. Jio Institute is dedicated to advancing knowledge and innovation through cutting-edge research. Faculty-led research addresses national and global challenges across biomedical and life sciences, materials and semiconductors, and advanced computing.

Leveraging state-of-the-art sporting infrastructure, it partners with renowned sports organisations to deliver various sports training and development programmes. These include Elite Athletes Academy programmes (with RFYS), community sports programmes for local athletes, divisional, state and national-level competitions such as the Raigad

District Athletics Association (RDAA) events and Maharashtra Athletics Association (MAA) championships, Divisional School Games, National Throws Competition; and corporate sports events.

In December 2025, following the promulgation of the amended Maharashtra Private Universities (Establishment and Regulation) Act 2023, Jio University was formally established as a self-financed state private university.

Highlights of FY 2025-26

- **320** graduates from the PGP batches of 2022-23, 2023-24 and 2024-25 were awarded degrees at Jio Institute's first Convocation
- **100%** placement was achieved by the 123 students of the PGP Class of 2024-25 across AI & Data Science (55), Management (52) and Sports Management (16), with an average 134% increase in CTC, and AI & DS

graduates more than doubling their pre-PGP salaries

- **200+** attendees and 20+ speakers participated in the 2nd Indian Sports Management Conference (ISMC 2025), where 25+ research papers were presented and the INSMA 2025 Research Compendium was unveiled
- **140+** educators from **50+** schools across 11 states/UTs and **30** cities attended two editions of the ECIS Middle Leader Programme, with 30+ participants earning full certification
- **100+** educators from **80+** schools across 24 states/UTs joined the Teachers' Conclave 2025
- **55** students from Singapore Management University (SMU) and Singapore University of Social Sciences (SUSS) participated in three India Immersion programmes in Nov-Dec 2025, as the Institute expands its 'Study in India' outreach

Key Updates of FY 2025-26

Postgraduate Programmes

Live Projects

Students of the PGP Class of 2025-26 in Artificial Intelligence & Data Science and Sports Management undertook **12+ live projects across 10 organisations**, gaining early exposure to real-world industry challenges and applying analytical and strategic skills in live business contexts.

The PGP Class of 2024-25 secured internships and placements across **47+ organisations** spanning consulting, retail, FMCG, manufacturing, IT/ITeS, sports and allied sectors — with recruiters ranging from global firms such as KPMG and EY to leading corporates, including Tata Consumer Products, McDonald's, Reliance Industries Limited and TCS.

Study Abroad Module

The Study Abroad Module ensures that every student benefits from a two-week international immersion, combining academic learning, industry exposure and cultural engagement to build global perspective and cross-cultural competence.

In 2025-25, the PGP AI & Data Science cohort visited **Nanyang Technological University (NTU), Singapore** while the Sports Management cohort attended **Hamad Bin Khalifa University (HBKU), Qatar** expanding their academic and professional horizons.

At NTU, Singapore, students engaged in advanced coursework on Business Applications of AI and Strategy for AI, alongside industry visits to Rockwell Automation and Accenture to explore Industry 4.0, Generative AI, and real-world digital transformation. The immersion combined academic rigour with exposure to Singapore's innovation ecosystem and cultural landmarks. At HBKU Qatar, students explored Olympic studies, mega-event operations, sports media and crisis management, complemented by on-ground exposure at Lusail Stadium, Aspire Academy, the Supreme Committee for Delivery & Legacy and the Formula 1 Qatar GP. The experience blended global sports governance insights with Qatar's cultural and sporting heritage.

Conclaves at Jio Institute

During 2025-26, PGP students hosted three conclaves, inviting **15** distinguished industry experts as panellists to share their thoughts in the domains of artificial intelligence, data science, sports management & entrepreneurship, and HR. These conclaves were attended by **over 150** participants across industries. The discussions spanned transforming data into digital strategy, the role of technology in reshaping Indian sports, and future-ready skills in a tech-driven workplace, with insights on AI adoption, sports innovation, talent strategy and leadership in the evolving global economy.

Alumni Engagement

The Institute hosted the second Alumni Meet in September 2025 for the PGP batches of 2022-23, 2023-24 and 2024-25. The heartfelt reunion, rich with nostalgia, camaraderie and thoughtful exchange, brought over 90 alumni back to their alma mater.

Executive Education

Recognising the need for continuous upskilling, the Institute delivered 17 programmes in the areas of AI & Digital Transformation, Strategy & Leadership, Retail Management and Women Leadership. These immersive, expert-led programmes engaged 850+ professionals in multiple batches from leading corporates and healthcare institutions, combining industry-focused curriculum with peer learning and cross-sector networking.

The first edition of the 'AI for Healthcare' executive education programme in October 2025 saw strong response, with 37 participants representing organisations like Echelon Hospitals, Karkinos Healthcare, HUMM, Sir H. N. Reliance Foundation Hospital and more.

Research & Innovation

The Institute advanced impactful, multidisciplinary research in 2025-26 across biomedical sciences, AI and deep learning, materials and semiconductors, and consumer research — addressing key national challenges in healthcare, technology and science. Faculty published widely in leading international journals and conferences, including Nature Microbiology, IEEE and CVF platforms, Biomedical Signal Processing & Control, International Journal of Tourism Research, Advances in Consumer Research and IFLA Journal, reflecting both academic rigour and real-world relevance.

Sports & Athletics

Through its sports development programmes and engagements, the Institute has trained both amateur and professional athletes and sportspersons. In FY 2025-26, the Institute's Sports & Athletics programmes engaged 1,810 participants across community training initiatives, local and corporate sports events, district-level championships, and the Elite Athletes Academy. Spanning U-12 to senior athletes, these initiatives combined regular training, competitive exposure, and structured development pathways to strengthen grassroots participation and high-performance excellence.

Jio University: Academic Plans

Jio University is envisioned as a multidisciplinary education and research university with an initial focus on technology, management and law,

offering programmes such as B.Tech (CSE), Masters in AI & Data Science, integrated LLB, MBA/PGPs, and doctoral and post-doctoral pathways under four founding schools. Over the next five years, it aims to build a student

body of 2,300+ while expanding into Arts and Sciences, Urban Planning, and Medical Science & Public Health to evolve into a comprehensive MERU institution.

Technology as a Strategic Enabler in Higher Education

Jio Institute has positioned technology as a cornerstone of its strategic framework, leveraging it to amplify its impact across the educational landscape. Through sustained and targeted investment in advanced digital infrastructure and platforms, the Institute continues to elevate the quality of teaching-learning experiences, enhance institutional efficiency, and drive superior academic outcomes. This commitment to digital transformation underscores the Institute's dedication to fostering an environment where innovation and academic excellence converge.

Digital Learning Environments

Digitally-enabled classrooms integrate smart technologies, interactive content and collaboration tools to support blended and experiential learning, fostering deeper conceptual understanding and high student engagement.

Institutional Governance and Operations

The Digiicampus Platform streamlines the entire student lifecycle — from academic planning and assessments to attendance and communication — enabling real-time visibility, data-driven decision-making and stronger academic governance.

Career Development and Placement

Superset, the Institute's digital recruitment platform, manages end-to-end placements, supports resume building and facilitates structured engagement with leading employers.

Research and Knowledge Dissemination

The Jio Institute Digital Library provides 24/7 access to over 1.4 million academic resources, empowering rigorous research and continuous learning.

Interdisciplinary Impact and Future Outlook

Digital tools strengthen project-based learning, industry collaboration and applied research, reinforcing the Institute's commitment to delivering scalable, future-ready education.



CASE STUDY

Rudra Shinde's Sprint to Success

Rudra Sachin Shinde's rise from local school competitions to national athletics podiums demonstrates how professional infrastructure and mentorship can transform raw talent into measurable excellence. He began competing in 2016 as a primary school student with natural speed, progressing steadily through district meets before the pandemic temporarily halted his momentum. In 2021, he resumed focused training under national athlete Snehal Patil, leading to his first State

Meet in 2022 and selection to represent Maharashtra at the National Inter-District Junior Athletics Meet.

In early 2024, a disappointing performance in Chhattisgarh followed by a ligament injury threatened to derail his progress. With structured rehabilitation under physiotherapist Dr. Manas Thakur and technical refinement guided by Senior National Coach Shrinivas Gupta, Rudra returned stronger and more disciplined.

The decisive breakthrough came when Jio Institute opened its 400m synthetic track and high-performance facilities

to his club, Feet on Fire, eliminating a daily 25 km commute that had limited his preparation. Training three times a week alongside elite athletes delivered rapid results: a Bronze at the National Junior Athletics Championship (100m, 10.81s), multiple medals at the National School Games and Khelo India Youth Games, and personal bests of 10.60s (100m) and 21.87s (200m).

Now balancing commerce studies with elite sport, Rudra is preparing for the Junior Asian and World Championships — proof that the right ecosystem can unlock national potential.

SPOTLIGHT STORY

JioPC-Jio Institute Partnership: Enabling AI Access on a National Scale

Jio Institute partnered with JioPC to advance a simple but urgent goal: make AI learning accessible to every Indian. As AI becomes central to employability and productivity, inclusion must go beyond basic digital access to meaningful AI literacy.

Focused on learners in smaller towns, first-generation graduates, and school ecosystems without structured capacity to teach emerging technologies, the initiative ensures that geography, income, or prior exposure do not become barriers.

By combining accessible infrastructure with structured learning pathways, the partnership strengthens India's next phase of digital inclusion—equipping learners not just to use AI tools, but to understand and build with them.

Skilling and Employment

Across India, Reliance Foundation's Skilling & Employment programme equips young people for sustained participation in a rapidly evolving labour market. Anchored in an integrated model that aligns industry needs, education systems, and technology-enabled skilling, the programme creates inclusive, future-ready learning pathways. By emphasising continuous learning, employability, and career adaptability, it strengthens workforce resilience while advancing India's human capital in alignment with national development priorities.



16 Lakh+
Youth reached

2.46 Lakh
Youth skilled

93,000+
Youth employed

Key Updates of FY 2025-26

FY 2025-26 marked a year of consolidation and scale for Reliance Foundation's Skilling & Employment programme. Among the updates are the following:

- Programme reached over **16 Lakh+** youth through outreach, training, and employability interventions, including 2.46 Lakh trained via a mix of digital and instructor-led models in technical capabilities and essential life and employability skills
- The efforts enabled more than **93,000+** youth to transition into employment across diverse sectors, underscoring the programme's emphasis on outcomes beyond training completion
- Under the Future Ready Skills Initiative, partnerships with five higher education institutions were complemented by three state-level events and nine educators' workshops, supporting curriculum integration, faculty capacity-building, and industry alignment
- To promote gender inclusion, which remains a core focus, **1.05 Lakh+ women were skilled and 37,000 women** enabled into employment, expanded pathways for first-time women job seekers
- Digital innovation advanced through the Reliance Foundation Skilling Academy ecosystem, preparatory work for a 2026 mobile app launch, and the rollout of structured digital mentorship frameworks
- The programme was recognised with the 'Best Skill Development Initiative of the Year 2025' award at the India CSR Awards, reaffirming Reliance Foundation's commitment to building a resilient, future-ready workforce aligned with national development priorities



CASE STUDIES

From Uncertainty to Independence

Growing in a single-parent household, Sanika Prakash Gharat felt the pressure to earn early, but lacked clarity on how best to navigate interviews, workplace expectations, and career pathways.

Her entry into the 21st Century Skills initiative through the Reliance Foundation Skilling Academy marked a shift. Training in communication, workplace behaviour, and problem-solving, helped her recognise her strengths and build confidence. Peer interactions and placement guidance enabled her to overcome hesitation and act on opportunities.

Soon after completing the programme, Sanika secured employment and began contributing to her family's income — something she had long aspired to do. Today, her daily commute to work not only symbolises mobility but also her stepping into independence as she continues to upskill and build long-term stability for herself and her family.

Learning Beyond the Classroom

Nayan Soni, a 20-year-old pharmacy undergraduate from Indore, developed an early interest in nanoscience while studying drug development but found limited exposure to emerging technologies within the classroom. Determined to build

specialised expertise, he enrolled in the Nanoscience and Technology course offered by Reliance Foundation Skilling Academy. Balancing his college schedule with video-based learning modules during the weekends, Nayan accessed industry-relevant learning without additional cost or travel. The course expanded his understanding

of new pharmaceutical technologies, enhanced his academic profile, and motivated him to pursue further knowledge building in his domain. Inspired by his learning experience, Nayan now encourages fellow students to explore similar skilling opportunities and begin preparing early for their careers.

Promoting Technology and Innovation in Skilling

Digital innovation underpins Reliance Foundation's skilling strategy, enabling scale, inclusion, and long-term workforce relevance. Launched

in September 2024, the Reliance Foundation Skilling Academy has since, addressed barriers of access, affordability, and geography through a digital-first approach. With 100+ open-access, future-ready courses, alongside personalised mentorship and employment linkages, the platform

supports continuous learning and career mobility beyond one-time training. Aligned with the National Education Plan 2020 and the Skill India Digital Hub, the platform integrates learning, guidance, and outcomes to build a more adaptable and resilient workforce.

Celebrating a Milestone

The 21st Century Skills Conclave, held in Mumbai on January 28, 2026, marked a significant milestone in Reliance Foundation's journey – celebrating the achievement of skilling over 3.2 Lakh+ youth and facilitating employment for more than 1.7 Lakh young people across

India. Bringing together policymakers, industry leaders, skilling practitioners and young individuals, the forum focused on building future-ready, job-linked competencies. Discussions underscored the growing importance of human skills such as communication, critical thinking and

collaboration — alongside digital and technology fluency. The discussions reinforced the need for technology-enabled, partnership-driven and person-centric learning pathways to strengthen India's skilling ecosystem.

Other Educational Initiatives

Shahdol

Enhancing Learning Outcomes and Career Readiness for Local Youth

Reliance CBM's CSR initiatives continued to strengthen learning outcomes and career readiness for children and youth across project villages. During the year, 253 meritorious students were felicitated for academic excellence, while 14,176 notebooks were distributed to 5,593 students to support learning continuity. 658 academically weak students benefitted from small-group remedial programmes aimed at strengthening foundational skills.

To support career aspirations, 75 youth received coaching for competitive examinations such as Madhya Pradesh Police and armed

forces recruitment, with 5 clearing the Agniveer written examination and 6 qualifying for the MP Police exam, supported by physical training from RIL security teams. 120 students received computer coaching to build digital skills, while 8 youth completed vocational courses through the Confederation of Indian Industry (CII) in Chhindwara, with 5 securing placements.

Additionally, 100 students from nine villages benefitted from Navodaya entrance coaching, 400+ girls from 21 villages accessed school through bus transportation support, and 18 smart classrooms strengthened learning infrastructure, benefitting nearly 2,500 students.



CASE STUDY

Opportunity Fuels Aspirations

In a modest farming household of four in Shahdol, Madhya Pradesh, where income depended on agriculture and occasional daily wage labour, young Padmini Patel dared to dream of a different future. Despite limited resources and economic challenges, she remained focused on her studies. Today, the 25-year-old holds an MA with 80% marks, having completed her BA with 69% aggregate. She is currently pursuing B.Ed, having secured 72% in her first year. Her next goal is to qualify for NET/JRF so that she can fulfil

her ambition of becoming a college or university lecturer.

A critical enabler in her journey has been Reliance Foundation, whose free bus facility for girls, which ensured safe and regular travel to her college – removing a major barrier to her studies. "I am truly grateful to Reliance Foundation for supporting girls like me through meaningful initiatives like the free bus service. It has made a huge difference in my education journey," says Padmini Patel, who stands today as a beacon of hope for many young girls, proving that sustained support helps turn aspiration into achievement.





CASE STUDIES

Skills that Opened New Horizons

In Kanchanpur village of Shahdol, Siddhartha Singh Baghel and Rohit Pandey stand as inspiring examples of how rural youths can transform their lives through right guidance and skill-based opportunities. After completing their higher secondary education and training at ITI, both men sought a clear pathway to employment and career growth. Reliance Foundation's Youth Skilling Programme proved to be a turning point for them. Following guidance, they enrolled in a specialised

SPCL Supervisor vocational training course conducted at CII Chhindwara, beginning September 1, 2025. Over three months, they gained technical skills alongside learning workplace discipline, safety practices, and supervisory competencies.

Upon successful completion of the training, both got selected as Foreman Trainees with SPCL in Bengaluru at a monthly pay of ₹21,000. Beyond income, the achievement has brought confidence and renewed aspirations. For Siddhartha and Rohit, Reliance Foundation's support became the

bridge between education and employment — turning uncertainty into a future shaped by skill and opportunity.



When Dreams and Duty Converge

In the villages of Semra, Vikrampur, and Dhanpuri, deep in Madhya Pradesh's hinterland, three young men — Rinku Chandra Pal, Prince Namdev, and Shiva Pasi — have scripted a story that has stirred hope and pride across villages. Their recent selection as Agniveers in the Indian Army is not merely a personal milestone but one for their community.

Their journey was shaped by the consistent and coordinated efforts of the Reliance CBM Project, Lalpur, which provides free coaching and structured physical training to rural youth aspiring for defence and security services. Through disciplined preparation, confidence-building, and mentorship, the programme is opening pathways once seen as out of reach.

At a felicitation ceremony attended by Reliance leadership, local

representatives, trainers, and villagers, their success was celebrated as a shared achievement. With 75+ youth already placed across the armed forces, MP Police, and security roles, the initiative reflects how focused skilling and belief can transform rural aspiration into national service.

75+
Rural youth placed in armed forces and security roles



Nagothane

- **Career Guidance & Counselling – Shihu Village:** Career awareness sessions for 10th pass students covered ITI and diploma pathways, admission processes, and interactions with faculty, engaging 27 students and 6 parents to support informed vocational career decisions.
- **Water Conservation Awareness – Zilla Parishad Schools:** A one-day 'Water Fortnight' programme engaged 687 participants (656 students, 31 teachers & staff) through pledges, demonstrations, and practical learning to promote responsible water use and environmental stewardship.
- **On-Job Training (OJT) - ITI Nagothane:** A one-week industrial exposure programme trained 15 ITI students through hands-on workshop practice, tool and systems exposure, safety orientation, and CPR emergency response training, strengthening workplace readiness.
- **Computer Distribution - Digital Education Support:** 18 refurbished, IT-certified computers were provided to 11 Zilla Parishad

schools, enhancing digital literacy and technology-enabled classroom learning for students and teachers.

- **CSR Orientation & Exposure – Kuhire Village:** An experiential learning visit engaged 18 students and 2 faculty from Reliance Foundation School through CSR sessions and field exposure to health, education, and livelihood initiatives, building social awareness and development understanding.

Jhajjar — MET

- **Mission Navodaya Programme:** Designed to prepare government primary school students for Jawahar Navodaya Vidyalaya entrance exams, the initiative operates with village youth facilitators, technical support from the Reliance Foundation and NGOs, teacher capacity building, and JNV exposure visits. In Jhajjar, 37 of 60 rural seats (61.7%) were secured through the RF-MET effort, benefitting 173 students across 12 MET villages over six years.
- **Pratibha Manthan Project:** A district-wide career counselling initiative covering 60+ schools

across Jhajjar and Bahadurgarh, reaching 13,000+ students and 140 teachers through 350+ engagements. The programme provides post-Class 12 pathways, CUET guidance, college admissions support, career exhibitions, and role-model interactions.

- **Education Material Support:** Distribution of over 26,000 notebooks and bags benefitted 5,012 students across 42 government schools in MET catchment areas.
- **STEM Education & Innovation:** Five Mini Science Centres were established, fostering hands-on learning; a student from Mundakhera secured 2nd place at the National STEM Speedy Car Challenge 2025.
- **Bhavishya Jyoti Scholars' Felicitations:** 90 Board exam toppers from 13 schools were recognised, within a larger felicitation event honouring meritorious students, organised by Amar Ujala with MET support.
- **District Teacher Felicitations:** On Teacher's Day, 500 educators across Jhajjar district were honoured for excellence, including achieving 100% Board results.



CASE STUDY

A Dream Realised through Crit

Ritik from Duma village, Gurugram, refused to let setbacks define his dream of joining the Indian Army. Selected as an Army clerk through the Agniveer exam of 2025 on his third and final attempt, his journey reflects resilience shaped by purpose. While pursuing his BBA from Delhi University, Ritik strengthened his preparation through Mission Uday — a Reliance MET-CSR initiative implemented by Captain Zile Singh Academy,

Jhajjar. The programme's integrated coaching model — combining physical training, written exam preparation, and mentorship — helped him overcome earlier near-misses. With focused academic guidance, particularly in English, alongside rigorous physical drills, he successfully cleared both stages of recruitment.

Ritik continues to prepare SSC and Delhi Police exams, while also clearing the exam for the Airforce. The Mission Uday programme has truly become a beacon for aspirants like him, helping them realise their aspirations.



KGD6

- **Reliance Dhirubhai Ambani Quiz 2025:** Conducted by RIL as part of its education initiatives, the quiz engaged 1,960 students from 490 schools across East Godavari, Kakinada, and Dr. B.R. Ambedkar Konaseema districts, with winners awarded laptops, tablets, and bicycles.
- **Reliance Dhirubhai Ambani Protsaham:** RIL supported 200 meritorious, economically disadvantaged Class 10 students with scholarships for junior college admissions in 2025-26.
- **Government School Education Support:** RIL provided educational kits — uniforms, school bags, shoes, and notebooks — to 2,700 students across 14 government schools to strengthen retention and learning continuity.
- **Village Knowledge Centres:** RIL operated village libraries in Gadimoga, Chinavalasala, and Bhyravapalem, recorded 15,600 visits and promoted reading and exam preparedness.

Jamnagar

Education initiatives focused on expanding access to learning opportunities and strengthening student capabilities. Community computer coaching programmes encouraged peer learning, digital skills and scholarship awareness. Education support initiatives also engaged volunteers and students through outreach activities and career awareness sessions. Earlier education programmes supported more than 150 migrant children through Anganwadi learning centres and academic engagement activities.

Expanding Learning Opportunities through Partnerships

Through grants and partnerships, education initiatives reached 4.06 Lakh learners across five states, strengthening both access and quality across multiple stages of

learning. Support ranged from school infrastructure, digital classrooms, scholarships, and transport assistance to the development of advanced laboratories and nursing education programmes.

These interventions helped improve foundational literacy, enhance higher learning environments, and ensure continuity of education for students from underserved communities. Collectively, the initiatives increased student engagement, reduced the risk of dropouts, and supported long-term academic progression—particularly for first-generation learners and students from economically constrained households.

4.06 Lakh

Learners across five states reached through various grants and partnerships

CASE STUDIES

PlanetSkool: Activating Classrooms through Digital Learning

In a remote government school where teacher shortages and lecture-based teaching once limited learning outcomes, digital classrooms introduced through the **PlanetSkool** initiative have transformed the learning experience. With support from Reliance Foundation, interactive smart

classroom systems and digital content were integrated into everyday teaching.

The shift has significantly increased student engagement. Learners now actively participate in discussions, confidently present ideas, and demonstrate stronger conceptual understanding — particularly in Science — while building essential digital skills. Teachers have also observed improved attendance and higher academic performance across classes.

Recorded lessons have become an important learning tool for first-generation learners, enabling them to revisit difficult concepts and even support younger siblings at home. By strengthening digital learning infrastructure, the initiative has helped ensure continuity of education, greater classroom participation, and reduced dropout risks, creating a more inclusive and engaging learning environment.

Strengthening Scientific Talent

With support from Reliance Foundation, **Vimal Research Society** has established advanced molecular biology and biotechnology laboratories, enabling postgraduate students to gain hands-on research experience. The upgraded facilities allow students to move beyond theoretical learning and develop practical laboratory skills essential for scientific careers.

More than 65% of participating students — many of them women — have acquired advanced technical competencies, strengthening their readiness for PhD programmes and research opportunities. Faculty members reported noticeable improvements in analytical thinking, experimental design, and confidence in independent research.

The initiative also fostered collaboration across institutions, expanding research

outputs and positioning the centre as an emerging regional hub for STEM learning. Through the creation of advanced laboratory infrastructure and making it accessible, the programme is helping students — particularly those from rural and economically constrained backgrounds — build pathways into higher research and scientific innovation.

Museum-in-Residence Educational Initiatives in India

In 2025, Qatar Museums (QM) and Reliance Industries developed and launched a five-year strategic partnership between the Nita Mukesh Ambani Cultural Centre (NMACC) and QM. The collaboration will establish a series of Museum-in-Residence educational programmes in India, designed to introduce playful, museum-based learning experiences for children and provide educators with new tools to inspire creativity nationwide.

Connected by a shared belief in the power of education to spark creativity and the importance of cross-cultural exchange, QM and NMACC are jointly developing programmes to enrich early childhood learning. While centred on the

needs of young learners, these initiatives also equip teachers and volunteers with new tools, materials, and playful methodologies that empower them to innovate in the classroom.

In India, NMACC has partnered with Reliance Foundation to support the programming across India by delivering these programmes on the ground and implementing these initiatives across schools, Anganwadis, and community centres, including in rural and underserved regions. These efforts will be supported by QM specialists – including experts from the Dadu, Children's Museum of Qatar – who will deliver masterclasses and hands-on mentoring. In keeping with NMACC's mission to bring the best of the world to India and share the best of India with the world, each programme will be adapted to diverse learning contexts, strengthening the Centre's broader commitment to education and the arts.

Light Atelier is the first programme in this series and it has so far reached over 13,000 children from diverse backgrounds, as well as teachers and Anganwadi educators. The exhibition encourages children aged 4-12 years old to discover the magic of light, shadow, and colour through playful, hands-on exploration.



Disaster Management

Reliance Foundation's Disaster Risk Reduction and Response programme focuses on strengthening community and system-level resilience to disasters and climate change. The programme's integrated approach comprises early warning, preparedness, risk reduction and response to enhance the anticipatory, adaptive, and recovery capacities of vulnerable communities. Through tech-led solutions, community partnerships and gender-responsive approaches, the programme facilitates timely humanitarian assistance while building long-term resilience across high-risk geographies.

UN SDGs



2.08 Crore⁺

Cumulative reach of disaster management initiatives

2.65 Lakh

Farmers and livestock rearers supported with climate-resilient livelihood advisories

¹ This includes response towards Nepal Earthquake on 2015 (i.e. = 41,800)



Highlights of FY 2025-26

- **6 disasters** responded to **2.4 Lakh** people supported **20,000+** animals protected — including complex emergencies such as cholera outbreaks, through multi-layered interventions spanning livestock care (through feed distribution and animal treatment), public health risk management, food security and voucher assistance
- **4.6 Lakh+ individuals** engaged across **6 states** with multi-hazard early warning advisories
- **3,500+ community cadres** trained in disaster preparedness, assessing hazard risk and vulnerability, preparing village development plans for reducing exposure to hazardous risk, mitigating public health risk, school safety, livestock protection and hazard risk assessment
- **92,000+ saplings and mangroves** planted to strengthen nature-based bio-shields
- **11,000+ livestock** treated and safeguarded during emergencies
- **53 schools** covered through mock exercises **7,000+** students engaged through school safety interventions and mock drills
- **6 major emergency responses** coordinated during response to floods in Punjab, Central Maharashtra, Assam and Uttarakhand; the Lumpy Skin Disease outbreak in Gujarat; and an acute diarrhoea outbreak in Odisha

Key Updates of FY 2025-26

The Disaster Management programme engaged over 4.9 Lakh+ individuals across seven climate-vulnerable states through the year. Early warning and anticipatory action systems enabled timely action during heatwaves, cyclones, heavy rainfall, lightning and swell surges. By leveraging predictive risk analysis and multi-channel communication, the programme strengthened last-mile dissemination of advisories. In addition to early warning advisories, individuals also received

advisories related climate resilient livelihood practices.

Capacity Development

Building on these outreach systems, Reliance Foundation reinforced local preparedness capabilities through several capacity development initiatives. Community cadres were trained using standardised technical modules covering search and rescue, first aid, public health risk management, livestock protection, and participatory risk assessment. Gender-responsive readiness was fortified by integrating menstrual hygiene management in emergencies and encouraging the participation of women leaders, ASHA and Anganwadi workers. Collaboration with veterinary services and the establishment of trained response cadres for livestock emergencies further augmented sectoral readiness.

Disaster Preparedness

School safety interventions were implemented across eight states. Training programmes for teachers and School Management Committees supported the development of School Disaster Management Plans, complemented by mock drills conducted in partnership with disaster response agencies to enhance preparedness among students and school staff.

Disaster Risk Reduction

Disaster risk reduction efforts emphasised community-led planning and nature-based solutions. GIS-based risk assessments informed community-led hazard, risk and vulnerability analysis, and the preparation of Village Disaster Management Plans, enabling integration with local development and disaster management frameworks. Reliance Foundation supported government stakeholders in advancing UNESCO-IOC Tsunami Ready Villages by engaging with district administrations in Odisha and Gujarat, helping make communities aware of Tsunami Readiness (Assessment, Preparedness and Response).

Coordination during Operation Sindoor

During Operation Sindoor, the district administration in Kutch invited Reliance Foundation to be part of the closed coordination group working on various preparedness aspects. The Foundation extended its communication platforms to facilitate wider dissemination of critical government messages to the general public. Furthermore, the Foundation supported the civil defence mock exercises in Kutch (Gujarat) and Bhadrak (Odisha) during the operation, while also mobilising blood donation support at a very short interval.

Managing Forest Fire in Odisha

A forest fire risk mitigation initiative was undertaken in Odisha in coordination with the Forest Department and PRADAN. The intervention comprised a mass awareness campaign and capacity-building programme for communities and Vana Suraksha Samiti to strengthen preparedness, response and mitigation measures related to forest fire risk.

Mangrove Protection

Bio-shields and mangrove plantations were scaled across Odisha, West Bengal and Gujarat to reduce exposure to climate and coastal hazards. Women-led plantation drives and conservation efforts in North 24 Parganas boosted local stewardship. Select sites have begun demonstrating natural regeneration and associated ecosystem services.





SPOTLIGHT STORY

Technology-enabled Risk Management

Technology and innovation underpin Reliance Foundation's disaster resilience strategy, enabling a shift from reactive response to anticipatory and risk-informed action. In FY 2025-26, advanced GIS-based hazard mapping, digital elevation models and vulnerability assessments were deployed to identify high-risk areas and simulate disaster scenarios, strengthening planning and preparedness at scale.

These analyses informed community-led hazard, risk and vulnerability assessments and the development of village disaster management plans ensuring that scientific risk insights translated into actionable, locally relevant preparedness measures. Predictive analytics augmented early warning systems, enabling timely dissemination of advisories through mobile platforms, social media and community-based public announcement systems.

Technology-enabled livelihood interventions further bolstered resilience. Through digital farm schools, farmers and livestock rearers connected with scientists and experts, facilitating access to real-time advisories on climate-resilient agriculture, livestock protection, and disease management. This approach contributed to income continuity and safeguarded assets in disaster-prone regions.

Disaster Response

During FY 2025-26, Reliance Foundation implemented several multi-sectoral, comprehensive disaster response initiatives across six states, 15 districts and 370+ villages, reaching 2.4 Lakh people. Interventions were undertaken in response to floods in Punjab, Central Maharashtra, Assam and Uttarakhand; the Lumpy Skin Disease outbreak in Gujarat; and an acute diarrhoea outbreak in Odisha.

Relief efforts addressed critical needs of food security, shelter, livestock protection and public health risk management. Emergency food support reached 82,000+ individuals through dry ration distribution and community kitchens, while voucher assistance was extended to 1,000 of the most vulnerable households to enable access to essential supplies.

To support displaced families, emergency shelter kits were provided to 10,000+ families, helping them set up temporary shelters. Livestock protection measures covered 20,000+ animals through veterinary services and supplementary feeding, with 6.71 Lakh kg of silage and concentrate feed supplied.

Public health risk management interventions supported 21,000+

families with hygiene and sanitation materials, while 58,000+ individuals were reached through public health awareness advisories. Additionally, the restoration of community health centre services improved access to health services for 1 Lakh people, and 24,000+ litres of drinking water were purified and supplied.

Acknowledgement of Disaster Management initiatives

- Reliance Foundation was honoured with the 'Cyclone Montha Fighter' recognition by the Andhra Pradesh Chief Minister, Shri N. Chandrababu Naidu, for its contribution to protecting vulnerable communities. Working closely with the Andhra Pradesh Government, the AP State Disaster Management Authority, the Department of Fisheries, the Department of Agriculture, Indian National Centre for Ocean Information Services (INCOIS) and India Meteorological Department (IMD), the Foundation reached over 7.2 Lakh+ farmers and fisherfolk with timely advisories and early alerts.
- The district administration of Kachchh recognised Reliance Foundation for its significant contribution in disaster management and emergency response. The

felicitation was conferred on Independence Day, in the presence of the District Collector, District Police Chief, Member of Parliament Shri Vinodbhai Chavda, and other MLAs.

- The district administration of Bhadrak acknowledged the Foundation's initiative in a special note submitted to the Odisha State Disaster Management Authority (OSDMA), highlighting the mitigation measures undertaken by the district to reduce lightning-related incidents.
- The District Administration of Bhadrak also appreciated the Foundation for its exemplary environmental mitigation efforts, which included the plantation of palm seeds in eight Gram Panchayats under the Basudevpur, Bhandaripokhari and Dhamnagar blocks. This initiative played a vital role in mitigating lightning and contributed to Disaster Risk Reduction (DRR) by enhancing natural ecosystem barriers and strengthening community resilience.
- The District Administration of Amritsar felicitated Reliance Foundation with a Certificate of Appreciation in recognition of the exemplary service rendered during the Punjab floods.

CASE STUDIES

Sowing the Seeds of Safety

In Akhuapada village of Bhadrak district, seasonal flooding from the Baitarani River is a recurring reality. For Binapani Mangal, these repeated disruptions became a reason to act. Through her engagement with Reliance Foundation's disaster risk reduction initiatives, she has grown into a committed community leader focused on community resilience and environmental protection.

Over the past two years, she has mobilised community members, PRI representatives and youth

volunteers across five Gram Panchayats in Bhandaripokhari block to support palm conservation, an initiative recognised by the OSDMA for its role in reducing lightning risks and strengthening coastal and riverine ecosystems. Her efforts have contributed to the plantation of over 10,000 palm seeds.

Complemented by her participation in the Foundation's climate-resilient livelihood programmes, her journey demonstrates how informed leadership at the grassroots can safeguard communities while restoring nature's protective shield.



Creating Change through Public Health Risk Management Training

In the Palasi block of Araria district, Bihar, access to potable water remains a persistent public health concern. To address this, Reliance Foundation conducted a Public Health Risk Management Training focusing on

hygiene, safe water practices and source disinfection.

Meena Devi, a Sevika from Khutti village of Sohandar Panchayat, participated in this hands-on programme, gaining practical knowledge on identifying public health risks, safe water handling, household-level water treatment and prevention of waterborne diseases.

Following the training, Meena Devi has conducted multiple household visits and small group meetings, regularly demonstrating safe drinking water practices and simple water purification methods. Her continued engagement has encouraged behavioural change, especially among women and children, strengthening public health resilience at the village level.

Hands that Help: Stories of Employee Volunteers in Assam's Flood Response



The Heartbeat Behind the Relief Effort

When floodwaters rose across Assam, the response was defined not only by the scale of relief operations, but by the steady commitment of those who stepped forward to help.

What made these efforts notable was that no one did it for recognition. They did it because it felt right.

Rijuwana Begum, Sales Associate, Reliance Digital, Adab, recalls, "When my team contacted me about volunteering, I had just recovered from an illness. I was still gaining my strength back, but something inside

me said, 'You should do this.' I didn't hesitate. The thought of communities struggling in the floods, families who had lost their homes, children without access to basics—it pushed me forward. I joined the Guwahati DC team and began sorting and packing relief kits. It wasn't always easy physically, but emotionally it was powerful. There's something very humbling about being part of a chain of care that starts with your own two hands. Even as one of the few women volunteers at the site, I never felt alone. I felt proud—proud to stand for something beyond myself, proud to serve."



Punjab Flood Response: Frontline Warriors Restore Health and Hope



The recent floods in Punjab were devastating, leaving communities to grapple with a level of destruction unseen in years. In the critical aftermath, ASHA workers, serving as frontline health warriors, courageously stepped forward to assess the needs of the affected populations and spearhead relief efforts.

Acting as community volunteers along with the Reliance Foundation, these dedicated workers played a pivotal role in safeguarding public health. They reached out to families, raising awareness about personal hygiene and preventive measures, while also ensuring that essential information reached every corner of the impacted villages.

Veena Kaur, an ASHA worker from Amritsar, reflected on the efforts:

“The support from the Reliance Foundation was complete in every sense, from driving public awareness and providing access to clean water to the distribution of hygiene kits.”

Her words underpin the comprehensive nature of the intervention and the powerful impact created due to the collaboration between local health workers and the Foundation’s teams. In the wake of the floods, this partnership between frontline warriors and RF has not only provided relief but also restored hope and resilience across the region.

Restoring Critical Healthcare Access

Prolonged flooding severely affected the Community Health Centre (CHC) in Begowal, which serves 17 Primary Health Centres, disrupting essential healthcare delivery and increasing public health risks. With access compromised and stagnant water accumulating, urgent restoration was required.

Recognising the urgency, the Reliance Foundation (RF) Response Team immediately engaged with the Chief Medical Surgeon and local authorities to prioritise restoration.

In coordination with the Nagar Panchayat and district departments, a rapid assessment was undertaken.

Pumps, water tankers and skilled personnel were deployed to drain floodwater from the facility. Medical equipment was carefully relocated, sun-dried and disinfected to prevent contamination.

Through this coordinated multi-stakeholder effort, over 5.7 Lakh litres of stagnant water were removed from the CHC and surrounding areas. In total, 29.28 Lakh litres of floodwater were drained from the CHC and two affected villages through the public health engineering intervention.

The swift action prevented potential disease outbreaks and enabled the CHC to resume critical healthcare services. For the people of Begowal, the restored facility represents both continuity of care and the value of coordinated emergency response.

29.28 Lakh Litres

Floodwater drained from the CHC and two affected villages

CASE STUDY

Immediate Nutrition Support for the Flood-affected

The devastating floods in Punjab left many families displaced and struggling to access food. Reliance Foundation Team rapidly set up community kitchens to ensure the affected received safe, freshly prepared, nutritious meals. Launched on September 7, 2025, the initiative ensured uninterrupted access to food for five days to 1,500 individuals across two villages (Kot Razada and Bedi Channa), serving 15,000+ meals.

Modelled on traditional langars, these community kitchens also brought

people together, fostering collective resilience amid crises. Beyond alleviating hunger, the kitchens became spaces for emotional support and social connection, restoring dignity and hope to families in distress. Local volunteers cooked and distributed meals, reinforcing a sense of community ownership and compassion.

Residents of Kot Razada expressed profound gratitude for the support provided by Reliance Foundation, noting how the effort inspired the entire village to come together and help run the kitchen.

Omkar Singh, the village Sarpanch, emphasised the life-saving impact of

this timely intervention, sharing that the rapid provision of essential rations and vegetables was a critical support during this challenging period.



Women Empowerment

Reliance Foundation believes that women are central to building a thriving and inclusive society. Its commitment to women’s empowerment is embedded in its mission, which is focused on creating sustainable pathways for their economic and social transformation.

UN SDCs



16.39 Lakh+

Women impacted through programmes focused on women empowerment*

53.76 Lakh+

Women empowered through livelihood and entrepreneurial initiatives across programmes*

* Since Inception



Women Empowerment

Over the past year, initiatives across livelihoods, leadership development, and digital and financial inclusion were guided by the belief that investing in women is investing in India's future. From grassroots communities to national platforms, Reliance Foundation is building resilience, unlocking potential, and widening access to opportunities – enabling women to shape their own destinies, lead with confidence, and drive lasting change within their families, communities and beyond.

Highlights of FY 2025-26

- **10 Lakh+** women entrepreneurs in rural India reached across three states since inception (2.7 Lakh during the current year)
- **25,328** women's collectives (SHGs, Producer Groups, FPCs) strengthened since inception (21,808 this year)
- **13,136** community cadres and women mentors trained for last-mile support since inception (7,104 this year)
- **₹276.12 Crore** leveraged from government and allied agencies since inception (₹144.32 Crore this year)
- **5.05 Lakh** women trained in digital and financial literacy since inception (2.66 Lakh during the current year)
- **95%** fellows strengthened leadership confidence, with 83% confident in influential spaces and high readiness to take on leadership roles
- **95%** fellows demonstrated greater agency, with 83% influencing key decisions and increased initiative in their work
- **81%** fellows applied Fellowship learning, leading to improved leadership practices and organisational strengthening
- Strong ecosystem enablement, with 86% valuing mentorship, 38% citing peer networks as key, and 81% continuing engagement post-programme
- **92%** fellows said the programme met or exceeded their expectations
- **91%** of fellows maintained or further strengthened their confidence as women leaders

7,104

Community cadre, including women, trained for last mile support in FY 2025-26

2.66 Lakh

Women trained in digital and financial literacy during the year

₹ 144.32 Crore

Leveraged from government and allied departments during the year

Key Updates of FY 2025-26

The financial year marked a defining milestone, demonstrating how focused investments in women's leadership, enterprise and enabling ecosystems can translate into measurable scale and lasting impact. The year saw the successful conclusion of the **WomenLeaders India Fellowship Round 2**, which celebrated the achievements of 50 social sector leaders, whose work is already influencing systems at scale. These range from EduFund securing US\$ 6 million in venture capital to JobsForHer signing an MoU with the Government of Jharkhand to create employment opportunities for 5 Lakh women.

Enhancing women's digital access, a major initiative, **'SheConnects Digital Accelerator India'**, was conceptualised and launched as a targeted initiative, designed to respond to women's evolving aspirations with sharper, need-based interventions. This is part of Reliance Foundation's overarching approach to enhancing women's digital agency as a key pathway to empowerment.

For **Swayamshree**, the year marked a phase of consolidation and deepening impact, as the programme strengthened women's economic participation through digital enablement, stronger market integration and closer convergence with government schemes/policies across Gujarat, Madhya Pradesh

and Odisha. Strategic engagements with State Rural Livelihood Missions reinforced the programme's alignment with national priorities such as the 'Lakhpati Didi Yojana', with formal government orders institutionalising cadre training and honorariums, and growing interest from states to replicate proven models across new districts.

The Swayamshree programme has reached 10 Lakh women since the programme began three years ago, reaching this milestone during FY 2025-26. During this period, it has expanded their agency and enterprise potential with the support of vibrant community institutions and women-led collectives. Focused investments in digital tools, financial literacy and market linkages empower women to engage more confidently with markets, financial institutions and government platforms. The programme also contributed to national dialogues on digitisation, Artificial Intelligence in agriculture, and FPO market integration.

Knowledge exchange platforms such as the Swayamshree Conclave 2025 and cross-state learning workshops brought together practitioners, governments and ecosystem partners to co-create scalable models across farm, off-farm and non-farm value chains. Importantly, women's leadership and visibility grew nationally, with women entrepreneurs being recognised at Republic Day celebrations by the Government of India and programme models being showcased on prominent platforms. This underscores Swayamshree's evolution from a livelihoods initiative into a tech-enabled, system-strengthening model advancing women's economic empowerment at scale.

The year also saw the implementation of the Women Entrepreneurship Programme - by Reliance Foundation as a pilot in Madhya Pradesh through NITI Aayog and implemented by Microsave. The initiative is set to be scaled up through learnings from the pilot phase.

CASE STUDIES

Five Lakh Futures, One Digital Bridge

Neelam Pathak, who had been selected as part of the WomenLeaders India Fellowship programme of Reliance Foundation, has become a catalyst in expanding dignified, flexible employment opportunities for women often excluded from the formal workforce. As Co-founder of Rozgar Dhaba, she has pioneered 'Her Jobs' – a platform connecting rural and semi-urban women to digital work opportunities. The Fellowship helped sharpen the pathway to scale, strengthening strategy, partnerships and institutional engagement.

Building on the foundation laid during the WLI programme, Rozgar Dhaba, in a landmark step, signed a Memorandum

of Understanding with the Jharkhand State Livelihood Promotion Society (JSLPS), formalising collaboration with the Government of Jharkhand. The initiative aims to connect **5 Lakh women** to the 'Her Jobs' platform – equipping them with digital infrastructure, skills training and access to remote employment opportunities. By decentralising work and enabling professional engagement from within villages, the model addresses the unique challenges of rural women by bringing professional work-from-home or work-from-anywhere opportunities to the village level, effectively bridging the gap between rural talent and the digital economy.



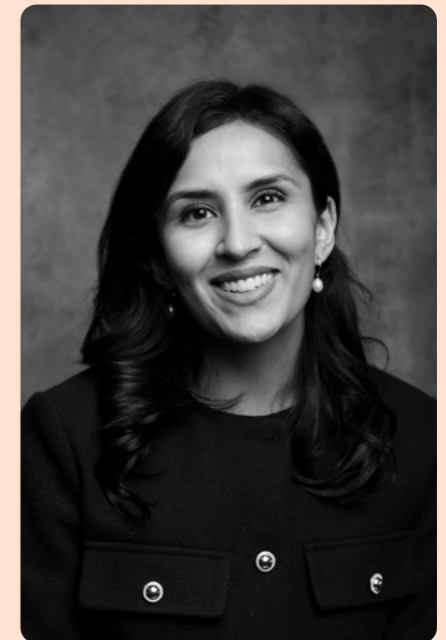
Building Inclusive Pathways to Education

A WomenLeaders India Fellow, Eela Dubey, Co-Founder and CEO of EduFund, represents a new generation of financial leaders who blend market expertise with a strong social purpose. Her interest in sustainable development was shaped at New York University, where exposure to multilateral institutions and grassroots NGOs deepened her understanding of systemic inequities. She began her career on Wall Street at AlphaQuest before returning to India to work with US Freedom Capital, where she identified a critical gap in accessible education financing for Indian families.

Determined to bridge this divide, she founded EduFund, a platform enabling

families to plan, save, and invest for their children's education. Today, EduFund supports over 2,50,000 families, including Anganwadi workers and underserved communities, democratising long-term financial planning for education.

Under her leadership, EduFund has raised over US\$ 12 million from leading global investors, including MassMutual Ventures, Cercano Management, DSP, Kunal Shah, and ViewTrade. Eela is also a published thought leader featured in Forbes Advisor, MoneyControl, and The Economic Times. Eela's vision is to impact over one million families across India, giving them an opportunity to seek brighter futures.



CASE STUDIES

Creating Avenues for Green Livelihoods

In Simori, a forest-fringed village of Betul district, farming families have long depended on middlemen, earning little despite abundant natural resources. For Kavita Bai Dhurve, a smallholder farmer with limited market access, seasonal incomes and delayed payments meant constant financial uncertainty.

That changed when she began participating in the Swayamshree programme, joining self-help groups and livelihood initiatives that expanded her skills and confidence. Today, Kavita is a community agri-entrepreneur and digital market facilitator, connecting

farmers directly to markets. Through digital platforms, she has enabled the sale of over 100 tonnes of maize, ensuring timely, transparent payments and better prices for more than 50 farmers.

A certified Master Trainer in natural farming, Kavita promotes organic and regenerative practices, supports plantations, and helps villagers access government schemes. She has built a diversified livelihood combining farming, poultry, training, and horticulture, making her family's income stable and resilient. More importantly, she has emerged as a local leader, strengthening collective action and green livelihoods in Simori.

By bridging farmers, markets, and public systems, she shows how rural women, when trusted as leaders, can drive inclusive and sustainable development.



Leading Growth from the Ground Up

At 32, Pooja Singh serves as the Board Director of the Ken Betwa Farmer Producer Company Limited and brings to work over eight years of experience as a Village Resource Person. Raised in a farming family, she understands the daily realities of small and marginal farmers – an insight that makes her leadership both empathetic and practical. Over the last two years, under the aegis of Swayamshree programme, Pooja has helped strengthen the FPO's governance, marketing, and business operations.

Under the aegis of the Swayamshree programme, Pooja has played a pivotal role in strengthening the FPO's governance and business operations. She has led market reach efforts and showcased her FPO's products

at national platforms, including flea markets in Navi Mumbai, gaining exposure and building valuable market linkages. Over two years, the FPO's turnover has nearly tripled from ₹76 Lakh to over ₹2 Crore, driven by growth in groundnut oil processing, kernel marketing, mustard oil processing, and input supply.

Pooja's journey is also one of personal empowerment. With improved income, she purchased half an acre of land in her own name – an important marker of economic independence for a rural woman. Widely respected by members, she champions inclusive decision-making and encourages women to take on leadership roles.

Her work shows how education, opportunity, and collective platforms can turn rural women into powerful change-makers.

3x
Growth in turnover of Pooja's FPO over the past two years



sessions and community interactions further strengthened connections, fostering dialogue and shaping perspectives.

10 Lakh+
Registered users of Her Circle

platform for women, available in English and Hindi, with over 10 lakh+ users.

In its fourth year, the platform saw stronger participation and engagement, with deeper conversations translating into meaningful exchanges and opportunities. Curated on-ground

Her Circle

Founded by Chairperson Mrs. Nita M. Ambani, Her Circle is an inclusive movement to bridge the digital gender divide. Since its launch in 2021, it has grown into India's largest digital



Initiatives & Growth StrongHER Movement

In 2025, Mrs. Nita M. Ambani introduced the StrongHER Movement, focusing on self-care, strength and everyday well-being. Through her own fitness routine, she set a simple, consistent example — 30 minutes each day — reflecting discipline, balance and intent.

The movement saw strong community participation, with users taking the fitness pledge and experts contributing through wellness masterclasses. Toolkits, developed with doctors from Sir H. N. Reliance Foundation Hospital, provided credible, accessible information, while yoga and strength training sessions supported user journeys.

Stories added depth — Kavya Sharma shared her recovery and strength training journey post amputation, and Geeta Chauhan, Captain of the Indian Women's Wheelchair Basketball Team, highlighted resilience and discipline. Athletes, including Nishrin Parikh and Ancy Sojan shared routines and insights. StrongHER emerged as a movement centred on action, awareness and self-belief.

Women in Sports

Her Circle spotlighted stories of strength and achievement through a special cover featuring the World Cup-winning Indian Blind Women's Cricket Team. Team members shared their journey, challenges and path to victory.

Voices from leading icons added depth to this narrative. Sania Mirza and Harmanpreet Kaur shared personal journeys shaped by discipline,

perseverance and belief. Champions such as Jyothi Yarraji and Ancy Sojan reflected on the defining moments that shaped their paths. Their journeys, along with those of many others, continue to inspire greater participation, stronger representation, and a growing culture of women in sport.

Masterclasses & Toolkits

Her Circle expanded access to knowledge through curated masterclasses and expert-led toolkits for learning and growth. Financial expert Radhika Gupta, MD & CEO, Edelweiss MF, led a session on savings and investments for women, while Alina Kishnia, CEO, Borzo WeFast, shared insights on entrepreneurship and scaling ventures. Sessions across wellness, diet and health further supported informed living. Each session aimed to enable better decisions, stronger financial awareness, healthier lifestyles, and sustained personal and professional growth.

On-Ground Community Engagement

Her Circle Bizruptors: The second edition of Her Circle Bizruptors, culminating in 2025, reinforced its position as a platform for women-owned businesses, with 2,500+ entries and 1,50,000+ user votes reflecting strong community engagement. The journey led to a grand finale at Jio World Plaza, where participants engaged with founders, industry leaders and women entrepreneurs, fostering dialogue, exchange and learning. The initiative also enabled meaningful connections with venture capitalists, founders and industry experts, with interactions focused on guidance, exposure and business growth.

2,500+

Entries in Her Circle Bizruptors in 2025

Her Circle Mixers: Launched as bi-monthly on-ground activations, Her Circle Mixers brought the community together through shared experiences, enabling direct dialogue with founders, professionals and experts. Through masterclasses, curated discussions and open exchanges, each session fostered learning, connection and participation, strengthening engagement. Beyond the sessions, entrepreneurs collaborated on projects, built visibility and supported each other's growth, with the mixers evolving into a platform for ongoing connections and long-term value creation.

Technology & AI Advancements

Her Circle strengthened its platform through focused, technology-led initiatives to support women entrepreneurs and enhance user experience. Showcase enabled entrepreneurs to present their products and services directly, moving from visibility to opportunity by driving discovery, audience connection and growth. AI-led features, including face recognition and gender-curated content access, delivered a more personalised experience while creating safer spaces through selective conversations and exclusive interactions for women.

Collaborations

Her Circle strengthened its ecosystem through meaningful partnerships aligned with its vision of empowering women across sectors. A collaboration with Swadesh celebrated craftswomen who are masters of their craft, bringing focus to skill, heritage, entrepreneurship. The platform amplified their stories, offering visibility, recognition, appreciation.

Her Circle was the Digital Media Partner for Chhalaang 4.0, supporting and spotlighting women in technology. The partnership highlighted innovation, talent, and the growing presence of women in STEM.

SPOTLIGHT STORY

Role of Technology and Innovation in Women Empowerment

The Technology Integration in Farming (TIF) initiative in Bellaguntha, Ganjam, Odisha demonstrates how locally adapted innovation and technology can reposition women farmers as climate-smart producers and confident decision-makers. Across 30-acre women-led farm clusters, hyper-local climate intelligence, renewable energy solutions, and eco-friendly agronomic practices are integrated into a cohesive system that enhances productivity, resilience and dignity of labour. By shifting agriculture from intuition-based practices to data-enabled planning, the model reduces climate risks, input costs and drudgery while strengthening women's leadership in farm management and resource decisions.

Automatic micro-weather stations, weekly digital agro-advisories, solar irrigation systems, and biological

pest control enable women to plan cropping cycles with precision, diversify into high-value crops and stabilise incomes. Solar technologies reduce dependence on fuel and manual labour, while solar fencing and insect traps improve safety, protect health, and promote safer food production. Biological inputs such as tricho cards and mulching improve soil health, conserve moisture and boost yield across seasons, aligning productivity with ecological sustainability.

Designed for smallholders, the TIF model is low-cost, cluster-based, and inherently scalable. Its women-centric design help build leadership and agency, offering a replicable pathway that aligns technology, climate adaptation and gender equity to advance sustainable livelihoods across rainfed and tribal geographies.

gaining direct market exposure and entrepreneurial confidence

- **660+ women** across various cohorts participated in awareness and empowerment sessions on health, education, and youth development, supported by commemorative observances that strengthened community knowledge and social responsibility.

Jhajjar – MET

- **126 women** trained across 4 cutting and tailoring centres; **5-6 women** per centre (~16-19%) have established their own tailoring shops or boutique-style enterprises, while the rest are engaged in home-based stitching, adding to household income
- **50 women** trained across 2 beauty and wellness centres; **2-4 women** per centre (~7-15%) have launched independent beauty service ventures; others are applying their skills for additional income support

KCD6

- **Skill development support since 2015** has included training to women in dress designing and, creating sustained income-generating opportunities
- **4,100 pairs of school uniforms** stitched by women from Gadimoga and Bhairavapalem gram panchayats under the **School Uniforms Stitching Project**, creating **assured livelihood support** and strengthening local enterprise capacity

Jamnagar

Women empowerment initiatives through Swashray groups continued to create livelihood opportunities. Swashray Enterprises generated sales of over ₹60 Lakh in FY 2025-26, including earnings from handicrafts, food counters, vending machines and tailoring activities.

Women entrepreneurs also undertook large-scale initiatives such as the **Mission Uniform Project**, preparing over 11,000 school uniforms, while another effort saw **about 5,711 uniforms stitched by Swashray women groups**.

Women Empowerment across Locations

Shahdol

Women Empowerment through Skills & Digital Literacy

- **242** women received stitching and handicraft training at village-level centres, enabling opportunities for self-employment and income generation
- **2,002** women were trained through digital and financial literacy programmes, which equipped them with essential skills for financial inclusion and informed decision-making

Nagothane

- **Over 660 women** from villages surrounding the Nagothane

business site were reached through a Women Empowerment & Awareness Programme that delivered information on health, welfare entitlements and government schemes via structured SHG meetings and WhatsApp outreach, strengthening informed decision-making at household and community levels

- **₹16 Lakh+** net profit was generated through a CSR-supported SHG food stall, enabling an SHG member to operate an independent micro-enterprise with steady daily income
- **₹3,000+** net profit was earned by the Shivshambho SHG through papad production and weekly sales, supported by CSR-facilitated market linkages that strengthened financial self-reliance
- **₹35,000+** in sales and **₹16,000+** in total profit generated by **7 SHGs** through food stalls set up during Reliance Foundation Day,



Sports for Development

Sports are a powerful enabler of social change, strengthening both individuals and communities. By expanding access to quality infrastructure, coaching and structured programmes, Reliance Foundation uses sports as a pathway to nurture talent while advancing health, confidence and educational outcomes.

UN SDGs



2.33 crore+

Children and young people across India reached and positively influenced by the programme over the past decade





Through inclusive and well-designed initiatives, children and youth develop essential life skills such as teamwork, discipline and resilience. Sports for Development aims to ensure that every young person, regardless of background, has the opportunity to grow, thrive and build a brighter future — on and off the field.

During FY 2025-26, Reliance Foundation's Sports for Development programme continued to drive meaningful change in the Indian sporting ecosystem – fuelling the aspirations of India's athletes all the way up from the grassroots, celebrating India's national champions through 'United in Triumph', and building purpose-led partnerships anchored in a long-term vision. Reinforcing its athlete-first approach, Reliance Foundation also launched the 'After Care' programme to support graduates of the Reliance Foundation Young Champs Academy beyond their formative training years.

Reliance Foundation was conferred the '**Best Corporate Promoting Sports – High Performance**' award at **FICCI's India Sports Awards November 2025**.

In her acceptance speech, the Reliance Foundation Founder Chairperson, Mrs. Nita M. Ambani, spoke about the importance of continuing to support India's sportspersons in achieving their dreams – "The coming decade will be a golden era for Indian sport! Together with the government, corporates, bodies like FICCI, our young athletes, and their families – we hope to make India a truly global multi-sporting powerhouse!"

This is not only about medals; this is nation-building through sport."

384

257 (National), 127 (International)
Total number of medals won by sportspersons supported by the Foundation in FY 2025-26

127

International medals won by athletes supported by the Foundation

Highlights of FY 2025-26

- **Olympic Values Education Programme** – a first-of-its-kind global initiative – launched by Reliance Foundation in partnership with the International Olympic Committee (IOC), beginning with Anganwadi centres in Madhya Pradesh. Through a play-based approach, the programme introduces children aged 3-5 to the core Olympic values of respect, friendship, and excellence in the formative years of their life.
- **Animesh Kujur** made history as the first Indian man to compete in the men's 200m sprint at the World Athletics Championships, while Gulveer Singh won a remarkable double gold in the 5,000m and 10,000m at the Asian Athletics Championships.
- **Unnati Hooda, Vennala Kalaghotla, Bhavya Chhabra, and Rounak Chouhan** – badminton players supported by Reliance

Foundation – were part of India's bronze medal-winning mixed team at the 2025 World Junior Badminton Championships.

- **Aman Saini** and **Prathamesh Fuge** were part of India's historic gold medal-winning men's compound team at the Asian Archery Championships in South Korea.
- Reliance Foundation-supported athletes dazzled at the Khelo India Winter Games in Gulmarg, Kashmir in February 2026, with TN Bhavani winning one Gold and two Bronze medals, Jiah Aryan winning Bronze in both slalom and giant slalom. Kaamya Karthikeyan also won Gold in ski mountaineering for a total tally of six medals.
- The Foundation's pathway made a strong national impact, with **21** players in India's U-23 AFC Asian Cup Qualifiers squad emerging from the Reliance Foundation Development League (RFDL) – including four graduates of the Reliance Foundation Young Champs (RFYC) academy – and **Mohammed Sanan** becoming the first RFYC alumnus to debut for the senior Indian national team.
- The **Naupang League** (Mizoram) and **Coastal League** (Tamil Nadu) – RFYC grassroots initiatives – crossed a landmark **10,000 matches** in over four seasons combined, reinforcing football's role in community development and youth empowerment.



Key Updates of FY 2025-26

Celebrating India's Sporting Champions

The year 2025 marked a defining year for Indian sports, with women athletes leading a new era of sporting excellence in India, scripting many firsts. Among the biggest triumphs of the year was the Indian women's cricket team lifting the ODI World Cup on home soil and the visually impaired team clinching the inaugural Women's T20 World Cup for the Blind.

The second edition of United in Triumph saw India's three World Cup

winning cricket teams, including the 2024 men's T20 World Cup champions, come together in a grand celebration alongside India's biggest icons, such as Sachin Tendulkar, Mithali Raj, Amitabh Bachchan and Shah Rukh Khan.

Speaking at the event, Mrs. Nita M. Ambani said, "You are not just champions of tournaments. You are champions of hope. Champions of determination. Champions of unity. And champions of a New India. Thank you for giving us those unforgettable memories that all Indians will cherish for a lifetime."



Game-changing Partnerships for Olympics



RF-AMU Collaboration

In line with its goal of forging purposeful partnerships for the betterment of Indian sports, Reliance Foundation joined hands with the Army Marksmanship Unit, Mhow – which has groomed legendary shooters like Col. Rajyavardhan Singh Rathore, Vijay Kumar and Jitu Rai in the past.

The landmark collaboration marks the first-ever corporate partnership for sports development undertaken by the Army. The partnership currently supports 14 shooters training at AMU, including Paris Olympian Sandeep Singh and Subedar Preeti Rajak, the Army's first woman Subedar.

Mrs. Nita M. Ambani, Founder Chairperson, Reliance Foundation, said: "It is an honour for Reliance Foundation to partner with the Indian Army and

the Army Marksmanship Unit (AMU) to strengthen their world-class shooting programme... This collaboration is not just a programme – it is a italicise to see India rise to the very top in sports...".

14

Shooters supported by RF-AMU partnership, including Preeti Rajak, India's first woman Subedar

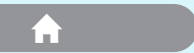
Beyond the Pitch

As part of its 10-year celebration, RFYC formally launched the **Beyond the Pitch**, a structured aftercare programme designed to support scholars as they transition out of the sports academy system. Each year, many young footballers across India face uncertainty when their academic journey ends. This initiative ensures continued guidance through emotional, educational, vocational, and football-specific support, reaffirming RFYC's commitment that no child is left behind.



RF Athletes Make Waves at the National and International Sports Circuit

- 353 athletes across 14 Summer and Winter Olympic sports are now supported by Reliance Foundation; in 2025 alone, RF athletes won 384 medals, 127 of them in international competitions
- In 2025, Reliance Foundation onboarded some of India's best sportspersons by signing archer **Atanu Das**, badminton players **Kidambi Srikanth** and **HS Prannoy**, long jumper **Murali Sreeshankar** and multiple-time Olympian **Deepika Kumari**
- On the track, Reliance Foundation athletes made it to the record book – with **Gulveer Singh** (5,000m and 10,000m), **Animesh Kujur** (100m and 200m), **Mohammed Afsal** (800m) as well as the relay quartet of **Animesh, Gurindervir Singh, Amlan Borgohain, and Manikanta Hoblidhar** (4x100m) setting new national records
- 5 medals, including 3 gold medals, won by RF athletes, who registered their best-ever display at the Asian Athletics Championships 2025; **Gulveer Singh** claimed a double Gold, **Jyothi Yarraji** successfully defended her women's 100m hurdles title



- **Aman Saini** and **Prathamesh Fuge** won India's first ever men's compound team gold at the World Championships in South Korea, following an overseas exposure tour in South Korea, facilitated by the Foundation ahead of the event
- The junior Indian badminton team won a historic bronze at the World Junior Championships in Guwahati, featuring four RF-supported athletes – **Bhavya Chhabra**, **Rounak Chouhan**, **Unnati Hooda**, and **Vennala Kalagotla**

353

Sportspersons supported by Reliance Foundation across 13 Summer and Winter Olympic sports

Olympic Values Education Programme

Since its partnership with the International Olympic Committee (IOC) has taken effect for the Olympic Values Education Programme, Reliance Foundation has partnered with over 300 schools in India and reached almost 3,35,000 students.

The Foundation has utilised innovative methods of engagement like OVEP stories in regional language animation videos to make abstract values like Excellence, Respect and Friendship relatable and easy to grasp for young minds.

The Olympic spirit was on full display as Reliance Foundation marked the International Olympic Day 2025 with a vibrant celebration featuring 1,450 school children and a stellar line-up of Olympians and national champions at Reliance Foundation School in Mumbai.

Joining the celebrations were Olympians (archery) Deepika Kumari and Atanu Das, alongside athletics stars Ancy Sojan, Tejas Shirse, and Sakshi Chavan.

CASE STUDY

Embedding Olympic Values Early

In Madhya Pradesh's Shahdol district, Reliance Foundation introduced its Olympic Values Education Programme (OVEP) for children aged 3-6 years in Anganwadi centres – the first-ever initiative of bringing the Olympic values to early childhood. Designed around play-based, activity-led learning, the initiative nurtures values such as respect, friendship and excellence at a formative stage of their lives.

Through a structured capacity-building approach, 24 Master Trainers were trained, who subsequently enabled 120 Anganwadi workers to deliver engaging sessions 4,000 children using storytelling, movement-based activities and sport-inspired exercises. OVEP kits and technology-enabled digital classrooms further enhanced learning, supporting cognitive, social and emotional development.

By embedding value-based education within early education systems in

rural communities, the initiative demonstrates how sport, innovation, and collaboration can strengthen holistic child development while creating joyful, inclusive learning environments for young children.

4,000

Children engaged through OVEP kits by 120 Anganwadi workers trained by Master Trainers



CASE STUDIES

From Rohtak to the Global Arclights

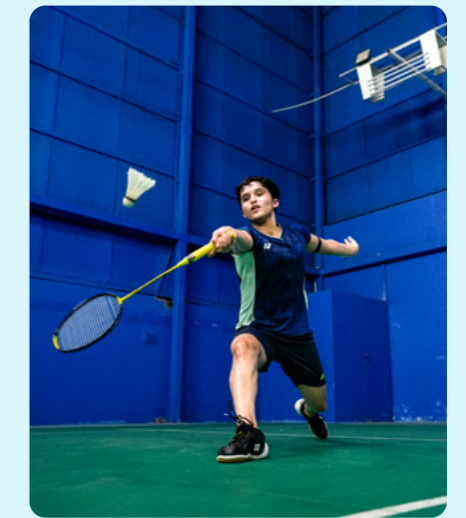
Unnati Hooda, one of India's top badminton players, is seeing a steady upswing in her career journey. Introduced to the sport at the age of seven and coached by her father, Upkar Hooda, at his academy in Rohtak, she has steadily risen through the ranks, achieving a career-best world ranking of 23 in December 2025.

Unnati made history in 2022 by becoming the youngest Indian ever to win a senior Badminton World Federation title, claiming the Odisha Open at just 14. That same year, she was part of India's Uber Cup team that reached the quarterfinals, and in 2023,

she added a second BWF Tour Super 100 title at the Abu Dhabi Masters. Widely seen as a torchbearer of India's badminton legacy after Saina Nehwal and PV Sindhu, she has balanced sporting excellence with academic achievement, scoring 93% in her Class 12 CBSE exams and planning to pursue sports science.

After a six-month injury setback in 2024, Unnati bounced back in style in 2025, supported by the Reliance Foundation and a team of medical experts from the Sir H. N. Reliance Foundation Hospital. Unnati played a key role in India's historic mixed team bronze at the World Junior Championships. She went on to reclaim

the Odisha Masters title for the second time in her career in 2025.



Breaking New Ground: RFYC Graduates Enter Japan's Professional Football Arena

When RFYC graduates Zehal Shibu and Vanlalithazuala Fanai signed professional contracts with FC Tokyo 23's second team, it signalled a landmark moment in the internationalisation of Indian football. For the first time, Indian players formally entered Japan's highly competitive

football ecosystem, reflecting the growing global credibility of RFYC.

Established to build a world-class sports development environment, RFYC combines advanced sports science, structured education, and data-driven performance training to prepare young athletes for elite international games. Regular exposure to top youth tournaments in Japan and across Asia has steadily built trust in Indian talent among global scouts and clubs.

India's entry into Tokyo 23 FC, competing in Japan's Kanto Soccer League, demonstrates the power of sustained, structured long-term development. By opening pathways into technically advanced leagues, RFYC is expanding the global horizon for Indian footballers and strengthening India's position within the evolving Asian football landscape.





CASE STUDY

Animesh Kujur: Breaking Barriers at Full Throttle

In a single electrifying season, Animesh Kujur has rewritten Indian sprinting history. In 2025, he shattered the national records in the 100m, 200m and 4x100m relay – an unprecedented feat. He also became the first Indian male ever to qualify for the short sprint events at the World Championships in Tokyo, competing in the 200m alongside Olympic medallist Kenny Bednarek who praised his talent.

Much like his hero, Usain Bolt, Animesh hails from the rural community. Hailing from Chhattisgarh, he had discipline drilled into him by his Armyman father. Animesh mainly played football in his boarding school, and began competing professionally in athletics in 2021. His rise has been shaped by the mentorship of Martin Owens, Head Coach at the Odisha Reliance Foundation High

Performance Centre in Bhubaneswar, who scouted him and provided him with structured support and world-class facilities.

Animesh won bronze in the 200m event at the Asian Championships and another at the World University Games in 2025 as part of the 4x100m

relay team. He also became the first Indian sprinter to compete in the Diamond League (U23 200m, Monaco) during the year. Already a role model for youngsters in India, he is chasing history again – aiming to be the first Indian to break the 10s and 20s barriers in the 100m and 200m events.



Education and Sports for All

Reliance Foundation's Education and Sports for All (ESA) initiative leverages the transformative power of education and sports to create equitable opportunities for underprivileged and differently abled children across India. Rooted in the belief that every child deserves access to quality learning and holistic development, ESA promotes inclusive growth by strengthening grassroots organisations, enabling innovation, and expanding access to safe and supportive learning environments.

In FY 2025-26, ESA partnered with 17 non-profit organisations through one-year grants, reaching over 55,000 children across 11 states. The programme advances UN Sustainable Development Goals (SDGs) 4 (Quality Education) and 5 (Gender Equality), while driving inclusion, digital equity, and life skills development.

During the year, through diverse partnerships, ESA continued to build pathways for inclusive learning, resilience, and long-term opportunity:

- Educational access and foundational learning for underserved communities were strengthened through partnerships with **Devi Sansthan, NalandaWay Foundation, and One Billion Literates**, delivering Foundational Literacy and Numeracy (FLN) interventions, arts-integrated learning, and English language support in government schools
- Collaboration with **Aarambh** expanded access to STEM education through hands-on laboratory learning experiences
- The **Community Library Project** fostered reading culture and

- youth leadership across low-income communities
- Leadership and life skills initiatives led by **Milaan, Yuwa India Trust, and Anahat for Change Foundation** empowered adolescent girls to continue education and drive community change
- Inclusive education and well-being were advanced through **CanSupport** and disability-focused programmes, supporting children with serious illnesses and developmental challenges
- Grassroots sports initiatives led by **Khel Khel Mein Foundation** and other partners strengthened physical well-being, teamwork, and leadership among children and youth

The ESA Digital Learning Van extended experiential, technology-enabled learning to government schools, strengthening foundational literacy, numeracy, and digital awareness for over 700 children from resource-constrained communities.

Beyond structured interventions, ESA created moments of aspiration at scale. More than 19K children attended IPL matches through the initiative, experiencing world-class sport firsthand. Over 600 students from partner NGOs also participated in a specially curated Hamleys' Wonderland celebration, enjoying a day of performances, activities, and shared celebration. These immersive experiences build confidence, expand horizons, and reinforce a strong sense of belonging and possibility beyond the classroom for young children.

By deepening civil society partnerships and supporting scalable, high-impact models, the programme continues to expand its footprint while maintaining a strong focus on quality and measurable outcomes.

6.7 Lakh

Underprivileged and differently-abled children impacted by ESA since inception

Enabling Talent through Sports Partnerships

Through targeted support under the grants and partnerships programme, two emerging athletes were enabled to access professional training and scholarship opportunities. **Nemha Sarah Kispotta** received support to pursue an **international tennis**

programme, while **Sivananda Shetty** benefitted from **specialised marathon coaching**. These interventions helped strengthen their competitive capabilities while creating pathways for sustained athletic development.



SPOTLIGHT STORY

Training the Mind, Elevating the Game with Technology

Reliance Foundation Young Champs is sharpening performance beyond the grounds by integrating innovation-driven learning into its world-class environment. In a pioneering initiative, it partnered with Be Your Best (BYB Training) in May 2025, a global leader in VR-based cognitive football training, to introduce immersive VR modules into its development framework to enhance the mental sharpness and decision-making abilities of young athletes.

The platform places footballers inside realistic match simulations, strengthening scanning ability, game awareness, and split-second

decision-making, which are critical skills at elite levels. By blending VR technology, the programme strengthens performance outcomes while supporting long-term player growth.

Importantly, the platform provides coaches with data-led insights to track cognitive development and design personalised learning pathways while minimising physical strain. As BYB enters Indian football through this partnership, RFYC reinforces its leadership in youth development, demonstrating how innovation powered by care can unlock smarter, faster next generation of Indian footballers.



CASE STUDY

Learning the Power of Timing

Anaya (name changed), a six-year-old football enthusiast, brings boundless energy to the field. She loves to run fast and kick with full force, but early on she struggled with timing — often losing possession because she rushed to shoot or move without coordinating

with her team. Through ESA's sports programme, her coach introduced a simple lesson: football is not just about speed, but about patience and positioning. Comparing it to waiting for the right moment in hide-and-seek, he helped Anaya understand the value of timing and teamwork.

The change was immediate. In her next game, Anaya played with focus —

passing thoughtfully, waiting for space, and striking at the right moment to score. Her growth culminated at the ESA IPL on September 27, 2025, where she scored a goal and was named Player of the Match. Beyond winning the trophy, Anaya gained confidence, discipline, and the joy of playing as part of a team.

Initiatives across Other Locations

Shahdol

Promoting Sports & Physical Well-being

In FY 2025-26, sports continued to serve as a powerful catalyst for youth engagement and community development across the project villages.

- 14 regional sports events brought together **300+** players, strengthening grassroots participation and physical well-being
- **598** youth received sports kits, enabling greater access to structured play and skill-building opportunities
- **13** football training centres delivered regular coaching to **400+** children, sustaining long-term talent development
- **2** pre-leagues and the three-day 4th Shahdol Junior Football League featured **30 teams**, creating a vibrant competitive platform for emerging young players

These initiatives not only enhance educational access but also foster career growth, women's empowerment, inclusion, and structured pathways to sports development in project villages.

CASE STUDY

Five Girls, One Dream

In a proud moment for Shahdol and Reliance Foundation's grassroots sports initiatives, five players from the Reliance Shahdol Sub-Junior Girls Football Team were selected in Madhya Pradesh team. They went on to play in the National Sub-Junior Girls Football Championship in Jorhat, Assam from August 21-25, 2025.

The journey of the five players – Monika Singh, Gunjan Devi, Divya Sant, Sandhya Sahis, and Chandni Yadav

– began at the State-level Sub-Junior Girls Inter-District Football Tournament held in Mhow (Indore) in July-August, 2025, when the Reliance Shahdol team, participating in the sub-junior girls' category for the first time, reached the finals and narrowly missed the title in a thrilling 3-2 finish. Their skill, determination, and sportsmanship stood out – leading to the selection of five players for the state team and a place at the pre-national coaching camp.

At a felicitation ceremony in Shahdol, district leaders, coaches and community members gathered to celebrate this milestone – a testament to what grassroots investment can achieve. More than a sporting victory, this moment signals a shift. By investing in coaching, facilities and local talent pipelines, the Reliance Football Development Programme is transforming aspiration into achievement – empowering rural girls to compete, lead and inspire the next generation.



CASE STUDY

Building Futures through Football

In Shahdol, football is no longer just a game – it is becoming a pathway to a brighter future. Recognising the popularity of football among local youth and the potential it holds for personal growth and livelihood, Reliance Foundation launched a structured football development programme in collaboration with the All India Football Federation, transforming sport into a vehicle for youth empowerment and community cohesion.

The journey began in March 2023 with a four-day AIFF 'E' Certificate

grassroots coaching course led by national instructor, Fermin D'Souza. Twenty-four local youth received formal training, supported with kits, facilities and physiotherapy, culminating in a vibrant football festival that engaged over 250 children from nearby villages.

Building on this momentum, the same cohort advanced to a six-day AIFF 'D' Licence Coach Development Programme in July 2025 under Master Trainer Shiva Vadaraj. Alongside, 13 grassroots football centres were established, creating structured access for children aged 12-14. The dual-track initiative had clear objectives: to introduce structured football training

to children, build a pool of certified grassroots coaches, encourage physical fitness and healthy competition, and foster life skills such as discipline, teamwork, respect, and inclusion.

Today, Shahdol has 24 certified grassroots coaches – young leaders committed to mentoring the next generation. By strengthening local capacity and nurturing discipline, teamwork and inclusion, Reliance Foundation is embedding a sustainable sports culture – proving that when communities are trained to lead, transformation follows.

Nagothane

Under Sports for Development mandate, the **Lakshya - Youth Physical Fitness & Sports Development Programme** was developed to support young aspirants preparing for defence and uniformed services. Through structured training on school grounds, the programme focused on stamina, endurance, discipline and routine-building aligned with Police, Army and Navy recruitment standards. A total of 174 youth – 142 male and 32 female – participated. The initiative led to improved physical fitness, stronger confidence and enhanced preparedness for competitive physical tests, reinforcing sport as a pathway to discipline, opportunity and self-belief.

174

Youth trained through the Lakshya programme in Nagothane

Jhajjar – MET

- **10-Day Shri Dhirubhai Ambani Cricket Tournament 28 Teams Jhajjar** Organised by METL & RF, the tournament marked Shri Ambani's 93rd birth anniversary, culminating with Dariyapur as champions, Silani as runner-up, and Nimana in third place.
- **₹1,00,000 Felicitation 1 International Medallist** Nisha, Silver Medallist at the World Police Wrestling Games 2025, was honoured for her achievement and exemplary spirit.
- **₹2,55,000 Championship Support 1 International Kickboxing Athlete** A kickboxing athlete, Madhu, received a kickboxing kit and full sponsorship support to compete at the World Seniors Kickboxing Championship, Abu Dhabi.
- **Multi-Sport Equipment Support Wrestling, Powerlifting & Kickboxing** Training kits and equipment were provided to individual athletes and the Kickboxing Academy, Badli.
- **300+ Participants ₹3 Lakh Sponsorship District Badminton Championship** Supported the Jhajjar District Badminton Championship 2025, promoting grassroots badminton.

- **₹2,01,000 Tournament Support 3 Villages** Backed wrestling and cricket tournaments in Sondhi, Ladpur and Dariyapur to encourage traditional sports and youth participation.
- **2 Village Stadiums 1 Basketball Court Traditional Sports Upgrade** Developed stadiums in Sondhi and Nimana, completed a basketball court at Kaloi JNV, and strengthened wrestling facilities at Kheri Jatt.

KCD6

To promote rural sports, Reliance Industries Limited organised the Inter-School Children Sports Fest 2025 at Z.P. High School, Bhairavapalem. The event saw participation from **550 students across 9 schools** in Gadimoga and Bhairavapalem panchayats.

Traditional games including **Kabaddi and Kho-kho** for girls, and **Kabaddi and Volleyball** for boys, were conducted along with cultural competitions. Winners and runners-up were awarded prizes. The initiative was well appreciated by parents and teachers for encouraging fitness, confidence and community spirit among rural children.

Environment and Animal Welfare

The 'We Care' philosophy of Reliance Foundation entails looking out for every living being. Reliance Foundation extends its commitment to animal welfare as an integral part of community resilience and ecological stewardship. Across the country, initiatives strengthen livestock care and management, recognising animals as critical to livelihoods and community stability. From veterinary support to livestock protection during natural disasters, the Foundation ensures that animals are never an afterthought in relief efforts. Combining scientific expertise with grassroots knowledge, the Foundation also advances responsible animal care through Vantara.

UN SDGs



1.5 Lakh

Animals cared for, treated, and provided lifelong support at Vantara

2,000+ species

Vantara is among the most biodiverse wildlife care initiatives globally



Vantara

Central to the Foundation's wildlife conservation efforts is Vantara, its flagship wildlife initiative to rescue, rehabilitate and provide lifelong, species-appropriate care through evidence-based veterinary medicine, and compassionate stewardship, in Jamnagar, Gujarat.

Designed as a long-term, species-appropriate care ecosystem, Vantara vision is to set global benchmarks in wildlife welfare by respecting animal biology, behaviour and dignity – while advancing research, innovation, and sustainable coexistence.

What Sets Vantara Apart

Vantara's scale enables a continuum of care – from emergency rescue to long-term support and conservation breeding programmes. Its specialised facilities include:

- World's largest multi-speciality wildlife hospital
- World's largest elephant hospital
- 22 specialised wildlife hospitals and 17 clinics
- Advanced wildlife imaging centre (CT & MRI)
- Central Sterilisation Services Department (CSSD)
- Central Veterinary & Research Laboratory

3,500 acres

A habitat-sensitive campus built to replicate natural ecosystems

Key Updates of FY 2025-26

During the reporting period, Vantara expanded its conservation footprint through strategic collaborations and advisory engagements:

- MoUs with Jungle Safari, Naya Raipur, Zoological Park Organisation of Thailand and the University of Georgia (USA)
- Advisory role for Telangana's upcoming world-class zoo
- Partnership with the International Big Cat Alliance
- Representation at the Global EEHV Summit 2025, Texas, USA

Research, Knowledge and Publications

In FY 2025-26, Vantara strengthened its role as a national conservation knowledge hub through the following publications:

- Wings of Vantara — field guide documenting **181 bird species**
- Butterflies of GZRRC — ecological records of **41 species**
- Vantara Journal of Zoo and Wildlife Research — advancing scientific discourse
- Indian Zoo Year Book (Vol. X) — coordinated for CZA



Community and Capacity Building

- **Rescue Rangers Mission:** Inspiring children as wildlife ambassadors
- **World Environment Day & Wildlife Week:** Nurturing empathy and co-existence
- Capacity building for forest officers, veterinarians, caregivers, and researchers



Appreciation and Acknowledgement for Leadership in Wildlife Conservation

FY 2025-26 marked a defining year, with national and global institutions recognising Vantara's leadership in ethical, fully compliant, regulation-driven, science-led conservation.

- Recognised by Central Zoo Authority as National Referral Centre (West Zone) under the One Health framework
- Global Humane Conservation Certification by Global Humane Society validating world-class standards through independent assessment
- Membership of international conservation bodies: SEAZA and EARAZA
- Expansion of conservation breeding and rewilding initiatives

These milestones affirm Vantara's position as a global benchmark in compassionate, large-scale wildlife care.

Delivering Care When Life Is Most Fragile

In critically ill cases, Vantara's commitment extends beyond clinical intervention. Multidisciplinary teams focus on comfort and stability, providing animals with supportive care. Veterinarians, caretakers and support teams work together to ease distress and provide steady presence.



STORIES FROM THE FIELD

Rock the Rhinoceros – Innovation in Emergency Care

A severe horn-base infection led to life-threatening neuromuscular complications in one of the rhinoceroses housed at Vantara. Through emergency surgeries, intensive monitoring and an innovative assisted-feeding system, the team demonstrated adaptive veterinary problem-solving under complex conditions.



Tina the Tigress – Space as Medicine

Five young Bengal tigresses rescued from overcrowded facilities were each provided with individual 10-acre territories. How the environment plays a crucial role in healing became evident when Tina – one of the rescued tigers – regained calm, confidence and natural behaviour in the space and privacy Vantara gave this majestic animal.

Lakshmi the Elephant Restoring Mobility and Dignity

Following decades of ritual labour that caused chronic foot damage, Lakshmi received specialised foot care and positive reinforcement training. Structured care at Vantara restored mobility, comfort, autonomy and trust – setting new benchmarks for elephant welfare.

The Road Ahead

Aligned with the UN 2030 Biodiversity Framework, Vantara will continue to advance conservation breeding, AI-enabled wildlife health research, rewilding initiatives and global knowledge exchange. By combining scale, science and compassion, Reliance Foundation – through Vantara – continues to redefine national and global benchmarks wildlife rescue, rehabilitation and conservation.

Animal Welfare Across Locations

Reliance Model Economic Township Ltd. (METL) contributed ₹11 Lakh towards the construction of a new cattle shed at the Farruknagar Gaushala, reinforcing its commitment to humane animal care and strengthening the rural ecosystem. The contribution was formally announced during the Gaushala's Annual Programme

on January 15, 2026. The initiative supports infrastructure enhancement to strengthen shelter capacity, improve hygiene standards, and ensure better protection for cattle during adverse weather conditions. The expanded facility is expected to significantly enhance the gaushala's ability to provide safe, structured, and dignified care for animals.

Other Animal Welfare Initiatives

Across Andhra Pradesh and Maharashtra, Reliance Foundation has supported and partnered with various organisations to deliver improved shelter infrastructure and veterinary care. These efforts strengthened humane care practices while also supporting communities that depend on animal services, contributing to healthier animals and more resilient local livelihoods.

Environment

World Environment Day 2025 – Community-led Environmental Action

- **13 villages** covered by activities conducted on 5 June 2025 to promote environmental awareness, afforestation and sustainable household practices
- **122 individuals** (women, students and volunteers) actively participated in village-level tree plantation drives, cleanliness campaigns and community mobilisation efforts
- **Vegetable seeds** distributed to SHG women under the UMED (MSRLM) initiative to promote kitchen gardening, nutritional self-reliance and organic cultivation practices
- **Cleanliness drives** undertaken across village streets, schools and local water streams, strengthening sanitation and environmental hygiene
- **672 women** reached through digital awareness dissemination and SHG-based environmental discussions, encouraging long-term sustainable behaviour adoption
- **Increased community ownership** of natural resource management and growing interest in household-level green practices across participating villages.

Inspiring Community Stewardship

Through grants and partnerships, environmental initiatives reached 15.88 Lakh+ individuals across Delhi, Maharashtra, Uttar Pradesh, and Rajasthan, supporting efforts such as beach clean-ups, marine litter management, and community awareness. These efforts improved coastal ecosystems and public spaces, directly benefitting fishing communities and daily visitors. Beyond physical clean-ups, programmes fostered civic participation and local stewardship, embedding environmental responsibility within communities while advancing long-term ecological sustainability.

15.88 Lakh+

Individuals reached through environmental initiatives across four states

Barabanki (BMD)

Community Cleanliness Drive

In observance of Gandhi Jayanti and the 11th anniversary of the Swachh Bharat Mission, Reliance organised the Swachhata Hi Seva 2025 campaign



from September 17-October 2 under the theme 'Swabhav Swachhata – Sanskaar Swachhata'. As part of the initiative, a cleanliness drive was conducted on October 1, 2025 near the Washline Gate area.

A total of **89 participants**, including 87 employee volunteers and 2 medical staff, joined the activity, collectively clearing 77.6 kg of waste and promoting awareness on responsible waste management and community sanitation.

Nashik

Waterbody Restoration and Community Space Development

Degraded waterbodies and declining groundwater levels had reduced water availability for agriculture and household use in several parts of Nashik. To address this challenge, Reliance Foundation supported the restoration and ecological revitalisation of a degraded seasonal water body, including the creation of water conservation structures, fisheries development, and a community walkway.

Covering nearly 40 acres, the restored water body improved year-round water availability, reducing dependence on tanker supply and easing water stress for local communities. Farmers were able to cultivate beyond the monsoon season, increasing crop

productivity and stabilising incomes, while fisheries created additional livelihood opportunities. Biodiversity improved and a 1,700-metre walkway transformed the area into a shared community space, demonstrating a scalable model for community-led water resilience.

40 acres

Of degraded water body restored in Nashik

Jamnagar

Environmental sustainability was promoted through a tree plantation initiative at Shapar village, where **more than 1,800 saplings of indigenous varieties** were planted in the first phase with long-term maintenance support to ensure ecological sustainability.

Arts, Culture and Heritage

Reliance Foundation works closely with India's diverse creative ecosystem — spanning traditional artisans, visual artists, and performing arts practitioners among others — to preserve, promote, and sustain the country's rich cultural heritage. Through partnerships and cultural platforms, the Foundation supports livelihoods, nurtures artistic excellence, and enables wider national and global appreciation of India's art forms.

UN SDCs



15,000

Indian artisans across 500 crafts engaged with Swadesh



Celebrating India's Living Craft Traditions



Over the past year, the **Nita Mukesh Ambani Cultural Centre (NMACC)** hosted more than 30 unique artisan engagement pavilions, offering craftspeople a prominent platform to showcase their skills, stories, and heritage to a wide and diverse audience. From the weaving of Banarasis, Chanderis and Kanjivarams, Ajrakh hand-block printing, Kalamkari textiles and wall art and rosewood inlay work to Guttapusalu and Dank Polki jewellery, bronze casting, Thangka painting, Aari and crewel embroidery, and South Indian wood carving, the pavilions demonstrated the depth and diversity of India's craft legacy.

Apart from serving as a tribute to the exceptional skill and dedication of India's artisans, the live demonstrations

and meaningful engagement of the artisans with visitors of all ages, encouraged appreciation, learning, and deeper cultural connection. Beyond visibility, the initiative ensured artisans received fair value and meaningful recognition, thus reinforcing dignity, sustainability, and continued relevance of the traditional crafts of contemporary India.

Strengthening Livelihoods with Dignity

These sustained initiatives by Reliance Foundation and Swadesh – Reliance Retail's premium retail brand dedicated to showcasing and preserving India's traditional arts, crafts, and handloom – have played a vital role in keeping traditional crafts alive as well as providing artisan communities across the country consistent and dignified livelihoods. In FY 2025-26 alone, **Swadesh** purchased goods worth over ₹170 Crore directly from artisans, with quantities exceeding 5.7 Lakh units – creating a tangible economic impact for hundreds of artisan clusters throughout India.

Today, Swadesh works with over 15,000 artisans spanning more than 500 distinct crafts, reinforcing its commitment to scaling with purpose while remaining rooted in authenticity.

Moments of National and Global Recognition

One of the defining highlights of the year was the visit of the Hon'ble Prime Minister of India, Shri Narendra Modi, to artisans' pavilions at NMACC alongside the British Prime Minister, Mr. Keir Starmer, during the latter's India tour in October 2025. It was a moment of immense pride for Reliance Foundation to have facilitated this meaningful cultural exchange.

Reliance Foundation further amplified the strength and vision of artisans supported through Swadesh during the Ahmedabad Shopping Festival, where the brand occupied a prominent and high visibility space. India's Hon'ble Home Minister, Mr. Amit Shah, and his delegation visited the Swadesh installation, spending time engaging with the artisanal collections and craft narratives presented. During the 40-day event, the Swadesh stall witnessed significant footfall of over 1.2 Lakh visitors, who engaged deeply with the stories, heritage, and craftsmanship behind each product.

1.2 Lakh visitors

Footfall at the Swadesh stall during the 40-day Ahmedabad Shopping Festival

Design-led Collaborations Strengthening Traditional Craft Innovation on Tarkashi: A Celebration of Craft, Culture and Community



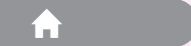
Yogesh Sharma: The Young Torchbearer of Jaipur's Tarkashi Legacy

In Jaipur, long celebrated as a centre of royal craftsmanship, Tarkash remains one of the city's most intricate and revered art forms. Derived from the Hindi words 'taar' meaning 'wire' and 'kashi' meaning 'inlay,' Tarkashi is the delicate art of embedding fine brass wire into wood – an technique used to adorn jewellery boxes, palace doors, lamps and artefacts.

At just 32, Yogesh Kumar Sharma represents the new generation safeguarding this 400-year-old tradition. A trained electrician from ITI, he chose Tarkashi as his professional calling and has since created numerous artefacts showcasing the craft's precision and

elegance. Yogesh was introduced to the craft by his father, Shilp Guru Shri Ramswaroop Sharma, a recipient of the Shilp Guru Award and several national honours. Under his father's mentorship, Yogesh refined not only his technical precision but also his reverence for the craft's cultural depth.

Yogesh's intricately inlaid wooden gun earned him the prestigious State Award (2010) from the Chief Minister of Rajasthan, marking him as a serious custodian of the art. Today, Yogesh balances heritage and innovation, creating works that belong equally in museums and modern homes. Exhibiting at Birla Auditorium in Jaipur and Dilli Haat in New Delhi, he continues to evolve Tarkashi — preserving its discipline while ensuring its contemporary relevance.



Naseem Bhai: Revitalising Tarkashi in Pilkua through Design and Innovation

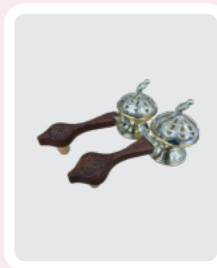
In Uttar Pradesh's Pilkua, woodcraft traditions have been passed down for generations, with artisans working in clusters, practising various techniques of wood carving and brass/metal inlay work. Vine motifs, geometric forms with dots and lines, and intricate patterns crafted by hand define the region's aesthetic vocabulary.

For years, one such artisan unit led by Naseem Bhai operated with only three members, relying on basic hand tools and producing limited number of figures such as elephants and camels. They did not have the market reach or the ability to take on larger or more diverse orders. The focus was mainly on sustaining traditional work with constrained resources, resulting in slow growth opportunities.

The turning point came through partnership with Swadesh. The workshop expanded from three to a team of seven artisans, supported by improved access to tools and small-scale machinery. This strengthened output consistency in quality, enabling the unit to take up larger and more intricate orders, which in turn created additional employment opportunities and strengthened the resilience of the craft and business.

Equally transformative was the design intervention. The product range diversified into contemporary gifting and décor products, aligning traditional craftsmanship with contemporary market needs. Exposure to market design language allowed the artisans to collaborate with design-led brands and retailers, and execute orders across India. Naseem Bhai's unit is today a stronger, more resilient craft enterprise.

Dhoop Dani: Many Hands Reshape a Tradition



More than just a festive artefact, Dhoop Dani is a collaborative expression of India's inclusive craft heritage. Designed to embody the spirit of Diwali through exquisite craftsmanship, evocative scent, and cultural symbolism, the artefact brings together multiple handicraft traditions into a single, cohesive creation. It involves precision wood cutting, intricate brass Tarkashi (inlay work), detailed cross-cut jaali patterns, and hand-casting of decorative elements rooted in indigenous metalworking practices.

Conceived as a cross-cluster initiative spanning Jaipur and Nagina, the project was designed to generate both cultural and economic value. More than 30 artisan families across these regions contributed specialised skills in wood carving and brass inlay, forming the foundation of production. Complementing them, eight families in Delhi crafted the sculptural brass bird elements, while 25

seasoned artisans in Moradabad — renowned for its brass heritage — executed the jaali-cut lids and bowls with structural precision.

To fulfil a large-scale order of 25,000 pieces within 75 days, production processes were carefully coordinated, with polishing, welding, handle execution and final assembly integrated into a streamlined system. A production-friendly machine was introduced to enhance efficiency without diluting handcrafted integrity.

The initiative directly engaged over 100 artisans and indirectly supported more than 500, creating meaningful festive-season livelihoods. Each Dhoop Dani remains distinct — reflecting the hand, skill and individuality of its maker — while collectively demonstrating how collaborative design and coordinated execution can sustain traditional crafts at scale.

CASE STUDIES

Elevating Kantha to Premium Platforms



Alima Khatun (National Awardee 1988, Shilp Guru 2011)

Master artisan Alima Khatun began practising Kantha embroidery at her home in rural Birbhum since the age

of 14, inspired by the artistic legacy of Kala Bhavan at Visva Bharati University, Santiniketan. A national award recipient (1988) and multiple state and district award winner, she spent decades refining a craft rooted in storytelling and intricate hand-stitching. Over the years, she has trained nearly **2,000** under a government scheme and now directly works with **200 women artisans**, indirectly impacting around **1,000 more** — with an overall reach of nearly 4,000 women across rural Bengal.

She was invited to participate in the Kantha Pavilion at NMACC for showcasing her skills. Her month-long demonstration of her unique

embroidery and compositions, including wall panels, has elevated the commercial viability of her work and given her access to Mumbai's premium retail environment, enabling a 40–50% premium in price realisation. Beyond economics, the exposure reshaped aspirations — creating pathways for protégés like Salma Begum and Afruza Khatun, and creating an aspirational career pathway for young women in the Nanoor and Bolpur cluster. The ripple effect thus goes beyond price appreciation to community uplift, reaffirming Kantha not merely as craft, but also a viable economic opportunity for marginalised women artisans.

Forging the Future of Bastar's Dhokra



In the tribal heartland of Bastar, Chhattisgarh, Sushil Sakhuja has spent over three decades practising the ancient Dhokra metal casting

technique. But he realised early on that tradition cannot survive if it refuses to adapt. Recognising the environmental strain caused by traditional furnaces that were needed for the craft, he introduced improved, eco-conscious furnace systems, and encouraged local artisans to come together to build community furnaces — reducing fuel consumption while strengthening the collective resilience of the Ghadwa artisan community. For him, sustainability is not a trend — it is responsibility.

A master sculptor, his works reflect the rhythm of rural life and dignity of tribal identity, yet his impact extends far beyond individual artistry. He has trained more than **500 tribal artisans**,

directly works with **70-100 women and men**, and indirectly supports nearly **500 families**, including through the establishment of a common facility centre in Bastar.

His participation at the Dhokra Pavilion at NMACC, facilitated by Swadesh, gave national visibility to his art. Through live demonstrations, he showed his spellbound audience the intricacies of the craft process. The exposure provided by Swadesh opened the door to fresh ideas, contemporary design perspectives, and direct market access — allowing traditional forms to find a place in modern homes.

Sustaining Creative Ecosystems through Partnerships

Through **partnerships with 30 organisations**, art and culture initiatives reached over 16 Lakh+ people across seven states, supporting artists' livelihoods while expanding community access to creative expression. These programmes enabled artists to sustain their practice and brought

diverse communities closer to cultural experiences.

By promoting inclusion and preserving traditional and contemporary art forms, the initiatives helped strengthen cultural heritage and foster shared spaces for artistic engagement. Collectively, they contributed to stronger

social cohesion while sustaining vibrant creative ecosystems across communities.

16 Lakh+

Individuals benefitted across seven states through various partnerships



Nurturing Emerging Talent

Through its arts and culture initiatives, Reliance is committed to preserving and promoting India's rich artistic heritage while creating opportunities for emerging talent.

Reliance has supported a broad range and variety of Indian regional music and traditional dance forms by supporting artists and performances at the Studio and the Cube at the Nita Mukesh Ambani Culture Centre (NMACC) and other venues across, providing emerging musicians and dancers an important platform to showcase their talent. They not only have the opportunity to present their work in a professional setting, connect with new audiences, but also gain valuable stage experience.

Over the past year, Reliance has supported 600+ dancers and 65 dance performances, and 250+ musicians and 58 performances at NMACC, as well as various arts and cultural events coordinated by other organisations around the country. Major art and cultural heritage exhibitions have also been supported, thus contributing to the growth of the performing arts ecosystem by encouraging the next generation of artists.

600+

Dancers presented their art through 65 dance performances through the year with the support of Reliance

250+

Musicians were supported in performing across 58 musical performances throughout the year



Journey through Sacred Art

Reliance supported 'Bhakti: Krishna's Grace' at the NMACC Art House, with guests treated to over 40 rare artworks and artefacts that spotlighted the rich diversity of devotional expression across painting, sculpture, literature and performance. The exhibition saw more than 12,000+ visitors. With Reliance's support, audiences were

able to encounter cave temples and cosmic myths, handmade offerings and stone-carved wonders, early memories of worship and the astonishing beauty of living traditions. Participative workshops held in conjunction with the exhibition saw more than 200 attendees take part.

Dance Performances

Some of the notable dance performances that Reliance has supported at NMACC include **Maru se Sagar, The Cultural Tapestry of Western India through Folk Forms Journey: From Desert to Sea**, which took audiences on a vibrant cultural voyage across Western India, tracing a path from the golden deserts of Rajasthan to the sunlit shores of Goa. Through a dynamic combination of folk music and dance, the performance celebrated the distinct rhythms, traditions, and communities of four regions. The journey began in Rajasthan with the evocative melodies of the Langa-Manganiar musicians, the swirling grace of Kalbelia, and the breathtaking balance of the Bhavai dance. It continued to Gujarat, where the energetic Kahadiya Nritya and the powerful Afro-Gujarati rhythms of Sidi Dhamal brought tribal traditions to life.

In Maharashtra, audiences were captivated by the expressive storytelling and bold rhythm of Lavani alongside the pastoral devotion and rustic vitality of Dhangari Gaja. The journey concluded in Goa with the gentle elegance of Dekhni and the luminous spectacle of Samai, where dancers balanced glowing lamps in a celebratory finale, leaving the audience enthralled by the rich meeting of land, culture, and sea.

Reliance also supported dancers who participated in **Mrcchakatikam Kuttiyattam** at the Studio Theatre. Natanakairali presented Mrcchakatikam in the classical Kuttiyattam tradition,

offering a richly stylised retelling of the celebrated 5th-century Sanskrit play by Śūdraka. The production followed the story of Chārudatta, a noble yet impoverished Brahmin, and Vasantasenā, a wealthy courtesan, whose love is threatened by the villainous Samsthānaka, and how love and justice prevail in the end.

Through intricate abhinaya, resonant percussion, and elaborate traditional costuming, the performance beautifully brought to life the emotional depth and layered storytelling of Kerala's ancient theatrical heritage. Directed by Guru Venu G, the presentation also commemorated 60 years of Kuttiyattam's institutional journey and celebrated Venu G's 80th birth year. The three-hour performance was met with an enthusiastic response from audiences, highlighting the enduring power and artistry of this classical tradition.

Musical Performances

Some of the notable musical performances that Reliance supported at NMACC include **Dohar Folk: The Musical Roots of Bengal** at the Studio Theatre. Founded in 1999 by the late Kalika Prasad Bhattacharjee, Dohar emerged as a renowned musical ensemble that successfully brought the rich folk traditions of Bengal from rural landscapes to urban and international stages. Presenting genres such as Bhatiyali, Bhawaiya, Baul, Jhumur, and Kirtan, the group blended the music of the soil with a contemporary sensibility while preserving its soulful essence.

Formed in Kolkata by a group of young and energetic artists, Dohar became more than just a band — it grew into a cultural identity and artistic movement dedicated to celebrating and popularising the 'songs of the soil' from Bengal and the North-East. True to its name — 'Dohar', meaning 'chorus' in Bengali — the ensemble carried forward the voices and philosophies of the illustrious Bauls and Fakirs of greater Bengal, reaching thousands through powerful performances while also contributing to the preservation of this rich musical heritage by working towards building an archive of folk tunes and traditions.

In December 2025, Reliance also supported musicians who participated in shows at The Studio & The Cube for the **Marghazi – Carnatic Music festival**. The music festival unfolded across two venues, presenting a vibrant celebration of Carnatic music through four distinguished performances. At the Studio Theatre, audiences were captivated by a powerful vocal recital by Dr. Nithyasree Mahadevan, one of India's most celebrated Carnatic vocalists and playback singers. Carrying forward the formidable legacy of her grandparents, Padma Bhushan D.K. Pattammal and mridangam legend Palghat Mani Iyer, she delivered a performance rich in *bhakti*, technical depth, and emotional intensity. Sharing the stage at the same venue were the renowned Akkarai Sisters — S. Subhalakshmi and S. Sornalatha, whose violin duet enthralled listeners with its seamless synchronisation, lyrical beauty, and expressive interplay, reflecting both deep-rooted tradition and refined artistry.

At The Cube, the festival featured the acclaimed Carnatic vocalist Palghat Ramprasad, whose deeply emotive renditions and uncompromising classicism reflected the depth of the celebrated Palghat musical lineage. His concert, marked by elaborate raga explorations, weighty neravals, and rhythmic precision, resonated strongly with connoisseurs and classical music enthusiasts. The evening also showcased a captivating mandolin recital by Smt. U. Nagamani, a distinguished disciple of the legendary

Mandolin U. Srinivas. Through her technical finesse and soulful interpretation, she demonstrated the remarkable adaptability of the electric mandolin within the Carnatic tradition, bringing forth intricate gamakas and rich melodic expression. Together, these performances across the two venues created a memorable musical experience that celebrated the depth, diversity, and enduring legacy of Indian classical music.

The Folk Aakhyan, Thane

Reliance also supported 'The Folk Aakhyan', a curated showcase of regional music and dance celebrating Maharashtra's rich folk traditions. The performance brought together athletes and community members, creating a platform for cultural exchange alongside sporting activities in Thane. The event provided professional exposure for regional artists while enhancing audience appreciation of folk art forms. By integrating culture with a government-led sporting event, the initiative promoted cultural heritage, strengthened community engagement, and enriched the overall experience for 2,500 attendees.

Odisha Parba 2026

In addition, Reliance supported Odisha Parba 2026, a flagship cultural festival organised by Odia Samaj in New Delhi to celebrate and promote the rich heritage of Odisha. The festival brought together approximately 300 tribal artists, 35 handloom and

handicraft artisans, and 150 traditional cuisine makers to showcase Odisha's music, dance, crafts, and regional cuisine. The three-day event attracted 1,00,000 visitors, including members of the Odia diaspora and the wider Delhi NCR community. By providing a national platform for artists and rural entrepreneurs, the initiative supported cultural preservation while creating livelihood opportunities and strengthening public appreciation for Odisha's diverse artistic traditions.

Karnataka's Dance of Harmony

Reliance also supported the 'Karnataka's Dance of Harmony' programme, organised by Vimove Foundation, which was held on 15 October 2025 at Bharatiya Vidya Bhavan, Race Course Road, Bengaluru, to promote social and cultural awareness through performing arts. The performance featured 13 young dancers, choreographed by Ms. Kavya Avadhani, showcasing the theme of Panchatattva (the five elements of nature – Earth, Water, Fire, Air, and Space) through Karnataka's traditional dance forms such as Yakshagana, Bhootakola, Kolata, Janapada Nritya, and Dollu Kunitha. The event recorded around 200 registrations, including 50 participants from Reliance Foundation (volunteers and scholarship students), 50 participants from Vimove Foundation's Project e-Shaale, and approximately 100 citizens, youth, and students from Bengaluru, reflecting strong community participation.



Other Initiatives

Through volunteering and other community-led initiatives, Reliance Foundation continues to translate its 'We Care' philosophy into collective action. From employee volunteering and environmental stewardship to technology-enabled public service and community engagement, these efforts strengthen local resilience, expand learning opportunities and deepen connections with the communities Reliance serves.

UN SDGs



90,434

Total number of volunteers in FY 2025-26

59.30 Lakh+

People reached*

*Since inception



Volunteering Initiatives

Throughout the year, Reliance employees volunteered across the country to bring the 'We Care' philosophy to life, fostering deeper community connections where we operate and belong. The initiatives were designed under two pillars:

Rooted: Initiatives aimed at building meaningful bonds with neighbourhood schools and community organisations, enabling Reliance employees to share their time and skills.

Mission LiFE (Lifestyle for Environment): Initiatives supporting the Government of India's global movement to encourage individuals and communities to adopt sustainable practices that protect and preserve the environment.

To strengthen the volunteering ecosystem at Reliance, R-Volunteer was launched on International Volunteers Day, providing employees across the country with easy access to both in-person and virtual volunteering opportunities.

Highlights of FY 2025-26

- **90,434** (Employee: 47,575 and Community: 42,859) volunteers contributed **1,00,850+ hours** of volunteering towards Viksit Bharat
- **15 volunteers** from the Reliance Group recognised for their contribution and commitment in the first Volunteer recognition ceremony on **International Volunteers Day**
- **RVolunteer**, an integrated, enterprise-wide Volunteer Management System (VMS), launched to strengthen the volunteering ecosystem

Key Updates of FY 2025-26

Our volunteering strategy was shaped by a deep understanding of community needs, built through years of engagement with schools, old age homes, and underserved neighbourhoods. These insights helped us identify two priority themes:



1. Learning and Future Skills Readiness, and 2. Environmental Stewardship and Community Well-being.

Based on these themes, we designed a year-long, concept-based volunteering calendar that ensured every initiative responded to a real and relevant community gap.

Learning and Future Skills Readiness

Under the Learning and Future Skills Readiness theme, volunteers strengthened children's communication and civic awareness through theatre-based interventions. They used storytelling and art to help children explore aspirations, identify role models, and chart practical pathways to achieve their goals. Hands-on participation in science exhibits and other activities brought everyday science to life, helping students understand the evolution of science across energy, technology, communication, and retail. Volunteers further expanded learning access by supporting students in remote villages through virtual teaching and the creation of digital educational content. Future skills readiness was reinforced through AI awareness activities and mentorship.

Environmental Stewardship and Community Well-being

Environmental stewardship came alive through the creation of sensory and butterfly gardens along with and DIY bird feeders that helped revitalise community green spaces. Community

well-being was strengthened through cleanliness drives promoting public hygiene, support for flood relief efforts in Assam and Punjab, and festive engagements such as Diwali and harvest festival celebrations that connected children with Indian culture while bringing companionship and joy to residents of old age homes.

In **Jamnagar**, community engagement further strengthened social and cultural life. During Navratri, Lahani gifts were distributed to around **5,500 girls participating in Garba across 90 Garbi Mandals in 30 villages** across three talukas of Jamnagar and Junagadh districts. Support was also extended for community gatherings, including food assistance — **810 kg chana dal, 800 kg sugar and 10 containers of cottonseed oil** — for a local Urs event.

Collectively, these initiatives deepened learning, strengthened resilience, expanded aspirations, and fostered stronger connections between employees and the communities they serve.



Kahani Kala Khushi

Kahani Kala Khushi, a flagship employee volunteering initiative, used storytelling, art and interactive learning to strengthen foundational learning and nurture aspirations among children in government schools. Through structured engagement with rural school communities, Reliance volunteers created safe and inspiring spaces where children explored ideas, built confidence and broadened their view of future possibilities.

beyond familiar career paths. Students who earlier limited their ambitions to a few professions began confidently imagining futures as lawyers, journalists and other roles. The transformation was so visible that schoolteachers encouraged the expansion of the programme to additional schools.

attended career awareness workshops that helped them identify aspirations and pathways to achieve them.

Barabanki, Uttar Pradesh

At Indrani Devi Nanhe Prasad Inter College, 16 volunteers engaged with 120 students, delivering similar storytelling and aspiration-building activities that enhanced confidence and career awareness.

Across locations, Kahani Kala Khushi strengthened student confidence, expanded career awareness and demonstrated the potential of volunteer-led learning support in rural schools.

Nagothane, Maharashtra

Sixteen employee volunteers worked across **16 Zilla Parishad schools, reaching 444 students** from Classes 1-7. Younger students participated in value-based storytelling and reading sessions that strengthened literacy and self-expression, while older students

Dhenkanal, Odisha

Volunteers brought the initiative to local schools, where storytelling and creative activities encouraged children to think

Swachhata Hi Seva Campaign 2025

Under the nationwide 'Swachhata Hi Seva' campaign, Reliance volunteers joined hands with local communities to promote cleanliness, public hygiene and shared responsibility for maintaining public spaces. Through employee-led drives across locations, the initiative mobilised communities, strengthened environmental awareness and demonstrated how collective action can transform everyday surroundings.

tug-of-war event, reflecting how collective action can reclaim and reimagine public spaces.

Naroda, Gujarat

At the Naroda Industrial Estate, **around 110 employee volunteers** participated in a coordinated cleanliness drive covering the stretch from the Jio BP Pump to Bank of Baroda (GIDC Phase III). The team collected **approximately 100 kg of waste**, which was disposed of at designated collection points, improving hygiene across the industrial area.

Barabanki, Uttar Pradesh

As part of Gandhi Jayanti and the 11th anniversary of the Swachh Bharat Mission, **89 volunteers**, including medical staff, undertook a clean-up drive near the Washline Gate area. The effort cleared **77.6 kg of waste**, reinforcing the campaign theme 'Swabhav Swachhata – Sanskaar Swachhata' and recognising the contributions of sanitation workers.

Collectively, these efforts strengthened civic awareness, improved public hygiene, and demonstrated the power of volunteer-led environmental action.



Palghar, Maharashtra

At Shirgaon Beach – once considered among the dirtiest in the district – Reliance volunteers mobilised local residents, teachers, and schoolchildren to undertake a large-scale clean-up. The effort evolved into a community movement centred on pride and responsibility. The impact has been so enduring that the beach is now set to host a national-level

Volunteering during disasters: Punjab and Assam

During the Punjab and Assam flood relief operations, Reliance volunteers stepped forward at every stage of the response — from packing essential materials to creating awareness and supporting last-mile distribution. Their timely involvement helped ensure that critical relief reached affected communities when it was needed most.

SPOTLIGHT STORY

Role of Technology and Innovation in Volunteering

The **RVolunteer** platform, an integrated, enterprise-wide Volunteer Management System (VMS), introduced in FY 2025-26, democratises access to volunteering by intelligently filtering and displaying opportunities based on an employee's geographic location while offering a seamless choice between physical and virtual engagements. This ensures every volunteer — regardless of

role, location, or schedule — can participate meaningfully in initiatives aligned with community needs.

RVolunteer streamlines registrations and approvals, reduces manual processes, and provides real-time tracking of volunteer participation through an integrated dashboard and leaderboard. The platform provides clear visibility into the scale and impact of volunteer

contributions while enabling volunteers to track hours, download certificates, connect with peers, and invite colleagues to join activities. By embedding intelligent technology at its core, RVolunteer transitions the volunteering programme to a data-driven, insight-led community engagement, enhancing volunteer experience and amplifying impact at scale.

Puri Rath Yatra 2025: Seva-led Public Service with Discipline and Dignity

During **Puri Rath Yatra 2025**, seva remained at the heart of every intervention, aligned carefully with the 13 sacred ritual days, and delivered with humility, discipline and deep cultural sensitivity. Under the **One Reliance Seva** framework, integrated services were extended across all Police Aid Booths, accommodation centres, major congregation routes and sanitation zones to ensure structured assistance without disrupting sacred proceedings.

The initiative encompassed **Anna Seva**, police booth support, accommodation coordination, strengthening sanitation under the 'Clean Puri' initiative, volunteer mobilisation, rain-ready safety support for duty personnel. Clearly identified Seva points and visible field teams ensured accessible assistance for devotees, frontline staff, and community members, collectively reaching over **11 Lakh people**.

This largescale effort was supported by a robust technology and feedback ecosystem that enabled real-time coordination. **Digital planning dashboards, GIS-based zone mapping, IVRS-supported communication channels, Jio-enabled connectivity**, and **low/no-code monitoring platforms** facilitated

seamless inter-agency coordination across high-footfall zones.

Python-based crowd image analytics helped assess density during peak rituals, enabling proactive volunteer positioning and safety reinforcement. Importantly, **structured digital surveys, IVRS-linked response capture**, and **feedback systems** captured frontline inputs and pilgrim feedback, enabling rapid operational adjustments — refining food distribution flow, sanitation deployment, accommodation assistance, and crowd management measures.

Together, these systems strengthened coordination, transparency, and service delivery throughout **Puri Rath Yatra 2025**.

Awards and Recognitions



Awards for CSR Initiatives – 2025-26

Mrs. Nita M. Ambani received the **Global Peace Honour Award at the Gateway of India, acknowledging her leadership in education, sports, healthcare, arts, and culture.** She paid tribute to India's martyrs and emphasised Reliance Foundation's commitment to inclusive nation-building.



Mrs. Nita M. Ambani, Founder and Chairperson, Reliance Foundation, was conferred with an honorary doctorate by Kalinga Institute of Industrial Technology in recognition of her contributions to philanthropy and social development. The honour acknowledges her leadership in advancing inclusive growth through initiatives that have reached communities across India. Under her guidance, Reliance

Foundation has worked extensively in areas such as rural transformation, education, healthcare, disaster response, and sports development.

- Mrs. Nita M. Ambani, Founder & Chairperson, Reliance Foundation, was conferred the **Best Corporate Promoting Sports – High Performance award** at FICCI's India Sports Awards 2025. In her acceptance speech, Mrs. Ambani spoke about the importance of continuing to support India's sportspersons in achieving their dreams. She said, "The coming decade will be a golden era for Indian sport! Together with the government, corporates, bodies like FICCI, our young athletes, and their families – we hope to make India a truly global multi-sporting powerhouse! This is not only about medals, this is nation-building through sport."



- Mr. Anant Ambani became the **youngest and first Asian to receive the Global Humanitarian**

Award for 2025, presented by the Global Humane Society. His dedication and unwavering commitment to wildlife have shaped a lifelong mission rooted in compassion and care. His childhood dream of building a modern-day Noah's Ark and protecting endangered species reflects his belief in setting a new global standard for wildlife welfare. He continues to work toward a future where India leads the world in wildlife care and compassionate stewardship.

- Best Skill Development Initiative – Reliance Foundation Skilling and Employment received the Indian CSR Award 2025 for the 'Best Skill Development Initiative'**, recognising our efforts to empower India's youth.
- Reliance Foundation was honoured with an appreciation certificate and felicitated by the **Hon'ble Chief Minister of Andhra Pradesh, Shri N. Chandrababu Naidu**, for exemplary contribution in mitigating the impact of **Cyclone 'Montha'** by providing early warning to the fishing and farming communities.
- Reliance Foundation's **Rural Transformation programme** was recognised at the **19th CII National Awards for Excellence in Water Management 2025** for its project in Patan, Gujarat, identified as a Noteworthy Project in Water Management under the **'Beyond the Fence'** category.
- Reliance Foundation won **eight awards for communication efforts** through the year including an International – **Innovation SABRE Awards South Asia 2025**; others included the **ET BrandEquity Trendies Awards**, DoGood Awards, etc. for powerful storytelling with 360-degree video, presenting of disaster response efforts and capturing ground stories.

Awards for Dhirubhai Ambani International School (DAIS) and Nita Mukesh Ambani Junior School (NMAJS)

- 2 FTC Robotics teams** of Dhirubhai Ambani International School (DAIS) qualified for World Championships, with Team Matrix emerging as World Champions
- Engineering Inspiration Award** received by the FRC team of DAIS, recognising excellence in engineering design and innovation
- Ranked among **Top IB Schools globally**
- #1 International School in India** (EducationWorld)
- Microsoft Showcase School** (4 consecutive years)
- #1 Preschool in India** (EducationWorld) for NMAJS



Awards for Reliance Foundation Schools



School Rankings

- In the Cfore survey rankings 2025, KDARFS Jamnagar (India #56, City #1) and RFS Koparkhairane (India #59, Navi Mumbai #2) were

- recognised among the **Top 100 Indian Curriculum Day Co-Ed Schools** nationally
- KDARFS Jamnagar achieved #1 ranking nationally in the category of Great Schools to Teach and Learn at the **EducationWorld Grand Jury Awards 2025**
- Economic Times TechEDU India Awards 2025:** Notable national recognition for Outstanding NEP/ NCF alignment (Jamnagar - Bronze), Tech-Enhanced STEAM (Koparkhairane - Silver), and Excellence in Blended Education (Vadodara - Silver)
- EducationWorld India School Rankings 2025-26:** Three Reliance Foundation Schools achieved national distinction in

- the Co-Ed Day category: RFS Koparkhairane (Top 50 India, Maharashtra #6), KDARFS Jamnagar (Top 100 India, Gujarat #13), and RFS Surat (Top 150 India, Gujarat #24)
- Economic Times Education Excellence Awards 2025:** RFS Koparkhairane was awarded the Silver Medal for 'Excellence in Teacher Training & Professional Development' and the Bronze Medal for 'Excellence in School Management Software Integration'
- RFS Lodhivali (EM) earned the Silver Medal for its 'Mental Health & Well-being Programmes', while RFS Lodhivali (MM) received the Silver Medal for 'Excellence in ICT Integration in Education'



-  /RelianceIndustriesLimited
-  /relianceupdates
-  /RIL_Updates
-  /company/reliance
-  /@RelianceUpdates


Reliance
Industries Limited
Growth is Life

BSE. 500325
NSE. RELIANCE
BLOOMBERG. RELIANCE : IN
CIN. L17110MH1973PLC019786

Registered Office: 3rd Floor, Maker Chambers IV, 222, Nariman Point, Mumbai - 400 021
Tel: +91 22 3555 5000, Fax: +91 22 2204 2268, E-mail: investor.relations@ril.com, Website: www.ril.com