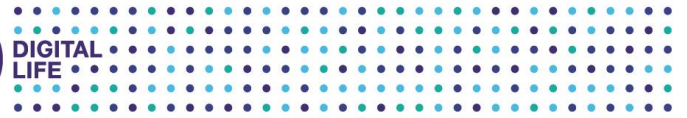


DIGITAL  
LIFE



March 18, 2020

**BSE Limited**

Phiroze Jeejeebhoy Towers  
Dalal Street  
Mumbai 400001

**National Stock Exchange of India Limited**

Exchange Plaza, C/1, G Block  
Bandra – Kurla Complex, Bandra (East)  
Mumbai 400051

**Ref: Details of Listed Securities provided in Annexure A**

**Sub: Approval of the Scheme of Arrangement amongst Reliance Jio Infocomm Limited and certain classes of its creditors (the “Scheme”)**

---

Dear Sirs,

Further to our earlier intimations on the subject, we would like to inform that the Hon'ble National Company Law Tribunal, Ahmedabad Bench, vide its Order dated March 13, 2020 has approved the Scheme, for transfer of certain identified liabilities ('Identified Liabilities') to Reliance Industries Limited and the subject order is available on the website of National Company Law Tribunal (link: [https://nclt.gov.in/sites/default/files/Feb-final-orders-pdf/Scan\\_20200317\\_1.pdf](https://nclt.gov.in/sites/default/files/Feb-final-orders-pdf/Scan_20200317_1.pdf)).

Accordingly, the Identified Liabilities of the Company stand transferred to Reliance Industries Limited.

The above may please be taken on record.

Thanking you,

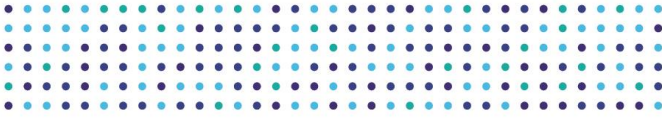
Yours truly,

**For Reliance Jio Infocomm Limited**

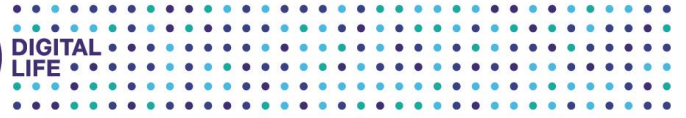
  
**Jyoti Jain**  
**Company Secretary**



Encl.: As above



DIGITAL  
LIFE



## Annexure A: Details of Listed Securities

### Issue Description / Description of Security:

#### NSE

PPD1	: Infotel Broadband Ser. 8.95% 2020 (PPD-1)
PPD2	: Infotel Broadband Ser. 8.95% 2020 (PPD-2)
PPD3	: Reliance Jio Info 9.25% 2024 (PPD-3)
PPD5	: Reliance Jio Info 9.00% 2025 (PPD-5)
(Option 2)	
PPD8	: Reliance Jio Info 8.25% 2025 (PPD-8)
PPD11	: Reliance Jio Info 8.32% 2021 (Series - PPD-11)
PPD12	: Reliance Jio 8% 2023 PPD12
PPD13	: Reliance Jio Info 8% 2023 (PPD13)
PPD14	: Reliance Jio Info 7.97% 2022 Sr- PPD14
PPD15	: Reliance Jio Info 8.70% 2021 Sr-PPD15
PPD16	: Reliance Jio Info 8.70% 2021 (PPD16)

### Scrip code:

#### BSE

PPD1	: 946839
PPD2	: 946866
PPD3	: 950380
PPD5	: 951556
(Option 2)	
PPD8	: 952917
PPD11	: 954293
PPD12	: 957846
PPD13	: 957862
PPD14	: 957904
PPD15	: 957992
PPD16	: 958110

